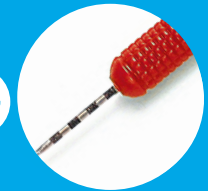


# UNODENT

Dental Collection 2021



# Our products

Helping you create beautiful smiles for over 45 years.






UnoDent has been at the heart of DD for many years. Our range of products has been developed over time by listening to our customers, to suit the needs of dentists and practices up and down the country.

Discover for yourself the innovation and quality that the range can offer with the UnoDent Dental Collection 2020.

Each section of our collection has been designed around dental procedures, making it even easier to locate exactly what you need.



# What's Inside?

	Needles & Syringes	4		Oral Hygiene & Prevention	42		Endodontics	106		Surgical	142
	Infection Control & Consumables	8		Burs	56		Posts & Cores	118		Orthodontics	146
	Examination	24		Restoratives	78		Impression	120		Laboratory Supplies	164
	Needle Holders & Scissors	34		Matrix	100		Crown, Bridge & Veneers	126			
	X-Ray	38		Polishing	102		Extraction	134			



# Needles & Syringes

[Click the product codes to view more information](#)

## Needles

### Sterile Dental Needles

Our Sterile Dental Needles are sterilised using ethylene oxide and individually packed in tamper-evident tubes. The needles feature a tri-bevel point for easy tissue penetration, a high tech non-toxic, pyrogenic free tube and round cutting edge to help protect the gums.



#### Sterile Anaesthetic Dental Needles

27GL (0.4 x 32mm).

Box 100.

ANU040



#### Sterile Anaesthetic Dental Needles

30GL (0.3 x 25mm).

Box 100.

ANU060



#### Sterile Anaesthetic Dental Needles

27GS (0.4 x 21mm).

Box 100.

ANU045



#### Sterile Anaesthetic Dental Needles

30GS (0.3 x 21mm).

Box 100.

ANU030, ANU050

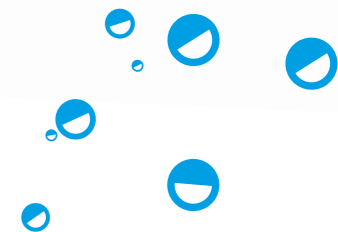


#### Sterile Anaesthetic Dental Needles

30GUS (0.3 x 12mm).

Box 100.

ANU055



# Syringes

## Metal Syringes



**Intraligamental Infiltration - Sopira Citoject**  
1.8ml. Each.  
ASU016



**Aspirating Cartridge Syringe - Breech Loading**  
1.8ml or 2.2ml.  
For use with Standard Cartridges. Each.  
ASP199, ASP200



**Self-Aspirating Cartridge Syringe - Astra**  
2.2ml. For use with Dentsply Sirona Self Aspirating Cartridges only. Each.  
ASP220



**Self-Aspirating Cartridge Syringe - Universal Side Loading**  
2.2ml. For use with Standard Cartridges. Each.  
ASR050



**Intraligamental Infiltration - Paroject Syringe** 1.8ml or 2.2ml.  
ASU018, ASU019



**Aspirating Cartridge Syringe - Side Loading**  
1.8ml or 2.2ml.  
For use with Standard Cartridges. Each.  
ASP209, ASP210



**Self-Aspirating Cartridge Syringe - Breech Loading**  
2.2ml. All Stainless Steel. For use with Dentsply Sirona Self Aspirating Cartridges only. Each.  
ASP221



**Cartridge Syringe - Breech Loading**  
1.8ml or 2.2ml.  
For use with Standard Cartridges Each.  
ASB109, ASB110, ASB115, ASB111



## Disposable Syringes



**Sterile Disposable Syringes**  
2ml or 5ml. Without Needles. Individually sterile-packed. Box 100.  
SYU002, SYU005



**Sterile Luer Lock Syringes**  
2ml, 3ml or 5ml. Disposable. Without needle. Box 100.  
SYU202, SYU203, SYU205

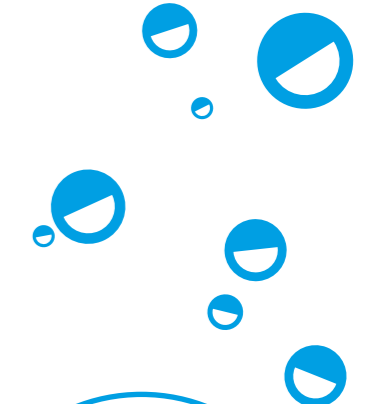
## Syringe Accessories



**Anti-Needle Stick Device**  
Jenker Type. Autoclavable. Each.  
DNE150



**Sharps Box**  
0.35L Capacity. Oval Base 4 x 8.5cm, Lid 5 x 12.5cm, Height 16cm. Pack 5.  
ANW301



## Why you love UnoDent

"I like the fact that the standard is comparable to the branded products and the quality is the same or better."

Saima Rennie,  
Principal Dentist



# Infection Control & Consumables

[Click the product codes to view more information](#)

Due to Covid 19, Infection control & consumables stock availability changes on a daily basis. Alternative products may be suggested on the occasion that something isn't available. Please log into your DD account for current stock levels.

## Wipes



### Surface Disinfectant Wipes - Small

Alcohol-based. Lemon. 185 x 125mm. Effective against bacteria and viruses including: MRSA and Coronavirus. 100 Wipe Tub or Refill. CAW570, CAW575



### Surface Disinfectant Wipes - Large

Alcohol-based. Lemon. 200 x 200mm. Effective against bacteria and viruses including: MRSA and Coronavirus. 200 Wipe Tub or Refill. CAW580, CAW585



### UnoWipes Disinfectant Wipes

Alcohol-based. 200 x 200mm. Effective against bacteria and viruses including: MRSA and Coronavirus. 200 Wipe Tub or Refill. CAW565, CAW566



### Surface Disinfectant Wipes - Alcohol-free

Mint. 200 x 200mm. Effective against bacteria and viruses including: MRSA and Hepatitis B. 200 Wipe Tub or Refill. CAW590, CAW595



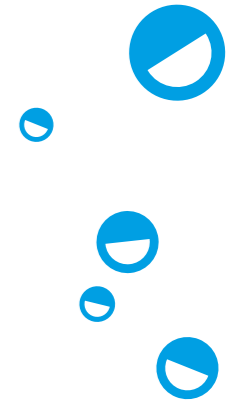
### pH Multi Surface Wipe

Contains no alcohol or disinfectant. 280 x 250mm. 255 Wipe Tub or 3 x 225 Wipe Refill Pack. CAW650, CAW655



### Lint Free Drying Cloths

30cm x 37cm. 60% viscose and 40% polyester. Box 400. CAW005



## Why you love UnoDent

"Their hygiene products are considerably more cost effective especially in this current covid climate where expenditure of running a dental practice has substantially increased."

Mr Piyush Patel,  
BDS MFDSRCP(S)(Glas)

# Disinfectant



## Surface Disinfectant Spray

Alcohol based. Lemon. Effective against enveloped viruses. 500ml or 5L. GSC300, GSC305



## Surface Disinfectant Spray - Alcohol-Free

Mint. Effective against bacteria and viruses including MRSA. 500ml or 5L. GSC320, GSC322



## Rotary Instrument Disinfectant

Ready-to-use disinfectant for rotating instruments. Aldehyde and phenol free. 2L. GEC000



## Instrument Cleanser/Disinfectant

For instruments, burs and endodontic instruments.. Aldehyde and phenol-free. 2L. GIC200



## Disinfection Bath

3 Litre capacity. 3 piece bath set: tray, lid and basket. 26 x 18 x 12.5cm. GXU005



## Aspisept Daily

Aspirator Cleanser/ disinfector. Makes 100L of solution. 2L. GMU015



## AutoRinse Daily Aspirator Cleaner

Aldehyde free. Effective against bacteria and viruses including E. coli. Makes 100L of solution. 2L. GMC100



## Impression Disinfectant Powder

Effective against bacteria and viruses including Hepatitis C. Makes 35L of working solution. 700g. GJC100



## Suspension Foam Spray

Ready-to-use. Keeps dirty/soiled dental instruments moist prior to disinfection and decontamination 500ml. GIC000



## Unosept Surface Disinfectant

Ready-to-use. Effective against bacteria and viruses including MRSA. 5L with key. GSU030



## Antibacterial Floor Cleaner

Suitable for tiles, composite and other synthetic flooring. Makes 250L of solution. 5L. GSC315



## Rotary Instrument Cleanser

Ready-to-use. Suitable for use with or without the aid of ultrasonics. 2L. GEU010



## Surgical Instrument Cleanser/Disinfectant

Instrument pre-soak and high level disinfectant. Aldehyde-free. 2L. GIU010



## Dental Unit Water Cleaner

Concentrate. For routine decontamination of the dental pressurised water lines. Makes 100L of solution. 2L Bottle. GIC300



## Aspisept Weekly

Aspirator Cleanser. Makes 100L of solution. 2L. GMU020



## AutoRinse Weekly

Aspirator Cleanser. Acid based. Makes 100L of solution. 2L. GMC105



## pH Neutral Detergent

Lemon. Low level detergent. Alcohol-free. 500ml. GSC325



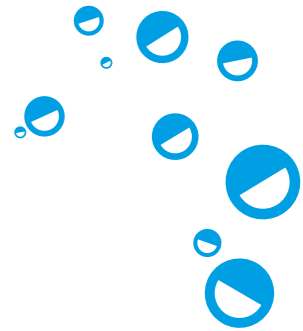
## Hand Disinfectant Gel

Pink. Suitable for frequent use. Effective against enveloped viruses. 250ml, 500ml or 5L. GHU125, GHC052, GHU130



## Enzymatic Ultrasonic Cleaner

For pre-cleaning of medical devices 5L makes 166L. 1L or 5L bottle. GUC000, GUC005



# Aspirators



## Disposable Aspirator Tubes

135 x 11mm. White, Blue, Green or Orange. 45/45 degree ends. Polyethylene. Pack 100.

CJU000 - CJU003



## Disposable Angle for Aspirator Tubes

For Disposable Aspirator tubes: CJU000, CJU001, CJU002 and CJU003. Latex free. Pack 100.

CJU020



## Disposable Aspirator Tips - 16mm

White or Yellow. Child or Adult. Latex free. Fibreglass free. Pack 50.

CJT060, CJT062, CJT063



## Disposable Aspirator Tubes - Vented

'S' shape end. White, Blue or Green. Single rectangular ventilation at one end. Pack 100.

CJU010 - CJU012



## Disposable Aspirator Tips

Autoclavable. Polypropylene. Suitable when treating children. Latex free. Pack 25.

CJU030



## Disposable Aspirator Tips - 16mm Adult

Blue. Pack 50.

CJT064



## Disposable Saliva Ejectors - Plastic

Flexible clear plastic. 13 cm or 15cm. Bag 100.

CJE410, CJE420



## Disposable Multi-Colour 3-in-1 Tips

4 air core design. Assorted colours. To fit American style syringes. Pack 250.

CJT290



## Disposable 16mm Adaptor

To connect aspirator tip & tubing. White. Bag 50.

CJT030



## Autoclavable Aspirator Tips - Adult 11mm

Grey. Bag 10.

CJT000



## Autoclavable Aspirator - Adult 11mm - Surgical

White. Autoclavable to 134°C. Bag 25.

CJT901



## Disposable 3-Way Tips

For triple syringe with easy snap on adaptor fittings. White. Pack 200.

CJT860



## Disposable 11mm Adaptor

To connect aspirator tip & tubing. White. Bag 50.

CJT035



## Autoclavable Aspirator Tip 16mm

Yellow, Pink, Blue, Orange, Lime Green or Grey. Bag 10.

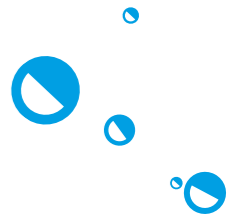
CJT001 - CJT005, CJT115



## Autoclavable Aspirator 11mm Child

Grey. Bag 5.

CJT912



# Dispensers



**Bib Dispenser - Springloaded with Lid**  
For COD300-302.  
175 x 130 x 170mm. Each.  
CAU010



**Bib Dispenser - Short**  
For use with COD300-302.  
177 x 129 x 263mm. Each.  
CAU110



**Bib Dispenser - Medium**  
205 x 210 x 195mm. Each.  
CAU122



**Bib Dispenser - Tall**  
For COP015.  
204 x 100 x 387mm. Each.  
CAU112



**Flat Pack Apron Dispenser - Large**  
650 x 365 x 20mm. Each.  
CAU123



**Glove Box Dispenser - Single**  
For most standard size glove boxes.  
254 x 86 x 128mm. Each.  
CAU100



**Glove Box Dispenser - Double**  
For most standard size glove boxes.  
254 x 86 x 250mm. Each.  
CAU101



**Glove Dispenser**  
White, Plastic. For use with most standard size glove boxes. 270 x 100 x 140mm. Each.  
CGX010



**Bib Dispenser - with Lid**  
For COD300-302.  
185 x 130 x 170mm. Each.  
White CAU030  
Blue CAU032  
Transparent CAU034  
Blue Transparent CAU036  
Smokey Transparent CAU038



**Bib Dispenser - 10" Roll**  
For COP100,101 & 102.  
290 x 135 x 141mm. Each.  
CAU113



**Bib Dispenser - 11" Roll**  
For 11" bib rolls.  
315 x 135 x 141mm. Each.  
CAU120



**Bib Dispenser - Roll**  
For COP100-102.  
280 x 125 x 136mm. Each.  
COP110



**Apron Dispenser for Flat Pack Aprons**  
For COD010.  
440 x 32 x 448mm. Each.  
CAU121



**Glove Box Dispenser - Triple**  
For most standard size glove boxes. 254 x 86 x 370mm. Each.  
CAU102



**Glove Box Dispenser - Quad**  
For most standard size glove boxes.  
254 x 86 x 490mm. Each.  
CAU103



**Single Glove Box & Apron Dispenser**  
For use with most standard size glove boxes and 10" apron rolls. Each.  
CAU104





# Dispensers



## Face Mask Dispenser - Tie-on Masks

For use with CHC021, CHU015, CHU016 and CHU017. 193 x 110 x 110mm. Each. CAU106



## Face Mask Dispenser - Ear Loop Masks

For CHU018, CHU019 and CHU020. 193 x 110 x 80mm. Each. CAU105



**Facial Tissue Dispenser**  
For CAD050. Each. CAF015



**Cotton Pellet Dispenser**  
White. Autoclavable. Dispenser with spring. 4 x 4 x 5cm. Each. CCC525



**Cotton Wool Roll Dispenser**  
Plastic: Grey, Yellow, Red, Azure, Ivory or White. 9.5 x 5 x 10.5cm. Each. CCC526 - CCC532

Glass: Azure. 9.5 x 5 x 10.5cm. Each. CCC531



**Face Mask Dispenser**  
Transparent. 20 x 12 x 11cm. Each. CHX010



**WrapAround Headrest Cover Dispenser**  
For use with CVH147. 370 x 42 x 261mm. Each. CAU115



**Gauze Dispenser - Double**  
White. Plastic. Autoclavable. Each. CCU010



**Cotton Wool Roll Dispenser - One Touch**  
White or Blue. Rolls automatically dispensed into drawer. 3 different slots for roll sizes 1, 2 and 3. 9.5 x 5 x 10.5cm. Each. CCC533, CCC534



**Cup Dispenser**  
Transparent. Each. CNK100



**Hand Pump 3ml**  
Each. GXU010



**5L hand pump**  
Each. GXC205



**Surgical Scrub 500ml hand pump**  
Each. GXC210



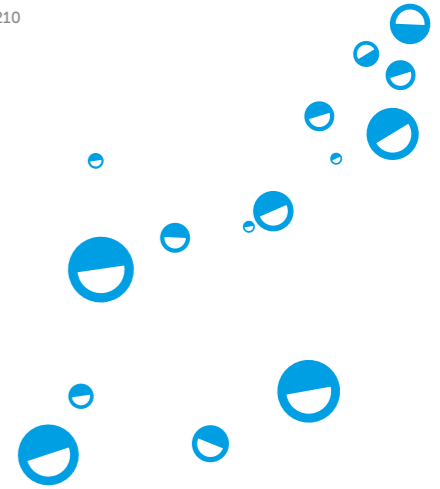
**Saliva Ejector Dispenser**  
Transparent. W 15 x L 16 x H 12cm. Each. CJX010



**Dispenser Tap for 5L**  
Each. GXC206



**Dosing Device 20ml**  
Each. GXU001, GXC200



# Protective Barriers



**WrapAround Tube Sleeve - Strips**  
457 x 53mm or 457 x 44mm  
Pack 250.  
CVH152, CVH154



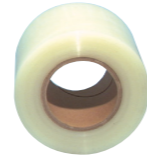
**WrapAround Tray Sleeve**  
To protect instrument trays.  
305 x 432mm. Pack 500.  
CVH120



**WrapAround X-Ray Head Cover**  
381 x 661mm. Pack 250.  
CVH125



**WrapAround Curing Light Sleeve**  
295mm x 250mm. Pack 250.  
CVH130



**WrapAround Barrier Film Roll**  
Lightly adhesive thin film.  
Clear or Blue. 102 x 152mm.  
Roll 1200.  
CVH100, CVH101



**WrapAround Syringe Sleeve**  
To protect the 3 in 1 syringe.  
64 x 255mm. Roll 500.  
CVH135



**WrapAround Full Chair Cover**  
1120 x 1374mm. Roll 150.  
CVH145



**WrapAround Half Chair Cover**  
840 x 916mm. Roll 125.  
CVH146



**WrapAround Headrest Cover**  
285 x 255mm. Roll 250.  
CVH147



**Camera Sleeves**  
Universal. Box 250. 140063  
Shortcam. Box 200. 140064

# Safety Glasses & Visors



**Patient Barrier Glasses**  
Lightweight. Can be worn  
over prescription glasses.  
Each.  
PYG170



**Coversight Safety Glasses**  
Anti-fog and anti-scratch.  
Clear or Smoke lenses.  
Each.  
PYS015, PYS016



**CrackerJack Safety Glasses**  
Anti-fog, anti-scratch.  
Lightweight with flat temples.  
Clear, Smoke, Yellow, Orange  
or Blue lenses. Each.  
PYS000 - PYS004



**UnoTect Patient Lenses**  
**12 Patient Lens Kit**  
1 frame and 12 disposable  
lenses. Frame colours: Blue,  
White, Pink, Green  
or Yellow.  
PYG310 - PYG314



**UnoTect Plus Visor**  
1 frame and 12 disposable  
shields. Frame colours:  
Blue, White, Pink, Green  
or Yellow.  
PYG300 - PYG304  
  
Refill pack.  
PYG323



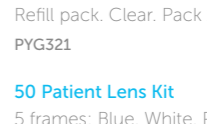
**Pop Safety Glasses**  
For Children. Lightweight.  
Clear or Smoke lenses.  
Each.  
PYS035, PYS036



**Equinox Safety Glasses**  
Ideal for lab use. Anti-fog,  
anti-scratch. Designed with  
a removable insert. Clear or  
Smoke lenses. Each.  
PYS030, PYS031



**Safety Glasses**  
Anti-fog, anti-scratch and  
flexible. Brown, Clear,  
Orange, Amber or Smoke  
lenses. Each.  
PYS060 - PYS064



Refill pack. Clear. Pack 12.  
PYG321

**50 Patient Lens Kit**  
5 frames: Blue, White, Pink,  
Yellow & Green and 50  
disposable lenses.  
PYG320

Refill lenses. Clear. Pack 12.  
PYG322

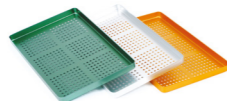
# Sterilisation



**Instrument Rack**  
Large. Each.  
GTI010



**Stainless Steel Cassette**  
Each.  
GTS000



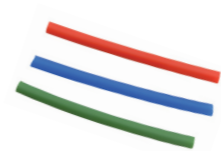
**Metal Perforated Trays**  
Red, Green, Blue, Silver or Gold. Each.  
GTT030 - GTT060



**5 Instrument Cassette**  
Each.  
GTT301



**10 Instrument Cassette**  
Each.  
GTT303



**Silicone Tubes**  
5 Inst Tray or 10 Inst Tray.  
Pack 12.  
GTT307, GTT309



**Disinfection Box**  
Each.  
GTU005



**Instrument Tray Cover**  
Silver. Each.  
GTT005



**Metal Instrument Trays**  
Silver, Red, Green, Gold.  
Each.  
GTT010 - GTT014



**Plastic Instrument Trays**  
Blue, Grey, Red, White, Yellow or Green. Set 2.  
GTT440 - GTT465



**3 Instrument Cassette**  
Each.  
GTT300



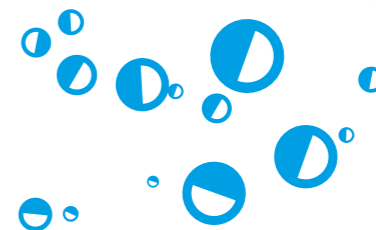
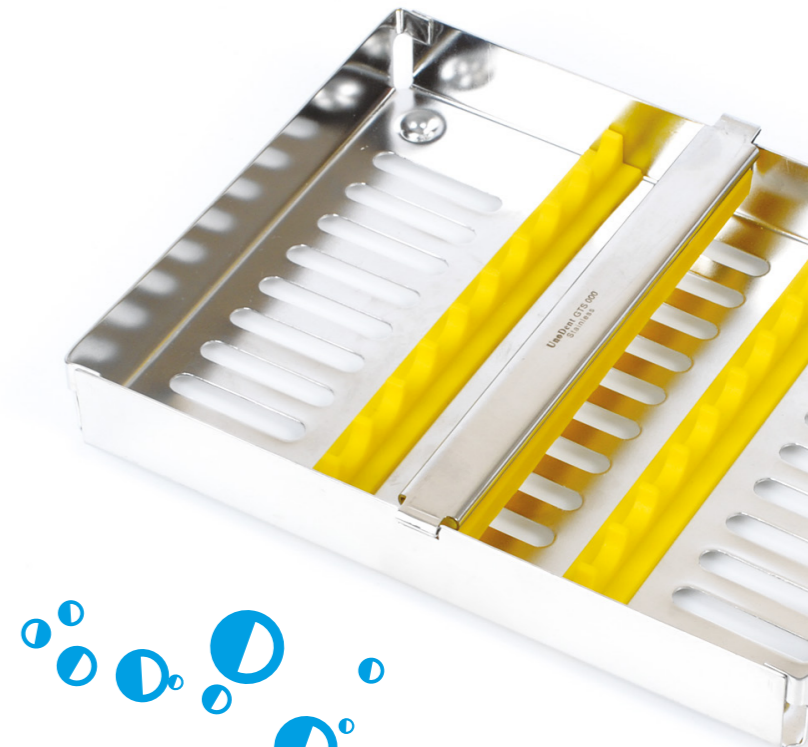
**7 Instrument Cassette**  
Each.  
GTT302



**Sterilray**  
Each.  
GTU010



**Boxtray for Sterilray**  
Each.  
GTU020



# Sterilisation



## Sterilisation Pouches

Features an adhesive strip and transparent blue tinted 2-ply laminate film front for easy instrument identification.

### Pack 200

60 x 100mm	GBS505
90 x 140mm	GBS510
90 x 200mm	GBS515
90 x 230mm	GBS520
135 x 255mm	GBS525
190 x 330mm	GBS535
254 x 375mm	GBS530
305 x 381mm	GBS550

### Pack 250

230 x 305mm	GBS560
270 x 360mm	GBS545



## Sterilisation Flat Reel

Designed to be cut to length and sealed at both open ends.

### 200m Roll

50mm	GBS570
75mm	GBS571
100mm	GBS572
150mm	GBS573
200mm	GBS574
250mm	GBS575
300mm	GBS576



## Hangline Sterilisation Pouches

### Pack 200

90 x 230mm GBS620



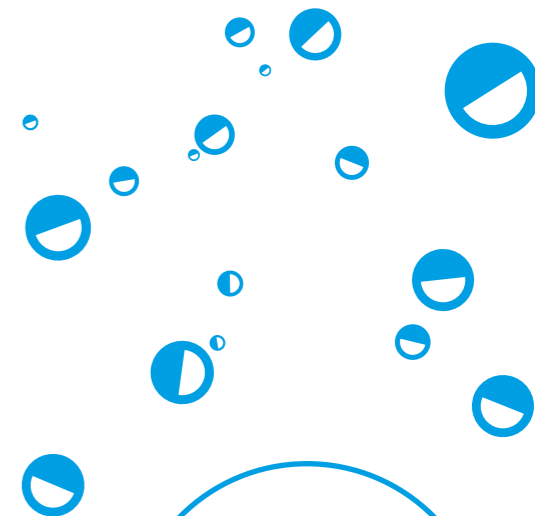
## Purified Water

For use in autoclaves and handpieces. 2 x 5L.  
EVS205



## TST Indicator Strip

Allows the end user to single out individual trays, packs or pouches that were not exposed to sufficient sterilisation conditions. Pack 100.  
GAI085



**Why you love UnoDent**

"Their Sterilisation Pouches have handy colour changing arrows to show when they have been processed."



# Examination

[Click the product codes to view more information](#)

## Mirrors

Our mouth mirrors are designed to give you a great working view whilst being comfortable to hold.



**Mouth Mirror**  
Front surface plane 4  
DMO120



**Mouth Mirror - Sterile single packs**  
Surface plane 4. Pack 50 or 200.  
DMO420, DMO205



**Mouth Mirror Handle**  
Hexagonal grip.  
DMH410



**Mouth Mirror - Bulk packs**  
Mirror and handles.  
Surface plane 4  
DIM104



**Mouth Mirror**  
Magnifying 4 Rear Surface.  
Autoclavable  
DMO410



**Mouth Mirror**  
Rear surface plane 4  
DMO350



**Mouth Mirror Handle**  
Round grip.  
DMH010, DMH050



**Mouth Mirror Handle**  
Hollow Ergonomic.  
DMH011



**Single use mouth mirror and probe pack**  
1 CPITN Probe No.8 DE &  
1 Front Surface Mirror No.4  
DPR180



**Anti Mist Mirror Spray**  
Prevents condensation on mouth mirrors. 50ml.  
DMS000

# Probes



**6 SE**  
Octagonal or Round Handle. Autoclavable.  
DPR113, DPR161, DPR151



**8 DE**  
Sterile probe.  
DPR175



**9 SE**  
Octagonal or Round Handle. Autoclavable.  
DPR115, DPR163, DPR153



**6 Bulk Pack**  
Pack 10  
DIR106



**8 SE**  
Octagonal or Round Handle. Autoclavable.  
DPR114, DPR162, DPR152



**11 DE**  
Octagonal or Round Handle. Autoclavable.  
DPR165, DPR158



**Single use mouth mirror and probe pack**  
1 CPITN Probe No.8 DE &  
1 Front Surface Mirror No.4  
DPR180



**14W**  
Williams. Octagonal Handle. Autoclavable.  
DPR167



**54 SE**  
Octagonal or Round Handle. Autoclavable.  
DPR164, DPR157



**10 Scheff DE**  
Octagonal Handle. Autoclavable.  
DPR166



**23 SE**  
Octagonal Handle. Autoclavable.  
DPR120



**AMP 3**  
Octagonal Handle. Autoclavable.  
DEP300



**AMP 5**  
Octagonal Handle. Autoclavable.  
DEP310

Why you love UnoDent

"They have an extensive range of quality hand instruments that offer a great level of precision"

# Perio Probes



**12 DE - Bulk pack**  
Perio. Sterile CPITN.  
Round Handle.  
Single use. Pack 50.  
DPR170



**15 UNC SE**  
Perio. Round Handle.  
Autoclavable.  
DPR135



**CPITN-C - Bulk pack**  
Perio. Autoclave before  
use. Pack 10.  
DIR200



**14W SE**  
Perio. Octagonal or  
Round Handle.  
Autoclavable.  
DPR116, DPR159



**CP11 SE**  
Perio. Round Handle.  
Autoclavable.  
DIR108



**CPITN-C SE**  
Perio. Octagonal or Round  
Handle. 0.5mm ball at the  
tip. Autoclavable.  
DPR130, DPR160



# Tweezers



**College - Angled**  
Stainless steel. Autoclavable.  
DTW312



**College - Angled**  
Stainless steel.  
Autoclavable.  
DTW318



**College - Endo Lock**  
Stainless steel.  
Autoclavable.  
DTW150



**College Fig 8 - Plain Handle**  
Stainless steel. Autoclavable.  
DTW100



**College - Curved**  
Stainless steel. Autoclavable.  
DTW310



**College - Angled Locking**  
Stainless steel. Autoclavable.  
DTW320



**College Fig 2 - Plain Handle**  
Stainless steel. Autoclavable.  
DTW105



# Cotton Products



**Cotton Wool Rolls**  
Size 1 or 2. Made from 100% absorbent cotton. Box 1000.  
CCA104, CCA105



**Cotton Wool Rolls - Sterile**  
Size 2. 100% pure cotton. Latex-free. 20 packs. 6 sterile rolls per pack.  
CCA110



**Cotton Wool Holder**  
Chrome plated. Diameter 5.5cm, Height 7cm.  
CCC537



**Gauze Squares**  
12.5cm x 12.5cm or 15cm x 15cm. 100% pure cotton. Box 500.  
CCN620, CCN625



**Throat Pack**  
10m x 6cm. 100% pure cotton. 10m Roll.  
CCT615



**Cotton Roll Clip**  
Single-use. Pack 100.  
CCC550



**Cotton Wool Pellets**  
Size 2. 100% pure cotton. Diameter 5.5mm. Box 800.  
CCE611



**Cotton Wool Pellets - Sterile**  
200 packs with 6 sterile pellets per pack.  
CCE615



**Non Woven Swabs**  
8 ply. 5cm x 5cm or 7.5cm x 7.5cm. Box 100.  
CCN803, CCN802



**Throat Pack with String**  
6 x 6cm. 100% pure cotton. Pack 50.  
CCT705

# Tray Liners, Cups & Mouthwash



**Tray Liners - Uncoated**  
275 x 175mm or 305 x 200mm. Pack 250.  
CUD060, CUD065



**Tray Liners - PE Coated**  
4ply white paper with a PE layer. 275mm x 175mm. Pack 4 x 250.  
CUC100



**DispoTray - Biodegradable**  
Disposable pre-formed tray liners. 280 x 180mm. Transparent PLA. Pack 100.  
CUD012



**Concentrated Mouthwash**  
Mint. Makes 1,000 cups of mouthwash. Alcohol and sugar free. 90ml.  
PDM320



**Mouthwash Tablets**  
Alcohol free. Pack 1000.  
Pink - Thymol. CMT010  
Green - Mint. CMT015  
Orange - Orange. CMT017



**DispoTray - Large**  
Disposable pre-formed tray liners. 290 x 190mm. Orange, Blue, Green, Yellow or White. Pack 50.  
CUD000 - CUD003, CUD010



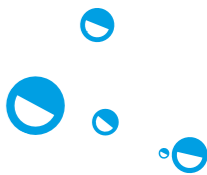
**DispoTray - Small**  
Disposable pre-formed tray liners. 190 x 146mm. White. Pack 50.  
CUD005



**Plastic Cups - 180ml**  
White, Lilac, Light Blue or Aqua Blue. Latex-free. Case 2000.  
CNK015, CNK002, CNK004, CNK006



**Plastic Cups - 200ml**  
White. Case 3000.  
CNK030





# Gloves



## Synthetic Gloves

Latex free. Stretch vinyl.  
Extra Small, Small, Medium,  
Large or Extra Large. Box 100.  
CGU300 - CGU304



## Accelerator Free Nitrile Gloves

Extra Small, Small,  
Medium. Ambidextrous.  
Latex-free. Ice Blue.  
Box 200.  
CGN280 - CGN295



## Nitrisoft Nitrile Gloves

Extra Small, Small,  
Medium, Large.  
Ambidextrous. Latex-free.  
Blue. Box 200.  
CGN050 - CGN070



## Latex Gloves

Powder-Free. Extra Small,  
Small, Medium, Large, Extra  
Large. Box 200.  
CGU256 - CGU290



## Vinyl Gloves

Powder-Free. Extra Small,  
Small, Medium, Large.  
Box 200.  
CGU310 - CGU313

Why you love  
UnoDent

"They have gloves to fit all  
types of preference"

# Bibs



## Disposable Bibs - 2ply

Perforated cut-out for neck  
and tie fastening. Latex-free.  
Fits dispenser CAU113 and  
COP110. 50 x 60cm. Blue,  
Green or White. Roll 80.  
COP100, COP101, COP102



## Disposable Bibs - 3ply

45 x 32.2cm. 2-ply paper,  
1-ply PE. Blue, Green or White.  
Pack 500.  
COD301, COD302, COD300



## Bib with Collection Pocket

Disposable. 1 ply Plastic &  
1 ply Paper. (38 x 68cm).  
Pack 100.  
COP015



## Bib Holder - Thermoplastic

White, Blue or Pink. Latex  
free. Autoclavable 121°C.  
Each.  
COX215, COX216, COX217



## PEVA Bib - Blue

42.5 x 57.5cm. Hook  
and loop neck fastening.  
Polyethylene vinyl acetate.  
Each.  
COP020



## PEVA Bib - White

60 x 45cm. White Hook and  
loop neck fastening.  
Polyethylene vinyl acetate.  
Each.  
COP022



## Bib Chain - Metal

Steel, Nickel plated. Each.  
COX010



# Needle Holders & Scissors

[Click the product codes to view more information](#)

## Needle Holders



**Gillies - Left handed**  
Autoclavable. Each.  
DNE110



**Thomson-Walker  
8" Screw Joint**  
Autoclavable. Each.  
DNE130



**Mayo Hegar  
Size 6"**  
Autoclavable. Each.  
DNE144



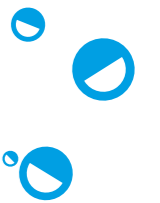
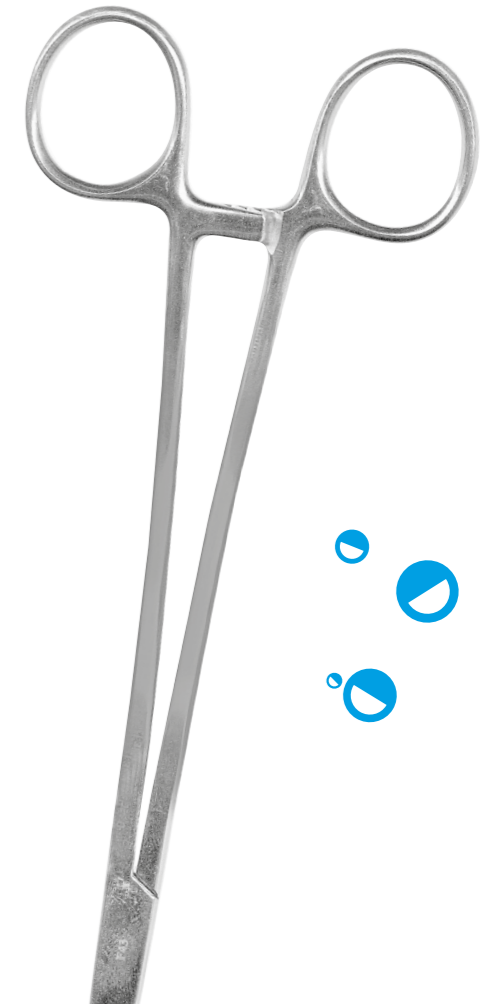
**Gillies - Right Handed**  
Autoclavable. Each.  
DNE115



**Mathieus Size 7"**  
Autoclavable. Each.  
DNE140



**Mayo Hegar Size 7"**  
Autoclavable. Each.  
DNE145



# Scissors



**5.5" Sharp/Sharp**  
Autoclavable. Each.  
DSD300



**Suture - Curved**  
Autoclavable. Each.  
DSD325



**Serrated - Straight**  
Autoclavable. Each.  
DSD350



**Bee-Bee Crown - Curved**  
Autoclavable. Each.  
DSD310



**General Purpose**  
Autoclavable. Each.  
DSD320



**Suture - Straight**  
Autoclavable. Each.  
DSD330



**Dressing - all purpose**  
Autoclavable. Each.  
DSD500



**Bee-Bee Crown - Straight**  
Autoclavable. Each.  
DSD315

# Forceps



**Cheatles 8"**  
Autoclavable. Each.  
DCH310



**Cheatles 10"**  
Autoclavable. Each.  
DCH312



**Fickling - Toothed**  
Each.  
DFO210





# X-Ray

Click the product codes to view more information

## Aiming Devices

### QuickShot

Our QuickShot digital sensor holders are made from medical grade plastic, autoclavable and are colour coded for easy identification.



**Horizontal Bitewing**  
2607, 3105, 3305, 3307.  
Pack 3.  
XXB500, XXB503, XXB505,  
XXB506



**Apical Molar Region**  
4305, 3905, 3707, 4307.  
Pack 3.  
XXB514, XXB511, XXB510,  
XXB516



**Aiming Ring**  
Fit all holders. Each.  
XXB517



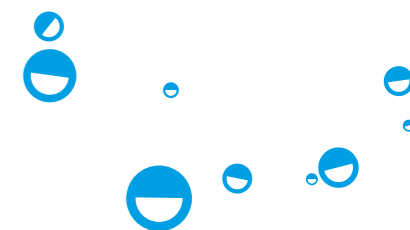
**Vertical Bitewing/Apical Front**  
Pack 3.  
XXB501, XXB507, XXB504



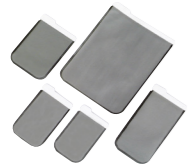
**Starter Kits**  
3707/2607/P, 3705/2405/P,  
4307/3307/P, 4305/3305/P,  
4305/3105/P.  
XXB509, XXB508, XXB515,  
XXB513, XXB512



**Digital Sensor Holders Kit**  
For Phosphor Plates.  
Size 1 or 2.  
XXB499, XXB502



# Covers & Sleeves



**Barrier Envelopes**  
 Sizes: 0, 1, 2, 3, 4. Pack 100.  
 QWU000 - QWU004



**Bite Block Hygiene Sleeve**  
 4.6 x 2.1cm or 8.0 x 4.0cm. Box 250.  
 QWU020 - QWU021



**Quickshot Sensor Covers**  
 Regular or Large. Box 500.  
 XXB520 - XXB521



**Quickshot Wireless Sensor No.2 Envelope**  
 Box 500.  
 XXB523



**Film Pockets**  
 6.7x9.5cm, 10x13.6cm, 12x12cm, 14x22cm. Box 1000.  
 XXB350 - XXB351



**Bite Covers**  
 Sizes: 0 (20 x 30mm), 1 (20 x 40mm), 2 (30 x 40mm), 3 (27 x 54mm). Pack 200.  
 QWU010 - QWU013



**WrapAround Digital X-Ray Sensor Cover**  
 Latex-free. Size 1 or 2. Pack 500.  
 CVH150



**Quickshot Phosphor Plate Envelopes**  
 Latex-free. Size 1 or 2. Pack 500.  
 XXB524 - XXB525



**Universal Film Mounts**  
 43 x 43mm. Roll of 1000.  
 XXB300

# Film, Materials & Accessories



**Developer**  
 Ready to use. 2 x 5L  
 XUO010



**Fixer**  
 Ready to use. 2 x 5L  
 XUO020



**X-Ray Viewer**  
 165mm x 300mm. Each  
 XXB400



**Single Hanger**  
 Autoclavable. Each.  
 XXH001



**Envelopes**  
 Paper. Pack 200.  
 XX1011



**Periapical Speed Film**  
 31 x 41mm. Box 150  
 Speed E XAU000  
 Speed F XAU010



**Panoramic Green Sensitive Film**  
 Pack 100.  
 12 x 30cm XGU170  
 15 x 30cm XGU171



**X-Ray Marker**  
 Indelible ink.. Each.  
 XX1210



**10 Hanger**  
 Autoclavable. Each.  
 XXH010





# Oral Hygiene & Prevention

## Ultrasonic inserts



### DF-3 25K

For use on all stack type (magnetostrictive) ultrasonic scaling units. Recommended autoclave temperature 134°C. Each.

PTD001



### DF-10 25K

For use on all stack type (magnetostrictive) ultrasonic scaling units. Recommended autoclave temperature 134°C. Each.

PTD003



### DF-1000 25K

For use on all stack type (magnetostrictive) ultrasonic scaling units. Recommended autoclave temperature 134°C. Each.

PTD005



### DP-10 25K

For use on all stack type (magnetostrictive) ultrasonic scaling units. Recommended autoclave temperature 134°C. Each.

PTD007



### DF-3 30K

For use on all stack type (magnetostrictive) ultrasonic scaling units. Recommended autoclave temperature 134°C. Each.

PTD002



### DF-10 30K

For use on all stack type (magnetostrictive) ultrasonic scaling units. Recommended autoclave temperature 134°C. Each.

PTD004



### DF-1000 30K

For use on all stack type (magnetostrictive) ultrasonic scaling units. Recommended autoclave temperature 134°C. Each.

PTD006



### DP-10 30K

For use on all stack type (magnetostrictive) ultrasonic scaling units. Recommended autoclave temperature 134°C. Each.

PTD008



# Scaler Tips



**Scaler G1**

For EMS      QSU001  
 For Satelec    QSU055  
 For NSK        QSU110  
 For KaVo      QSU221



**Scaler G3**

For EMS      QSU003  
 For Satelec    QSU057  
 For NSK        QSU167  
 For Sirona    QSU112  
 For KaVo      QSU223



**Scaler G5**

For EMS      QSU005  
 For Satelec    QSU059  
 For Sirona    QSU169  
 For KaVo      QSU225



**Scaler 10X**

For Satelec    QSU052



**Scaler 10P**

For Satelec    QSU071



**Scaler G2**

For EMS      QSU002  
 For Satelec    QSU056  
 For KaVo      QSU222



**Scaler G4**

For EMS      QSU004  
 For Satelec    QSU058  
 For NSK        QSU113  
 For Sirona    QSU168  
 For KaVo      QSU224



**Scaler A1**

For Satelec    QSU054



**Scaler 10Z**

For Satelec    QSU053



**Perio P1**

For EMS      QSU008  
 For Satelec    QSU061  
 For NSK        QSU117



**Perio P4**

For Satelec    QSU065  
 For NSK        QSU120  
 For Sirona    QSU174



**Perio H3**

For Satelec    QSU066



**Endo E3**

For EMS      QSU016  
 For Satelec    QSU069



**Perio P3**

For EMS      QSU011  
 For Satelec    QSU064  
 For NSK        QSU119  
 For Sirona    QSU173



**Perio P5**

For EMS      QSU013



**Endo E2**

For EMS      QSU015



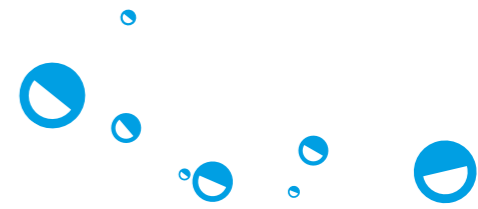
**Endo E4**

For EMS      QSU017  
 For NSK        QSU070



**Torque Wrenches**

For EMS      QSU250  
 For Satelec    QSU255  
 For NSK        QSU260  
 For Sirona    QSU265  
 For KaVo      QSU270



# Hand Scalars



**H4 Hygienist SE**  
Round or Octagonal handle. Each.  
DSC260, DSC261



**H6 Hygienist SE**  
Round or Octagonal handle. Each.  
DSC266, DSC265, DSC352



**H6/7 Hygienist DE**  
Round or SoftGrip handle Each.  
DSC267, DSC354, DSC355, DUD009



**1 Jacquette SE**  
Round or Octagonal handle. Each.  
DSC293, DSC292



**3 Jacquette SE**  
Round handle. Each.  
DSC297



**H5 Hygienist SE**  
Round or Octagonal handle. Each.  
DSC263, DSC262, DSC351



**H7 Hygienist SE**  
Round or Octagonal handle. Each.  
DSC268, DSC269



**H6/7 Single use**  
Pack 10.  
DIS106



**2 Jacquette SE**  
Round or Octagonal handle.  
DSC294, DSC295



**0/1 McFarlane DE**  
Round handle. Each.  
DSC385

# Hand Scalars



**2/3 McFarlane DE**  
Round or SoftGrip handle. Each.  
DSC282, DSC380, DUD011



**6/7 McFarlane TC DE**  
Round handle. Each.  
DSC286



**204 Sickle DE**  
Round or SoftGrip handle. Each.  
DSC390, DUD006



**311/312 Savler**  
SoftGrip handle. Each.  
DSC291



**4/5 McFarlane DE**  
Round or SoftGrip handle. Each.  
DSC284, DSC381, DSC384, DUD012



**8/9 McFarlane TC DE**  
Round handle. Each.  
DSC288



**U15 Towner SE**  
Round handle. Each.  
DSC360





# Curettes



**1/2 Gracey DE**  
Round or SoftGrip handle. Each.  
DSC300, DSC370, DUD018



**5/6 Gracey DE**  
Round or SoftGrip handle. Each.  
DSC372, DUD020



**9/10 Gracey DE**  
Round or SoftGrip handle. Each.  
DSC374, DUD022



**13/14 Gracey DE**  
Round or SoftGrip handle. Each.  
DSC376, DUD024



**5/6 Langer**  
SoftGrip handle. Each.  
DUD036



**3/4 Gracey DE**  
Round or SoftGrip handle. Each.  
DSC301, DSC371, DUD019



**7/8 Gracey DE**  
Round or SoftGrip handle. Each.  
DSC373, DUD021



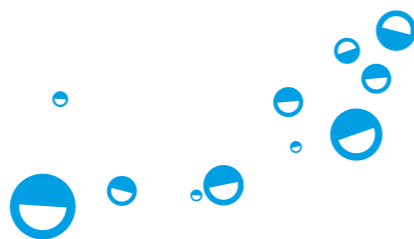
**11/12 Gracey DE**  
Round or SoftGrip handle. Each.  
DSC307, DSC375, DUD023



**1/2 Langer**  
SoftGrip handle. Each.  
DUD035



**Lucas 86 Bone**  
SoftGrip handle. Each.  
DSC290



# Prophy Paste



**Oil-Based - Coarse**  
Mint. Fluoride free. 250g.  
PPA025



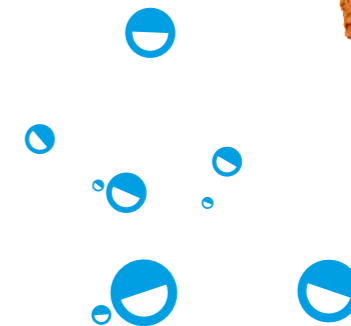
**Alpha-Pro - Oil-free - Coarse**  
Mint. Fluoride free. 300g.  
PPA020



**Oil-Based - Medium**  
Orange. Fluoride free. 250g.  
PPA030



**Alpha-Pro - Oil-free - Medium**  
Orange. Fluoride free. 300g.  
PPA015



# Polishing Cups and Brushes



## Prophy Cups RA Steel Shank

Latex Free. Vibration-free.  
Single-Use. Box 36.

PRC314

Latex Free. Vibration-free.  
Single-use. Box 144.

PRC308



## Rubber Cups RA Steel Shank

Vibration-free. Single-Use.  
Box 36.

PRC310



## Rubber Cups RA Soft

Pink. Latex Free.  
Autoclavable. Made from  
synthetic elastomer  
(polymer). Single-Use.  
Box 36.

PRC500



## Rubber Cups RA Medium

Purple. Latex Free.  
Autoclavable. Made from  
synthetic elastomer (polymer).  
Single-Use. Box 36.

PRC501



## Rubber Cups RA Hard

Blue. Latex Free.  
Autoclavable. Made from  
synthetic elastomer  
(polymer). Single-Use.  
Box 36.

PRC502



## Prophy Cups Junior Screw-in

Latex Free. Autoclavable.  
Single-Use. Box 36.

PRB312



## Rubber Cups Screw-in Medium

Pink. Latex Free. Vibration-  
free. Autoclavable. Made  
from synthetic elastomer  
(polymer). Box 36.

PRC520



## Rubber Cups Screw-in Medium

Purple. Latex Free Vibration-  
free. Autoclavable. Made  
from synthetic elastomer  
(polymer). Box 36.

PRC521



## Rubber Cups Screw-in Hard

Blue. Latex Free Vibration-  
free. Autoclavable. Made  
from synthetic elastomer  
(polymer). Box 36.

PRC522



## Prophy Cups Snap-On

Latex Free. Single-Use.  
Box 36.

PRC412



## Rubber Cups Snap-on Soft

Pink. Latex Free. Vibration-  
free. Autoclavable. Made  
from synthetic elastomer  
(polymer). Single-Use.  
Box 36.

PRC510



## Rubber Cups Snap-on Medium

Purple. Latex Free.  
Autoclavable. Made from  
synthetic elastomer (polymer).  
Single-Use. Box 36.

PRC511



## Nylon Brushes Junior Cup Screw-in

Vibration-free. White nylon.  
Autoclavable. Single-Use.  
Box 50.

PRN030



## Rubber Cups Snap-on Hard

Blue. Latex Free. Autoclavable.  
Made from synthetic  
elastomer (polymer).  
Single-Use. Box 36.

PRC512



## Nylon Brushes Junior Cup RA

Latch Type. Vibration-free.  
White nylon. Autoclavable.  
Single-Use. Box 50.

PRN010



## Nylon Brushes Junior Cup RA

Vibration-free. White nylon.  
Autoclavable. Single-Use.  
Box 150.

PRN012



## Bristle Brushes Junior Cup 31A Screw-in

Vibration-free. Autoclavable.  
Single-use. Box 36.

PRB410



## Bristle Brushes Snap-on

White. Vibration-free.  
Autoclavable. Single-Use.  
Box 36.

PRB300



## Bristle Brushes Junior Cup RA

Latex Free. Single-Use.  
Box 144.

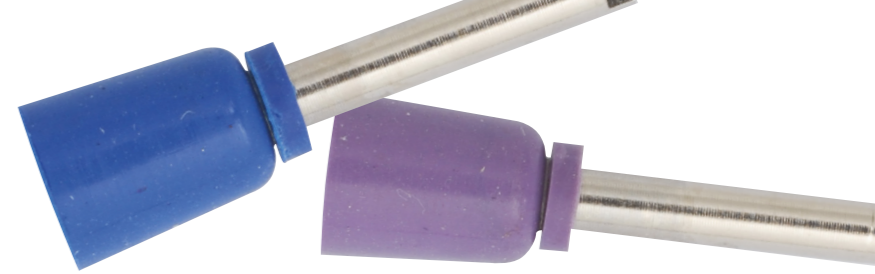
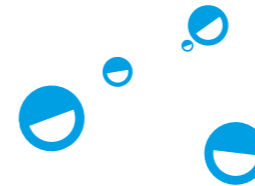
PRB106



## Bristle Brushes Junior Cup RA

Latch Type. Vibration-free.  
Single-Use. Box 50.

PRB110



# Interdental Brushes



**Mini XXX Fine**  
Purple. Coated Stainless steel wire. Latex-free. Pack 6.  
PAU001



**Mini Fine**  
Silver. Coated Stainless steel wire. Latex-free. Pack 6.  
PAU004



**Standard XX Small**  
Uncoated Stainless steel wire. Latex-free. Pack 6.  
PAU010



**Standard Small**  
Uncoated Stainless steel wire. Latex-free. Pack 6.  
PAU012



**Standard Large**  
Uncoated Stainless steel wire. Latex-free. Pack 6.  
PAU014



**Mini XX Fine**  
Blue. Coated Stainless steel wire. Latex-free. Pack 6.  
PAU002



**Mini Medium**  
Gold. Coated Stainless steel wire. Latex-free. Pack 6.  
PAU005



**Standard X Small**  
Uncoated Stainless steel wire. Latex-free. Pack 6.  
PAU011



**Standard Medium**  
Uncoated Stainless steel wire. Latex-free. Pack 6.  
PAU013



**Standard X Large**  
Uncoated Stainless steel wire. Latex-free. Pack 6.  
PAU015



**Premier XXX Small**  
Gold. Stainless steel wire. Latex-free. Pack 6.  
PAU019



**Premier X Small**  
Bronze. Stainless steel wire. Latex-free. Pack 6.  
PAU021



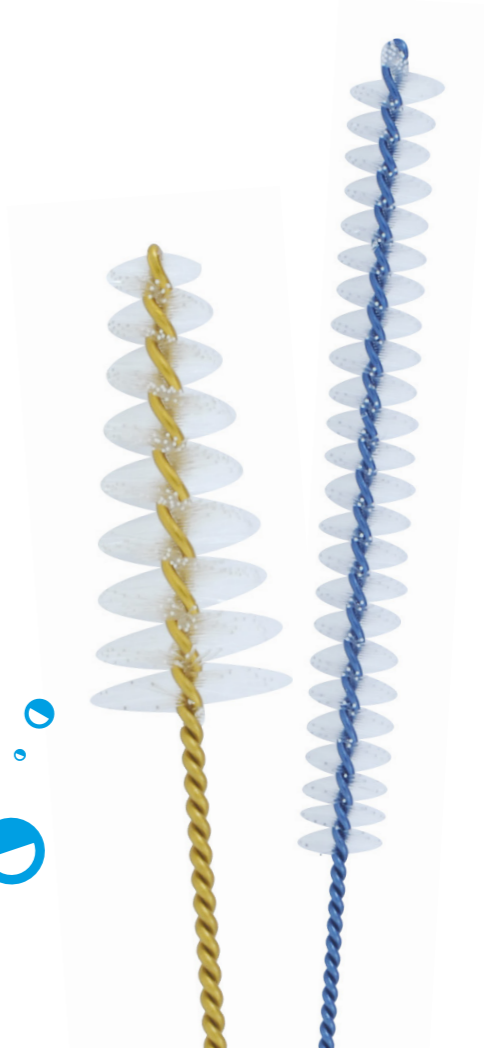
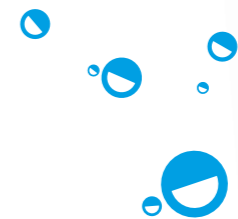
**Standard Large**  
Silver. Stainless steel wire. Latex-free. Pack 6.  
PAU023



**Premier XX Small**  
Blue. Stainless steel wire. Latex-free. Pack 6.  
PAU020



**Premier Medium**  
Gold. Stainless steel wire. Latex-free. Pack 6.  
PAU022



# Brushes



## Interdental Brush Handle

For use with UnoDent Mini Interdental Brushes.  
Latex-free. Each.

PAU000



## Toothbrushes

Medium bristles. Tongue Cleaner.  
Assorted colours. 2 of each colour:  
Blue, Green, Grey, Yellow, Pink and  
Purple.

PAU100



# Sealants & Accessories



## Unolux Seal

Light-curing composite  
for sealing fissures. Shade:  
transparent. 2 x 3ml.

PSU010



## DE-SEN LC Kit

A light-curing, fluoride-  
releasing one-component  
preparation for the treatment  
of dentine hypersensitivity.  
1 x 4.5ml Bottle, 1 Handle  
and 50 Application Tips.

PFU000



## Mandrel - RA for Snap-On Cups / Brushes

Autoclavable. 1 mandrel.

BYS000



## Unolux Seal F Kit

Light-curing composite  
for sealing fissures. 2 x 2ml  
syringes, white with fluoride  
and 20 intra-oral tips.

PSU020



## Unolux Seal F Intra-oral Tips

Pack 100.

PSX001





# Burs

[Click the product codes to view more information](#)

## Sterile Diamond Burs

### Individually Packed Diamond Burs

Box 25.

**Cylinder FG**

541 542 607 730 745

Medium Grit

BES541	BES542	BES607	BES730	BES745
--------	--------	--------	--------	--------

**Round End Tapered FG**

639 640 710 714

Medium Grit

BES639	BES642	BES710	BES715
--------	--------	--------	--------

Fine Grit

BES638	BES641	BES709	BES714
--------	--------	--------	--------

Extra Fine Grit

-	BES640	-	BES713
---	--------	---	--------

**Pear FG**

566

Medium Grit

BES566
--------

**Round FG**

520 708

Medium Grit

BES520	BES708
--------	--------

**Flame FG**

724

Medium Grit

BES726
--------

Fine Grit

BES725
--------

Extra Fine Grit

BES724
--------

**Truncated Cone FG**

556

Medium Grit

BES556
--------

**Round Collar FG**

526

Medium Grit

BES526
--------

**Flame Cone FG**

562

Fine Grit

BES563
--------

Extra Fine Grit

BES562
--------

# Diamond Burs

## Individually Packed Diamond Burs

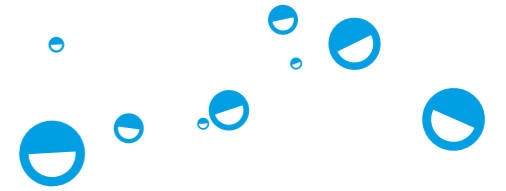
Non-sterile. Each.

Cylinder FG	541	541S	542	543	546	607	657	659	700	710	730	745
Medium Grit	BD541	BD541S	BD542	BD543	BD546	BD607	BD657	BD659	BD700	BD710	BD730	BD745
Coarse Grit	BD541C	-	BD542C	-	BD546C	-	-	-	-	-	-	BD745C
Long Shank	-	-	-	-	BD546L	-	-	-	-	-	-	-

Pear FG	565	566	567	569	Diablo FG	536	537	538	608	721
Medium Grit	BD565	BD566	BD567	-	Medium Grit	BD536	BD537	BD538	BD608	BD721
Coarse Grit	-	BD2342	BD2344	BD2348						

Round FG	519	520	520S	521	522	645	708	646
Medium Grit	BD519	BD520	BD520S	BD521	BD522	BD645	BD708	-
Coarse Grit	-	-	-	BD521C	BD522C	-	-	BD001C
Fine Grit	-	-	-	-	BD522F	-	-	-
Ultra Fine Grit	-	-	-	-	BD522U	-	-	BD001S

Wheel FG	512	513	514	619
Medium Grit	BD512	BD513	BD514	BD619



Round with Collar FG	525	526	527
Medium Grit	BD525	BD526	BD527

Round HP	101	102
Coarse Grit	BHU101	BHU102

# Diamond Burs

## Individually Packed Diamond Burs

Non-sterile. Each.

Round End Tapered FG	501	502	503	504	635	636	637	639	640	713	714
Medium Grit	BD501	BD502	BD503	BD504	BD635	BD636	BD637	BD639	BD640	BD713	BD714
Coarse Grit	-	-	-	-	-	-	BD637C	-	-	-	-
Extra Fine Grit	-	-	-	-	-	-	-	BES637	-	-	-

Truncated Cone FG	550	551	552	554	555	556	556S	557	559	560	622	623
Medium Grit	BD550	BD551	BD552	BD554	BD555	BD556	BD556S	BD557	BD559U	BD560	BD622	BD623
Coarse Grit	-	-	-	BD554C	-	BD556E	-	BD557C	-	-	-	BD623C
Fine Grit	-	-	-	-	-	BD556F	-	-	-	-	-	-
Ultra Fine Grit	-	-	-	-	-	BD556U	-	BD557U	-	-	-	-

Truncated Cone FG	624	626	627	629	630	712
Medium Grit	BD624	BD626	BD627	BD629	BD630	BD712
Coarse Grit	-	BD626C	-	-	-	-

Double Truncated Cone FG	632
Medium Grit	BD632

Subgingival Flame FG	540
Medium Grit	BD540

Inverted Cone FG	530	531	534	535	709
Medium Grit	BD530	BD531	BD534	BD535	BD709


  

Flame RA	247
Medium Grit	BGU247



# Diamond Burs

## Individually Packed Diamond Burs


Non-sterile. Each.

Flame FG	
	562 563 564 582 650 651 652 675 719 723 724
Medium Grit	BD562 BD563 BD564 BD582 BD650 BD651 - BD675 BD719 BD723 BD724
Coarse Grit	- - - - - - - - - -
Fine Grit	BD562F - - BD582F - - - - -
Ultra Fine Grit	BD562U - BD564U BD582U BVU650 BVU651 BVU652 - - -

Cylindrical Domed FG		Cylindrical Bulk Reducers FG	
	544 545 729 731		CY1 CY2 CY3 CY4
Medium Grit	BD544 BD545 BD729 BD731	Medium Grit	BDB001 BDB002 BDB003 BDB004

Cylindrical Pointed FG		
	561 613 615 716	290/010 290/012
Medium Grit	BD561 BD613 BD615 BD716	BD2900 BD2902
Coarse Grit	- - - -	- -
Fine Grit	BD561F - - -	- -
Ultra Fine Grit	BD561U - - -	BD2901 BD2903

Conical Bulk Reducers FG	
	519-018S 519-018S 521-019 513-017
Medium Grit	BDB006 BDB007 BDB008 BDB005

Tapered Pointed FG	
	558 753
Medium Grit	BD558 BD753
Coarse Grit	- -
Fine Grit	BD558F -

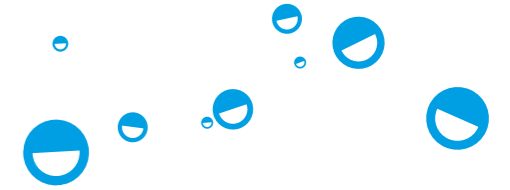
Tiger Stripe FG	
	0.3mm 0.5mm
Medium Grit	BDTS03 BDTS05










# Gold Diamond Burs

## Individually Packed Diamond Burs



Non-sterile. Each.









**Round FG**

							
	001/010	001/012	001/014	001/016	001/018	001/021	001/023
Medium Grit	BJM051	BJM052	BJM053	BJM054	BJM055	BJM056	BJM057
Coarse Grit	-	-	-	-	-	-	BJM058
Fine Grit	-	-	-	-	BJM059	-	-
Extra Fine Grit	-	-	-	-	BJM061	-	-
Ultra Fine Grit	-	-	-	-	BJM063	-	-



**Round with Collar FG**

		
	002/012	002/017
Medium Grit	BJM070	BJM071

**Flat End Taper FG**

						
	171/012	171/015	172/014	173/014	173/016	173/018
Medium Grit	BJM240	BJM241	BJM251	BJM270	BJM271	BJM272
Coarse Grit	-	BJM246	-	-	BJM277	-
Fine Grit	-	-	-	-	BJM281	-


**Inverted Cone FG**

		
	225/013	225/019
Medium Grit	BJM100	BJM101






**Cylinder FG**

							
	108/009	109/010	109/012	109/015	110/014	111/012	111/014
Medium Grit	BJM150	BJM151	BJM152	BJM153	BJM170	BJM180	BJM181
Coarse Grit	-	-	-	BJM158	-	-	BJM186



**Round End Cylinder FG**

		
	139/009	139/012
Medium Grit	BJM201	BJM202

**Round End Taper FG**

					
	198/014	198/017	199/014	199/016	199/018
Medium Grit	BJM363	BJM364	BJM302	BJM303	BJM304

**Inverted Cone with collar FG**

		
	019/012	019/017
Medium Grit	BJM091	BJM092

# Gold Diamond Burs

## Individually Packed Diamond Burs

Non-sterile. Each.

**Flame FG**

	247/013	001/012
Fine Grit	BJM422	BJM437
Extra Fine Grit	BJM423	BJM440

**Pear FG**

	233/016	237/012	238/012
Medium Grit	BJM132	BJM130	BJM133

**Tapered Pointed FG**

	167/012	166/017
Medium Grit	BJM400	BJM402
Coarse Grit	-	-
Fine Grit	BJM405	-
Ultra Fine Grit	BJM409	-

**Football FG**

	257/020
Fine Grit	BJM006
Extra Fine Grit	BJM009
Ultra Fine Grit	BJM012

**Pointed Cylinder FG**

	130/012
Fine Grit	BJM583



# Twister Diamond Burs

## Individually Packed Diamond Burs

Non-sterile. Each.

**Twister FG**

	257/023	197/020	198/015	198/016	198/020	199/016
Coarse Grit	BDT025	BDT000	BDT005	BDT010	BDT015	BDT020
Extra Coarse Grit	BDT055	BDT030	BDT035	BDT040	BDT045	BDT050

**Gold Twister FG**

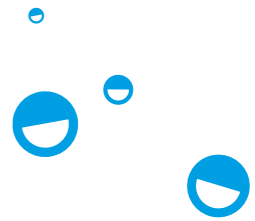
	257/023	197/020	198/015	198/016	198/020	199/016
Coarse Grit	BDT085	BDT060	BDT065	-	BDT075	BDT080
Extra Coarse Grit	BDT115	BDT090	BDT095	BDT100	BDT105	BDT110

### Twister Kit

12 burs – 6 shapes, each in both coarse and extra coarse. Contains: 257/023, 197/020, 198/015, 198/016, 198/020, 199/016. BDT200

### Gold Twister Kit

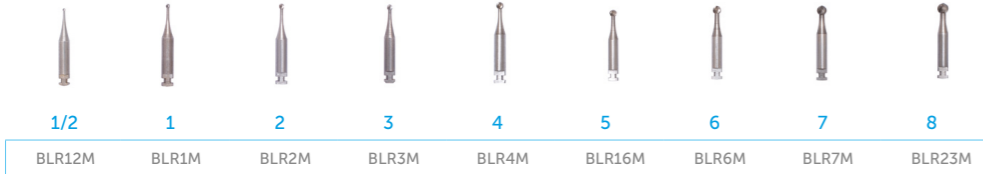
12 burs – 6 shapes, each in both coarse and extra coarse. Contains: 257/023, 197/020, 198/015, 198/016, 198/020, 199/016. BDT300



# Steel Burs

Non-sterile. Pack 6.

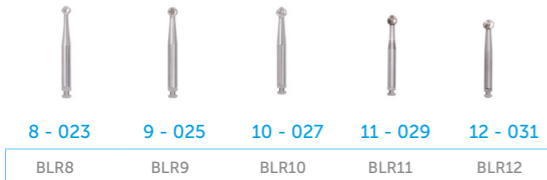
## Round Miniature Head RA



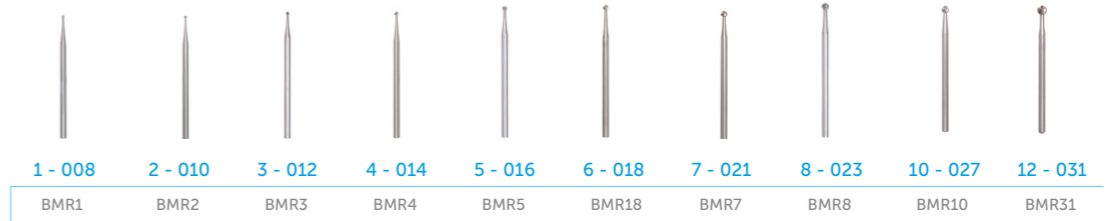
## Round RA



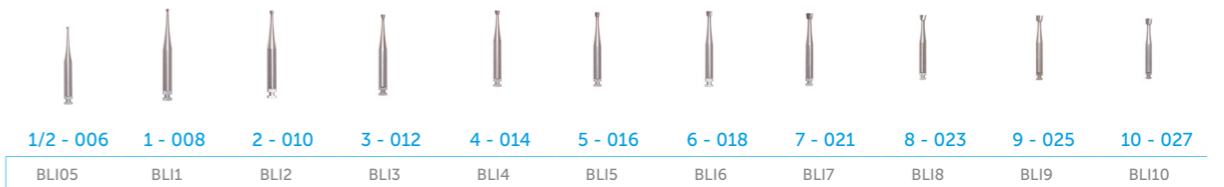
## Round RA



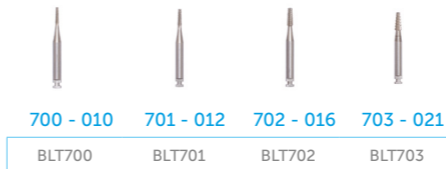
## Round HP



## Inverted Cone RA



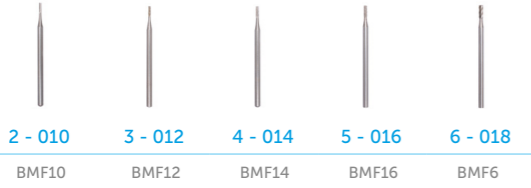
## Tapered Fissure RA Cross Cut



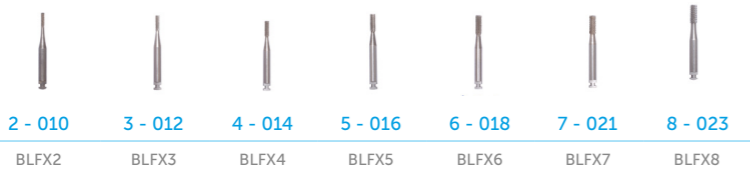
# Steel Burs

Non-sterile. Pack 6.

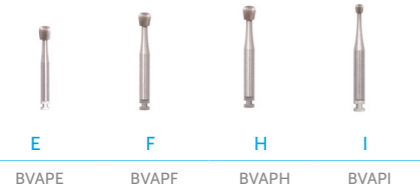
Flat Fissure HP



Flat Fissure RA Cross Cut



Finishing Burs Pear RA



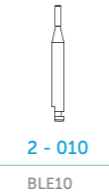
Finishing Burs Flame RA



Round RA



End Cutting RA



# Tungsten Carbide Burs

Non-sterile.

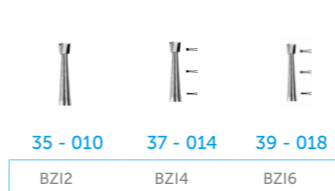
Round FG Plain Cut



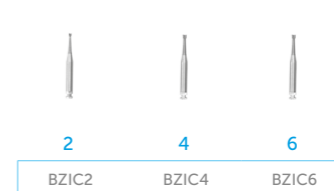
Round RA Plain Cut



Inverted Cone FG Plain Cut



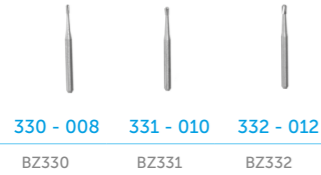
Inverted Cone RA Plain Cut



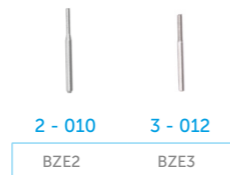
# Tungsten Carbide Burs

Non-sterile.

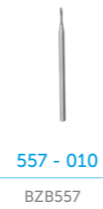
Pear  
Amalgam FG  
Plain Cut



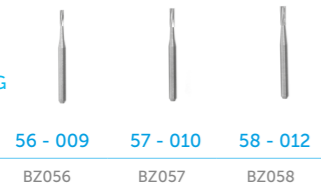
End  
Cutting FG



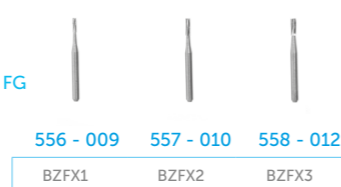
Flat Fissure  
HP Cross Cut



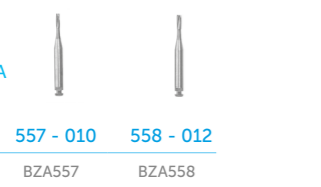
Flat Fissure FG  
Plain Cut



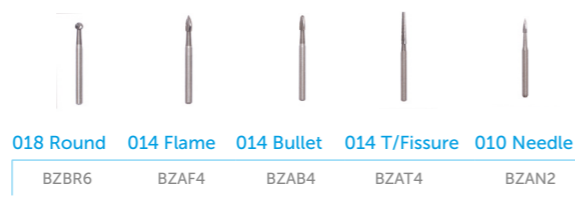
Flat Fissure FG  
Cross Cut



Flat Fissure RA  
Cross Cut



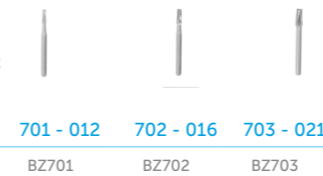
Finishing  
Burs



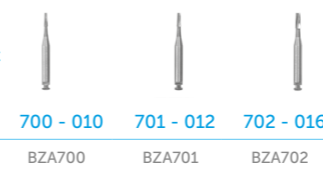
Taper Fissure  
FG Plain Cut



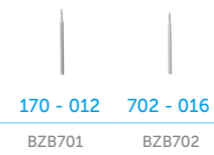
Taper Fissure  
FG Cross Cut



Taper Fissure  
FG Cross Cut



Taper Fissure  
FG Plain Cut



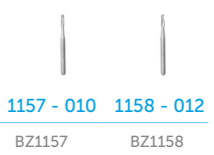
Straight  
Fissure FG  
Fine Cross  
Cut - Flat



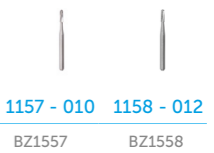
Straight  
Fissure FG  
Fine Cross  
Cut - Dome



Dome Fissure  
FG Plain Cut



Dome Fissure  
FG Cross Cut



# Tungsten Carbide Burs

## WildCat Burs

Non-sterile. Pack 5.

### FG Plain Cut

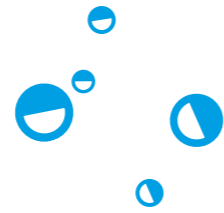


	3 - 012	1157 - 010	1158 - 012	330 - 008	331 - 010	332 - 012	57 - 010
Shape	Round	Dome F	Dome F	Pear Am	Pear Am	Pear Am	Flat F
	BWR3	BW1157	BW1158	BW330	BW331	BW332	BW057

### FG Cross Cut



	1157 - 010	1158 - 012	557 - 010	558 - 012	2057 - 010	1958 - 012
Shape	Dome F	Dome F	Flat F	Flat F	Flat	Dome
	BW1557	BW1558	BWFX2	BWFX3	BW2057	BW1958



# Bur Kits



### Crown Preparation Kit

8 diamond burs for bevelling margins, shoulder preparation, bulk reduction, molar and premolar preparation, interproximal finishing, final finishing and crown preparation.  
 Contains: 290/010, 290/012, 556, 556C, 554C, 557U/F, 558F, 546.  
 BD001



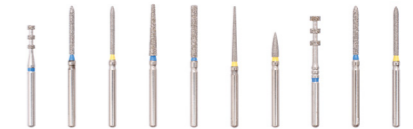
### Cavity Preparation Kit

8 diamond burs used for small penetration, cavity preparation, undercutting and extension of cavity.  
 Contains: 520, 527, 531, 567, 541, 541C, 542, 537.  
 BD004



### Composite & Porcelain Finishing Kit

10 ultrafine diamond burs specifically for trimming and finishing composite material, crown preparation finishing, and porcelain veneer after cementation trimming.  
 Contains: 290/010, 290/012, 556, 556C, 554C, 557U/F, 558F, 546.  
 BD006



### Laminate Veneer Kit

10 diamond burs including 'Tiger Stripes' which cut to a depth of 0.3mm or 0.5mm, diamonds to clean off stripes and luting cement, and ultrafine finishers for complete aesthetics.  
 Contains: Tiger Stripes (0.3mm & 0.5mm), 290/010, 290/010U/F, 556, 546 Long, 557U/F, 561U/F, 290/012, .290/012U/F.  
 BD008

# Bur Holders



**12 Hole - Chrome Plated**

Each.  
 FG BXS020  
 RA BXS025



**24 Hole - Chrome Plated Inserts**

Autoclavable at 121°C (except lids). Each.  
 FG BXS090  
 RA BXS091  
 HP BXS092  
 FG/RA BXS093



**24 Hole - Aluminium**

Blue, Red or Yellow. Each.  
 FG BXS065, BXS070, BXS075  
 RA BXS066, BXS071, BXS076  
 HP BXS067, BXS072, BXS077  
 FG/RA BXS068, BXS073, BXS078



**48 Hole - Plastic Stand**

Polypropylene. Autoclavable up to 134°C. Each.  
 Small BXS203



**12 Hole - Plastic**

With Lid. Autoclavable to 134°C (except lids). Each.  
 FG BXS055  
 RA BXS056  
 HP BXS057  
 FG/RA BXS058



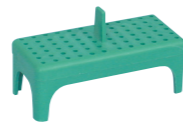
**24 Hole - Plastic**

With Lid. Autoclavable to 134°C (except lids). Each.  
 FG BXS060  
 RA BXS061  
 HP BXS062  
 FG/RA BXS063



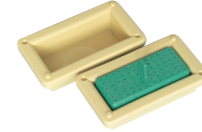
**43 Hole - Magnetic Bur Holder**

Non autoclavable. Blue, White or Red. Each.  
 BXS040, BXS041, BXS042



**72 Hole - Plastic Stand**

Polypropylene. Autoclavable up to 134°C. Each.  
 FG BXS205  
 RA BXS206



**72 Hole - Plastic**

Polypropylene. Autoclavable up to 134°C. Each.  
 FG BXS201  
 RA BXS202



**Metal Etched Stand**

Autoclavable. Aluminium. Each.  
 BXU001



**112 Hole - Plexiglass**

Not Autoclavable. Each.  
 FG BXS198



**Bur Disinfecting Box**

White plastic. Each.  
 BXU010

# Bur Brushes



**Pencil Type - Disposable**

Non Autoclavable. Each.  
 BXB007



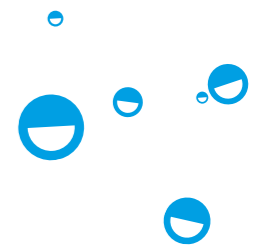
**Pencil Type - Autoclavable**

Autoclavable. Each.  
 BXB008



**Brush Type - Disposable**

Non Autoclavable. Each.  
 BXB009





# Restoratives

[Click the product codes to view more information](#)

## Excavators



### 121/122 DE

Octagonal handle. Each.  
DEN154



### 125/126 DE

Round or Octagonal handle. Each.  
DEN110, DEN150, DEN156



### 129/130 DE

Round or Octagonal handle. Each.  
DEN113, DEN152, DEN158



### 123/124 DE

Octagonal handle. Each.  
DEN108, DEN155



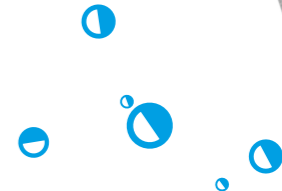
### 127/128 DE

Round or Octagonal handle. Each.  
DEN111, DEN151, DEN157



### 131/132 DE

Round or Octagonal handle. Each.  
DEN114, DEN153, DEN159





# Excavators



## 133/134 DE

Octagonal handle. Each.  
DEN160



## 153/154 DE

Octagonal handle. Each.  
DEN116, DEN161



## 157/158 DE

Octagonal handle. Each.  
DEN122



## 145/146 DE

Octagonal handle. Each.  
DEN115



## 155/156 DE

Octagonal handle. Each.  
DEN119



## 159/160 DE

Octagonal handle. Each.  
DEN123



## 125/126 - Single use

Pack 10.  
DIE125

# Plastic Filling Instruments



## 1 Flat Plastic DE

Octagonal handle. Each.  
DPF101, DPF361



## 6 Flat Plastic DE

Round or Octagonal handle. Each.  
DPF106, DPF360



## 49 Flat Plastic DE

Octagonal handle. Each.  
DPF125, DPF352, DPF363



## 178 Flat Plastic DE

Octagonal handle. Each.  
DPF368



## 153 Plugger DE

Octagonal handle. Each.  
DPF130, DPF364



## 2 Flat Plastic DE

Octagonal handle. Each.  
DPF370



## 18 Flat Plastic DE

Octagonal handle. Each.  
DPF362



## 156 Flat Plastic DE

Round or Octagonal handle. Each.  
DPF136, DPF356, DPF367



## 179 Flat Plastic DE

Round or Octagonal handle. Each.  
DPF160, DPF358, DPF369



## 154 Plugger DE

Octagonal handle. Each.  
DPF132, DPF365

# Plastic Filling Instruments



**1L Burnisher DE**  
Round or Octagonal handle. Each.  
DBU110, DBU151, DBU161



**18 Burnisher DE**  
Round or Octagonal handle. Each.  
DPF118, DPF350



**2 Burnisher Thymozin SE**  
Octagonal handle. Each.  
DPF192



**PF10 Burnisher DE**  
Octagonal handle. Each.  
DPF110



**1/2 Blacks Amalgam Plugger**  
Octagonal handle. Each.  
DPL112, DPL121



**1 Burnisher DE**  
Round or Octagonal handle. Each.  
DBU105, DBU150, DBU160



**155 Burnisher DE**  
Round or Octagonal handle. Each.  
DPF134, DPF354, DPF366



**3 Burnisher Thymozin SE**  
Octagonal handle. Each.  
DPF193



**0/1 Blacks Amalgam Plugger**  
Octagonal handle. Each.  
DPL111, DPL120



**PFI-6 - Single use**  
Pack 10.  
DIP106



**155 Burnisher Single use**  
Pack 10.  
DIP155



**154 Plugger - Single use**  
Pack 10.  
DIP154



**PFI-156 Plugger - Single use**  
Pack 10.  
DIP156



# Composite Instruments



**1/2 Blacks Amalgam Plugger**  
Silicone handle. Each.  
DPL114



**1L Burnisher DE**  
Silicone handle. Each.  
DBU111



**6 Plastic DE**  
Silicone handle. Each.  
DPF107



**155 Plastic DE**  
Silicone handle. Each.  
DPF135



**179 Plastic DE**  
Silicone handle. Each.  
DPF161



**1 Burnisher DE**  
Silicone handle. Each.  
DBU106



**1 Plastic DE**  
Silicone handle. Each.  
DPF102



**49 Plastic DE**  
Silicone handle. Each.  
DPF126



**178 Plastic DE**  
Silicone handle. Each.  
DPF159



**Plastic Assortment**  
Pack 5.  
DCO600

# Carvers



**Le Cron's DE**  
Round handle. Each.  
DCC150



**2 Wards DE**  
Octagonal or Round Handle. Each.  
DCC185, DCC192, DCC194



**3-1/2 Hollenbach DE**  
Octagonal or Round Handle. Each.  
DCC130, DCC196, DCC208



**2 Wards DE**  
Single use. Pack 10.  
DIC102



**1 Wards DE**  
Round or Octagonal handle. Each.  
DCC180, DCC191, DCC193



**3 Hollenbach DE**  
Octagonal or Round Handle. Each.  
DCC125, DCC195, DCC207



**4 Osteo-Mitchell DE**  
Octagonal or Round Handle. Each.  
DCC170, DCC198, DCC197



# Bonds & Accessories



**Unolux Mono Bond Kit**  
Light-curing single component adhesive for enamel. Requires no mixing. 3 x 3ml and accessories.  
FBD086



**Unolux Dual Bond Resin**  
Dual-cure universal bond for enamel and dentine. Consists of a resin and liquid which are mixed together. Light-cures in 30 seconds/self cures in 5 minutes. 3 x 3ml.  
FBD082



Best Seller

**UnoBond 5**  
5th Generation Bonding Adhesive Light-Curing Bonding Adhesive. 3ml or 5ml.  
FBD800, FBD801



**UnoBond 6**  
6th Generation Bonding Adhesive. A two-step light curable bonding system consisting of a primer and bonding agent. 2 x 5ml.  
FBD810



**40% Etchant Gel**  
Aqueous Phosphoric Acid. 5ml Syringe.  
FBG800



**UnoBond 7**  
7th Generation Bonding Adhesive Light-Cure Self-Etching Dental Adhesive. A one step self-etching bonding agent. 6ml.  
FBD820



**Etch Gel Syringe Kit**  
Blue etching gel. 37% Phosphoric acid gel. Thixotropic. 12g syringe and 20 Syringe Tips.  
FBG700



**Bond Brushes**  
Clear or Red. Pack 100.  
FBX003, FBX004



**Bond Application Set**  
1 Holder & 100 Clear Brushes.  
FBX005



**Disposable Micro Applicator Brushes**  
Fine - Mauve or Yellow. Regular - Blue, Green, Orange or Purple. Pack 400.  
FBX201 - FBX206



**Bendable Applicator Brushes**  
Flexible heads. Contains 72 red brushes and 72 blue brushes - 144 total. Single use.  
FBX011



**Dappens Pot - Glass**  
Clear. Autoclavable to 121°C. Each.  
YMD009



**Disposable Dappen Dishes**  
White or Assorted Colours. Pack 200.  
YMD050, YMD055



**Dappens Pots - Flexible**  
Eves Type. Small. Autoclavable to 200°C. Set of 3.  
YMD035



**Mouth Prop**  
Silicone rubber. Latex-free. Each with safety chain. Small Yellow, Medium Blue, Orange Large or Assorted.  
SRU010 - SRU040



**Code Rings**  
Medical grade silicone. Autoclavable. Latex free.  
**4mm**  
Assorted Colours. Box 400.  
GIX110

Blue, Brown, Green, Grey, Orange, White, Yellow, Black or Red. Box 50.  
GIX115 - GIX155

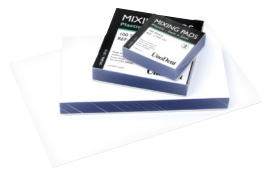
**6mm**  
Light Blue, Green, White, Black, Yellow, Red or Orange. Box 50.  
GIX160 - GIX190



**Tottle Clips**  
For Hand Disinfectant Rub. Pack 6.  
GXC255



# Mixing Pads



## Poly Mixing Pads

Thickness 1.1 mm 100 sheets per pad. Single use. 5cm x 5cm.

CTM101

8cm x 8cm.

CTM102

14cm x 8cm.

CTM103

(Bayer type). For impression materials, etc.

Large 20.4 x 15.3cm

CTB015



## Non-Slip Mixing Pad

12.5cm x 18cm  
25 sheets per pad

CTC051

7cm x 9.5cm

60 sheets per pad

CTM051

7.5cm x 7.5cm

60 sheets per pad

CTP011

15cm x 24cm

35 sheets per pad

CTM052



## Poly Mixing Pad Impregum Type

27 sheets per pad. Single use. 19 x 12.5cm.

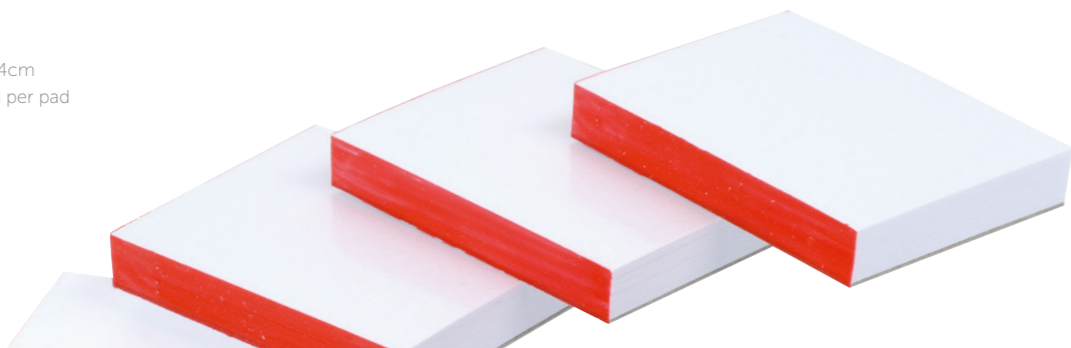
CTC050



## Mixing Pads for Dycal, Life

3.5cm x 4.5cm  
40 sheets per pad

CTD021



# Flowables



## Nano-Ceramic Flow

A flowable, light-curing filling material suitable for anterior and posterior teeth based on Nano-Ceramic fillers. A1, A2, A3 or A3.5 Syringes. 1.8g.

FLU421 - FLU424



## Unolux BCS Flow

Flowable, light-curing radiopaque glass-ceramic micro-hybrid composite for anterior and posterior teeth. A2, A3 or A3.5 Syringe. 3g.

FLU710, FLU711, FLU712



## Unolux BCS Flow Intra-oral Tips

Also suitable for UnoDent Nano-Ceramic LC Flow.

Pack 100.

FLU723



## Luminos HF

Flowable Light Cure Restorative Composite. Syringes. A1, A2, A3, A3.5, A4, B1, B2, B3, C2, BW, A2O, A3O. 2g.

FLU860 - FLU866



## Luminos ZF

Zero Flow Composite Flowable Injectable Hybrid Restorative Material. Syringes. A1, A2, A3, A3.5, A4, B2, A1O, A2O, INC. 2g.

FLU870 - FLU878



# Composites & Compomers



## Luminos UN

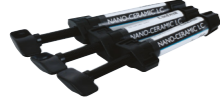
Universal Light-Cure Restorative Composite. Advanced fluoride-containing nano hybrid composite.

Capsules. A1, A2, A3, A3.5, A4, B1, B2, B3, C2, BW, A2O, A3O, INC. 20 x 0.25g.

FLU830 - FLU840

Syringes. A1, A2, A3, A3.5, A4, B1, B2, B3, C2, BW, A2O, A3O. 4g.

FLU810 - FLU820, FLU841



## Nano-Ceramic LC Syringes

Light-curing filling material based on Nano-Ceramic fillers.

A2 Syringes. 4g.

FLU402

A3 Syringes. 4g.

FLU403

A3.5 Syringes. 4g.

FLU404



## Nano-Ceramic LC Capsules

Light-curing filling material based on Nano-Ceramic fillers.

A2 Capsules. 20 x 0.25g.

FLU412

A3 Capsules. 20 x 0.25g.

FLU413



Best Seller



## Compomer LC Capsules

Universal light-curing compomer restorative material for filling cavities in both anterior and posterior areas.

A2, A3, A3.5. 20 x 0.25g.

FGC002, FGC004, FGC006



## Unolux BCS Syringes

Light-curing glass-ceramic micro-hybrid composite for all cavity classes.

Syringe Kit. 7 x 4g syringes 1 of each shade: A2, A3, A3.5, B2, B3, C2 and UO.

FLU650

Syringes.

A1, A2, A3, A3.5, B2, B3, C2, UO. 4g.

FLU660, FLU661, FLU662, FLU663, FLU665, FLU666, FLU667, FLU669



## Unolux BCS Capsules

Light-curing glass-ceramic micro-hybrid composite for all cavity classes.

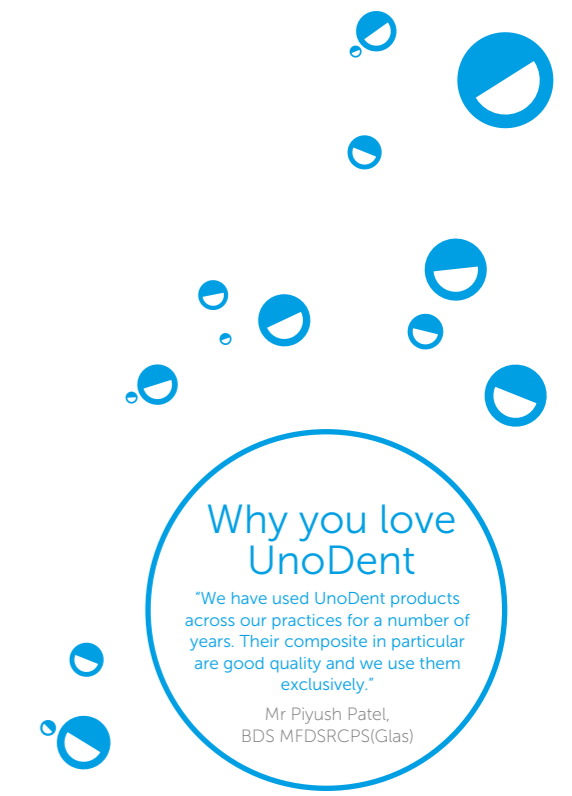
Capsule Kit. 40 x 0.25g capsules (10 of each A2, A3 & A3.5, 5 of each B2 & B3).

FLU680

Capsules

A1, A2, A3, A3.5, B2 & B3. 25 x 0.25g.

FLU690, FLU691, FLU692, FLU693, FLU695, FLU696



## Why you love UnoDent

"We have used UnoDent products across our practices for a number of years. Their composite in particular are good quality and we use them exclusively."

Mr Piyush Patel,  
BDS MFDSRCP(S)(Glas)

# Bulk Fill Composites



## Luminos BN

Bulk Fill Nano Hybrid Composite Advanced fluoride-containing nano hybrid composite.

Syringes. Universal, A. 4g.  
FLU850, FLU851



## Luminos BF

Bulk Fill Flowable Composite Advanced fluoride-containing flowable composite.

Syringes. Universal, Dentine. 2g.  
FLU880, FLU881



# Composite Accessories



## Composite Compu Gun Blue

Autoclavable to 134°C.  
FAX661



## Composite Compu Gun Purple

Autoclavable to 134°C  
FAX662



## Composite Brush Kit

6 Handles & 400 Brushes.  
FBX000



## Composite Spatula

Bag 100.  
DSP512



## Composite Compu Gun Light Grey

Autoclavable to 134°C.  
FAX660



## Unlux BCS Shade Guide

For colour matching teeth with restoration material.  
FXS002



## Composite Spatula - Disposable

Pack 10.  
DSP520, DSP522

# Glass Ionomers & Temporary Cements



## Aesthetic Restorative

A fast setting, high strength glass ionomer restorative with excellent aesthetics.

### Powder/Liquid Kit

15g Powder and 6ml Liquid.

FGU002

### Powder

A2 - 15g FGU004  
 A3 - 15g FGU006  
 A3.5 - 15g FGU008

### Liquid

6ml FGU012



## Aqua-Fil Introductory Kit

A fast-setting glass ionomer restorative activated by mixing with water.

### Anterior Introductory Kit

1x 10g No.2 - Light Yellow.  
 1x 10g No.3 - Universal.  
 1x 10g No.4 - Light Grey.  
 1x 10g No.5 - Yellow Brown  
 1x 10g No.7 - Yellow Grey  
 1x 10ml Tooth Cleanser.  
 Water Dispensing Bottle.  
 Powder Scoop. Shade Guide.  
 FGF601



## Aqua-Fil - 10g Bottle

A fast-setting glass ionomer restorative activated by mixing with water. Adheres directly to enamel, dentine, cementum and set amalgam. 10g Bottle

No.4 - Light Grey FGF648  
 No.5 - Yellow Brown FGF660  
 No.7 - Yellow Grey FGF662  
 No.8 - Brown FGF666



## Aqua-Fil Tooth Cleanser

Removes the salivary pellicle or smear layer on uncut or contaminated tooth surfaces prior to placing a glass ionomer restorative. 10ml.

FGF670



## Aqua-Silver

Silver reinforced glass ionomer. Easy to mix, activated by mixing with water. 10g.

FGF610



## Temporary Luting Cement

A single paste temporary luting cement. For fixing temporary dental crowns or bridges. 3 x 2.8g syringe, 9 x tips.

TNU015



## 3 DE Cement Spatula

Autoclavable. Each.  
 DSP113, DSP115



## Cavity Temporary Cement

Ready to use, rapid setting temporary filling material.

Tubes 4 x 8g. TEB004

Pot 30g. TEB006



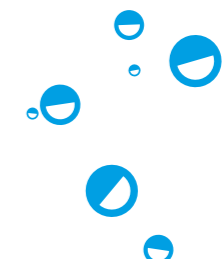
## 8 DE Cement Spatula

Autoclavable. Each.  
 DSP114, DSP116



## 8 DE Cement Spatula - Single Use.

Each.  
 DIS000, DIS005





# Articulating Paper



**Articulation Paper Thin**  
Blue/Blue. 0.00125 in / 71 Microns. 12 x 12 sheets.  
ITU001



**Articulation Paper Thick**  
0.005 in / 127 Microns. 12 x 12 sheets.  
ITU002



**Ready Foil**  
Blue. 8 microns. Pack 100 or 500.  
ITU011, ITU010

Red. 8 microns. Pack 100 or 500.  
ITU013, ITU012



**Articulation Paper Combi**  
Red/Blue. 0.0028 in / 71 Microns. 12 x 12 sheets.  
ITU003



**Articulation Paper Horseshoe**  
Red/Blue. 0.0035 in / 89 Microns. 6 x 12 sheets.  
ITU004



**Forceps**  
Autoclavable Miller. Each.  
DFO219



# Amalgam



**Unoloy 44.4**  
High Copper Non-Gamma Two, Zinc-Free. A mixture of irregular (atomised) and lathe cut particles. Contains: 44.5% Silver, 25.5% Copper, 30% Tin. 500 Caps.

1 Spill - Regular	FAF170
2 Spill - Regular	FAF171
3 Spill - Regular	FAF172



**Unoloy 44.5**  
High Copper Non-Gamma Two, Zinc-Free. A mixture of irregular (atomised) and lathe cut particles. Contains: 44.5% Silver, 25.5% Copper, 30% Tin. 50 Caps.

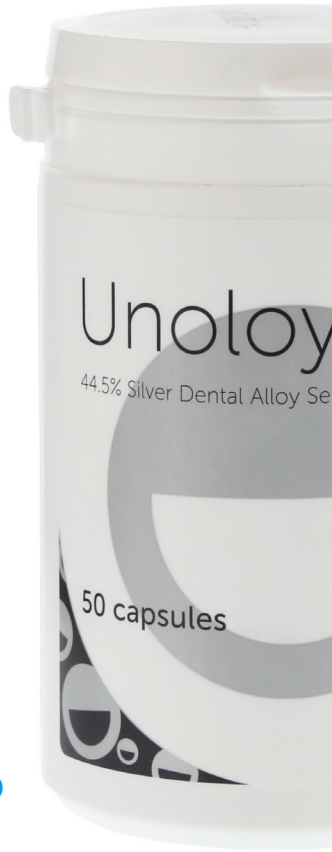
1 Spill - Regular	FAF150
2 Spill - Regular	FAF151
3 Spill - Regular	FAF152



**Unoloy LM80**  
Reduced mercury dental alloy capsules. Liquid atomised with liquid irregular (atomised) shaped particles. Contains: 40% Silver, 29% Copper, 31% Tin. 50 Caps.

1 Spill - Regular	FAF190
2 Spill - Regular	FAF191
3 Spill - Regular	FAF192

1 Spill - Fast	FAF195
2 Spill - Fast	FAF196
3 Spill - Fast	FAF197



# Amalgam Carriers



**Curved Plastic RA**  
Autoclavable to 134°C. Each.  
FAX350



**Amalgam Gun Spring**  
Autoclavable to 134°C. Each.  
FAX380



**Curved Plastic RA Tips**  
Autoclavable to 134°C.  
Each.  
FAX360



**Straight - Single use**  
Pack 10.  
FAX460



**Amalgam Carrier Straight**  
Autoclavable. Each.  
FAX600



**Straight Plastic**  
Autoclavable to 134°C. Each.  
FAX355



**Stainless Steel Carrier**  
Reg/Large or Reg/Jumbo.  
Autoclavable. Each.  
FAX390, FAX395



**Metal Gun 10a Type**  
Each.  
FAX401



**RA Single-use**  
Pack 10.  
FAX465



**Amalgam Carrier Nozzles - Straight**  
Autoclavable. Each.  
FAX601



**Amalgam Carrier 45°**  
Autoclavable. Each.  
FAX610



**Amalgam Carrier 90°**  
Autoclavable. Each.  
FAX620



**Amalgam Well**  
Light Grey, Blue or Purple  
FAX650 - FAX652



**Amalgam Carrier Nozzles - 45°**  
Autoclavable. Each.  
FAX611



**Amalgam Carrier Nozzles - 90°**  
Autoclavable. Each.  
FAX621



**Retrograde Amalgam Gun RA**  
Each.  
FAX001





# Matrix

[Click the product codes to view more information](#)

## Matrix Bands & Retainers



### Siqveland Bands

Narrow or Wide. Stainless Steel. Pack 12.

MPS110, MPS115



### Siqveland Retainers

Narrow or Wide. Stainless Steel. Each.

MPS105 - MPS108



### Tofflemire

Thin (.002"). Available in Adult (1,2,3) or Child (13,14,15)

MPT101 - MPT115



### Siqveland Band - Bulk Packs

Narrow or Wide. Stainless Steel. Pack 200.

MPS200, MPS205



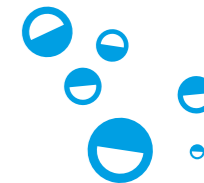
### Tofflemire Retainers

Universal. Stainless Steel. Each.

MPT100

Ultra Thin (.0015"). Available in Adult (1,2,3) or Child (13,14)

MPT120 - MPT142





# Polishing

[Click the product codes to view more information](#)

## Polishing



**Bullet Smoother – Medium**  
Light Blue. Pack 6.  
KUD106



**Bullet Trimmer – Coarse**  
Dark Blue. Pack 6.  
KUD110



**Point Silicone Smoother – Medium**  
Light Blue. Pack 6.  
KUD104



**Point Trimmer – Coarse**  
Dark Blue. Pack 6.  
KUD108



**Silicone Cone Polishes**  
Grey. Medium grit. Pack 6.  
KUO004



**Bullet Polisher - Fine cut**  
Yellow. Pack 6.  
KUO003



**Silicone Flame Polisher - Medium**  
Grey. Pack 6.  
KUO005



**Point Polisher**  
Yellow. Pack 6.  
KUD112



**Silicone Polishes**  
Yellow, Grey Pack 6.  
KUD102, KUD100



**Silicone Polishing Wheel Coarse**  
Pack 12.  
KUO002

# Polishing



**Bullet Trimmer TC**  
Standard, Super Coarse,  
Round End Super Fine.  
Each.  
KUO006 - KUO008



**Acrylic Polishing HP Kit**  
2 smoothers (light blue), 2  
trimmers (blue) & 2 polishers  
(yellow).  
KUD005



**Diamond Polishing  
Paste**  
A polishing paste which  
restores ground porcelain,  
composite and tooth  
surfaces to a high polish in  
minutes.



**Soft Relining  
Polishing Kit**  
10 Grinding discs, 1 mandrel  
& 1 TC Cutter Soft  
KUD010



**HP Ceramic Kit**  
4 wheels & 4 points.  
KUL000

**Triple Pack**  
2g of each Extra Fine, Fine  
and Regular.  
KWD005

**2g Refills**  
Extra Fine, Fine or Regular.  
KWD010 - KWD020



# Mandrels



**302 Latch RA**  
Each.  
BYD302



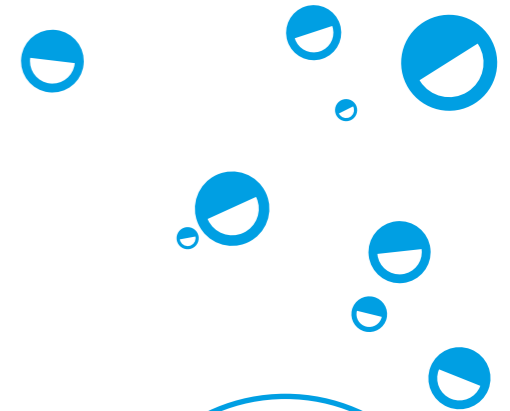
**303 HP**  
Each.  
BYD303



**334 RA Moore Latch**  
Each.  
BYM010



**305 Moore HP**  
Each.  
BYM020



Why you love  
UnoDent  
"Their tools give a high end finish"



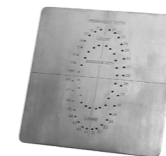
# Endodontics

[Click the product codes to view more information](#)

## Rubber Dams and Accessories



**Latex Rubber Dam Squares Thin**  
Latex. 6" x 6". Thin, Medium, Heavy or Extra Heavy.  
EWS005, EWS020



**Rubber Dam Template**  
Stainless steel. For 6" x 6" rubber dam.  
EWC950



**Rubber Dam Forceps - Stokes**  
Autoclavable.  
EWF010



**Rubber Dam Forceps - Brewer Type**  
Autoclavable.  
EWF250



**Rubber Dam Frame Youngs - Metal**  
Autoclavable.  
EWR010



**Non-Latex Rubber Dam Squares**  
Non-Latex. Heavy or Medium.  
EWS045, EWS025



**Rubber Dam Clamp Sterilising Tray**  
Storage system during cleaning and sterilisation.  
EWC951



**Rubber Dam Forceps - Hygienic**  
Autoclavable.  
EWF015



**Rubber Dam Punch Ainsworth**  
Autoclavable.  
EWP010



**Rubber Dam Frame Plastic U-Shape**  
Autoclavable.  
EWR215

# Rubber Dam Clamps



**A**  
Each clamp is type-marked and individually boxed. Fully Autoclavable.  
EWC900



**AW**  
Each clamp is type-marked and individually boxed. Fully Autoclavable.  
EWC902



**BW**  
Each clamp is type-marked and individually boxed. Fully Autoclavable.  
EWC904



**DW**  
Each clamp is type-marked and individually boxed. Fully Autoclavable.  
EWC908



**EW**  
Each clamp is type-marked and individually boxed. Fully Autoclavable.  
EWC912



**L**  
Each clamp is type-marked and individually boxed. Fully Autoclavable.  
EWC926



**NW**  
Each clamp is type-marked and individually boxed. Fully Autoclavable.  
EWC928



**PW**  
Each clamp is type-marked and individually boxed. Fully Autoclavable.  
EWC930



**M**  
Each clamp is type-marked and individually boxed. Fully Autoclavable.  
EWC932



**G**  
Each clamp is type-marked and individually boxed. Fully Autoclavable.  
EWC916



**GW**  
Each clamp is type-marked and individually boxed. Fully Autoclavable.  
EWC918



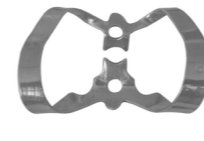
**HW**  
Each clamp is type-marked and individually boxed. Fully Autoclavable.  
EWC920



**JW**  
Each clamp is type-marked and individually boxed. Fully Autoclavable.  
EWC922



**K**  
Each clamp is type-marked and individually boxed. Fully Autoclavable.  
EWC924



**C**  
Each clamp is type-marked and individually boxed. Fully Autoclavable.  
EWC906



**E**  
Each clamp is type-marked and individually boxed. Fully Autoclavable.  
EWC910



**FW**  
Each clamp is type-marked and individually boxed. Fully Autoclavable.  
EWC914

# Endodontic Hand Instruments



SS  
Reamers

NiTi  
Reamers

Hand K  
Reamers

K  
Reamers

Size	21mm	25mm	28mm	31mm	21mm	25mm	28mm	31mm	21mm	35mm	21mm	25mm
8	-	-	-	-	-	-	-	-	EMU108	EMU508	-	-
10	EGU720	EGU735	EGU750	EGU765	EGU780	EGU788	EGU796	EGU804	-	-	-	-
15	EGU721	EGU736	EGU751	EGU766	EGU781	EGU789	EGU797	EGU805	-	-	-	-
20	EGU722	EGU737	EGU752	EGU767	EGU782	EGU790	EGU798	EGU806	-	-	-	-
25	EGU723	EGU738	EGU753	EGU768	EGU783	EGU791	EGU799	EGU807	-	-	ELU125	ELU520
30	EGU724	EGU739	EGU754	EGU769	EGU784	EGU792	EGU800	EGU808	-	-	ELU130	ELU530
35	EGU725	EGU740	EGU755	EGU770	EGU785	EGU793	EGU801	EGU809	-	-	ELU135	-
40	EGU726	EGU741	EGU756	EGU771	EGU786	EGU794	EGU802	EGU810	-	-	ELU140	-
45	EGU727	EGU742	EGU757	EGU772	-	-	-	-	-	-	-	-
50	EGU728	EGU743	EGU758	EGU773	-	-	-	-	-	-	-	-
55	EGU729	EGU744	EGU759	EGU774	-	-	-	-	-	-	-	-
60	EGU730	EGU745	EGU760	EGU775	-	-	-	-	-	-	-	-
70	EGU731	EGU746	EGU761	EGU776	-	-	-	-	-	-	-	-
80	EGU732	EGU747	EGU762	EGU777	-	-	-	-	-	-	-	-
15-40	EGU733	EGU748	EGU763	EGU778	-	-	EGU803	EGU811	-	-	ELU101	ELU501
45-80	EGU734	EGU749	EGU764	EGU779	EGU787	EGU795	-	-	-	-	-	ELU505

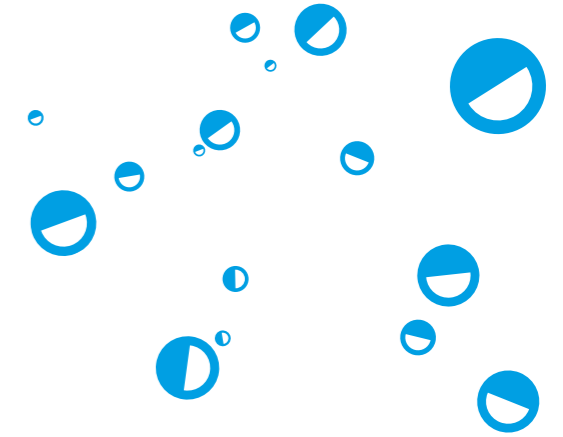


Peeso  
Reamers

Barbed  
Broach

Gates  
Glidden

Size	28mm	32mm	25mm	One Size	
No.0	-	-	EGU870	-	-
No.1	EGU820	EGU827	EGU871	-	EGU845
No.2	EGU821	EGU828	EGU872	-	EGU846
No.3	EGU822	EGU829	EGU873	-	EGU847
No.4	EGU823	EGU830	EGU874	-	EGU848
No.5	EGU824	EGU831	EGU875	-	EGU849
No.6	EGU825	EGU832	EGU876	-	EGU850
No.1-6	-	EGU833	-	-	EGU851
Assorted	EGU826	-	-	-	-



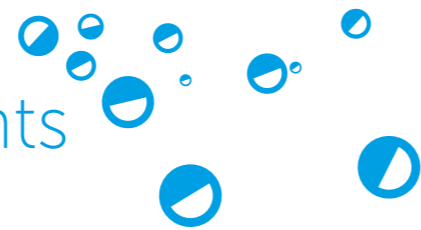
Why you love  
UnoDent

"They have an extensive range  
of quality hand instruments that  
offer a great level of precision"



# Endodontic Hand Instruments

## Files



Size	NiTi S Files		S Files			SS K Files				Sterile NiTi K Files			
	21mm	25mm	21mm	25mm	28mm	21mm	25mm	28mm	31mm	21mm	25mm	28mm	31mm
8	-	-	EOU308	EOU608	EOU908	EGU200	EGU211	EGU222	EGU233	EGU270	EGU286	EGU302	EOU318
10	-	-	EOU310	EOU610	EOU910	EGU201	EGU212	EGU223	EGU234	EGU271	EGU287	EGU303	EOU319
15	EOU115	EOU015	EOU315	EOU615	EOU915	EGU202	EGU213	EGU224	EGU235	EGU272	EGU288	EGU304	EOU320
20	EOU120	EOU020	EOU320	EOU620	EOU920	EGU203	EGU214	EGU225	EGU236	EGU273	EGU289	EGU305	EOU321
25	EOU125	EOU025	EOU325	EOU625	EOU925	EGU204	EGU215	EGU226	EGU237	EGU274	EGU290	EGU306	EOU322
30	EOU130	EOU030	EOU330	EOU630	-	EGU205	EGU216	EGU227	EGU238	EGU275	EGU291	EGU307	EOU323
35	EOU135	EOU035	EOU335	EOU635	EOU935	EGU206	EGU217	EGU228	EGU239	EGU276	EGU292	EGU308	EOU324
40	-	EOU040	EOU340	EOU640	EOU940	EGU207	EGU218	EGU229	EGU240	EGU277	EGU293	EGU309	EOU325
45	-	-	EOU345	EOU645	EOU945	EGU208	EGU219	EGU230	EGU241	EGU278	EGU294	EGU310	EOU326
50	EOU150	EOU050	EOU350	EOU650	EOU950	-	-	-	-	EGU279	EGU295	EGU311	EOU327
55	EOU155	-	EOU355	EOU655	EOU955	-	-	-	-	EGU280	EGU296	EGU312	EOU328
60	EOU160	EOU060	EOU360	EOU660	EOU960	-	-	-	-	EGU281	EGU297	EGU313	EOU329
70	EOU170	EOU070	EOU370	EOU670	EOU970	-	-	-	-	EGU282	EGU298	EGU314	EOU330
80	EOU180	EOU080	EOU380	EOU680	EOU980	-	-	-	-	EGU283	EGU299	EGU315	EOU331
15-40	EOU101	EOU001	EOU301	EOU601	-	EGU209	EGU220	EGU231	EGU242	EGU284	EGU300	EGU316	EOU332
45-80	-	EOU005	EOU305	EOU605	EOU905	EGU210	EGU221	EGU232	EGU243	EGU285	EGU301	EGU317	EOU333



Size	Hedstrom Files			SS Hedstrom Files				NiTi Hedstrom Files				NiTi S Files RA	
	21mm	25mm	28mm	21mm	25mm	28mm	31mm	21mm	25mm	28mm	31mm	21mm	25mm
8	EHU108	EHU508	EHU808	-	-	-	-	EGU400	EGU416	EGU432	EGU448	-	-
10	-	-	-	EGU350	EGU358	EGU366	EGU374	EGU401	EGU417	EGU433	EGU449	-	-
15	-	-	-	EGU351	EGU359	EGU367	EGU375	EGU402	EGU418	EGU434	EGU450	-	-
20	-	-	-	EGU352	EGU360	EGU368	EGU376	EGU403	EGU419	EGU435	EGU451	-	-
25	-	-	-	EGU353	EGU361	EGU369	EGU377	EGU404	EGU420	EGU436	EGU452	-	-
30	-	-	-	EGU354	EGU362	EGU370	EGU378	EGU405	EGU421	EGU437	EGU453	-	-
35	-	-	-	EGU355	EGU363	EGU371	EGU379	EGU406	EGU422	EGU438	EGU454	-	-
40	-	-	-	EGU356	EGU364	EGU372	EGU380	EGU407	EGU423	EGU439	EGU455	EOU440	-
45	EHU145	EHU545	EHU845	-	-	-	-	EGU408	EGU424	EGU440	EGU456	EOU445	EOU745
50	EHU150	EHU550	EHU850	-	-	-	-	EGU409	EGU425	EGU441	EGU457	-	EOU750
55	EHU155	EHU555	EHU855	-	-	-	-	EGU410	EGU426	EGU442	EGU458	EOU455	EOU755
60	EHU160	EHU560	EHU860	-	-	-	-	EGU411	EGU427	EGU443	EGU459	EOU460	EOU760
70	EHU170	EHU570	EHU870	-	-	-	-	EGU412	EGU428	EGU444	EGU460	EOU470	-
80	-	EHU580	EHU880	-	-	-	-	EGU413	EGU429	EGU445	EGU461	EOU480	EOU780
15-40	-	-	-	EGU357	EGU365	EGU373	EGU381	EGU414	EGU430	EGU446	EGU462	-	-
45-80	EHU105	EHU505	EHU805	-	-	-	-	EGU415	EGU431	EGU447	EGU463	-	-

# Endodontic Hand Instruments

## Spreaders

## Fillers

## Pluggers



Sterile NiTi  
Spreaders

Paste  
Fillers

Paste Fillers  
+ Springs

Sterile NiTi  
Pluggers

Finger  
Pluggers

Size	Sterile NiTi Spreaders				Paste Fillers				Sterile NiTi Pluggers				Finger Pluggers
	21mm	25mm	28mm	31mm	21mm	25mm	21mm	25mm	21mm	25mm	28mm	31mm	25mm
8	-	-	-	-	-	-	-	-	-	-	-	-	-
10	-	-	-	-	-	-	-	-	-	-	-	-	-
15	EGU680	EGU687	EGU694	EGU701	-	-	-	-	EGU640	EGU647	EGU654	EGU661	-
20	EGU681	EGU688	EGU695	EGU702	-	-	-	-	EGU641	EGU648	EGU655	EGU662	EUU520
25	EGU682	EGU689	EGU696	EGU703	ECU125	ECU525	ECU225	ECU625	EGU642	EGU649	EGU656	EGU663	EUU530
30	EGU683	EGU690	EGU697	EGU704	ECU130	ECU530	ECU230	ECU630	EGU643	EGU650	EGU657	EGU664	-
35	EGU684	EGU691	EGU698	EGU705	ECU135	ECU535	ECU235	ECU635	EGU644	EGU651	EGU658	EGU665	EUU540
40	EGU685	EGU692	EGU699	EGU706	ECU140	ECU540	ECU240	ECU640	EGU645	EGU652	EGU659	EGU666	-
45	-	-	-	-	-	-	-	-	-	-	-	-	-
50	-	-	-	-	-	-	-	-	-	-	-	-	EUU550
55	-	-	-	-	-	-	-	-	-	-	-	-	-
60	-	-	-	-	-	-	-	-	-	-	-	-	EUU560
70	-	-	-	-	-	-	-	-	-	-	-	-	-
80	-	-	-	-	-	-	-	-	-	-	-	-	EUU580
15-40	EGU686	EGU693	EGU700	EGU707	-	-	-	-	EGU646	EGU653	EGU660	EGU667	-
25-40	-	-	-	-	ECU101	ECU501	ECU201	ECU601	-	-	-	-	EUU501
45-80	-	-	-	-	-	-	-	-	-	-	-	EHU805	-

# Endodontic Points

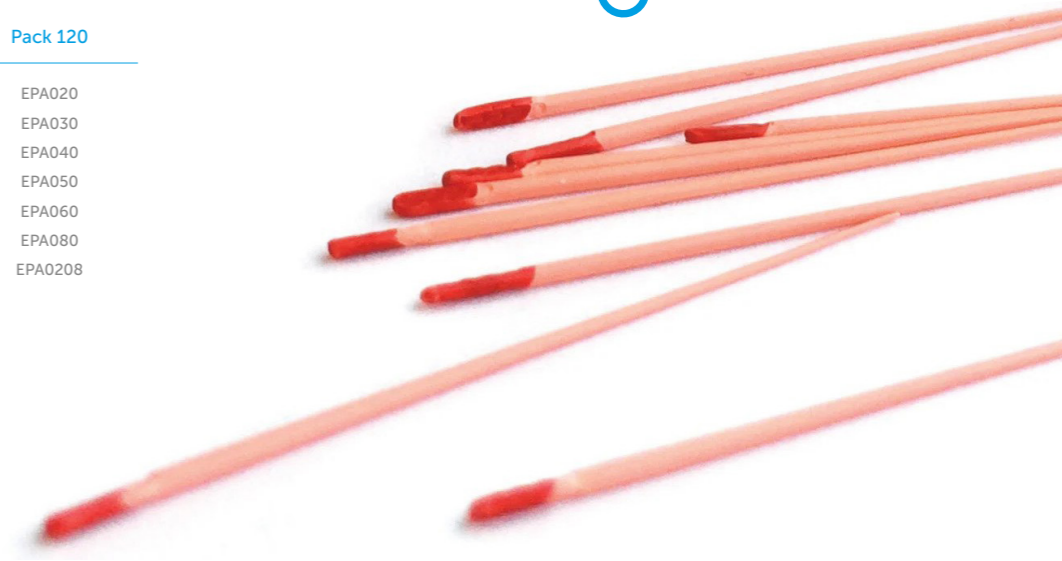
## Gutta Percha

## Paper

Gutta Percha -  
Colour Coded

Paper Points -  
Colour Coded

Size	Pack 120	Size	Pack 120
20	EQQ020	30	EPA030
25	EQQ025	40	EPA040
30	EQQ030	50	EPA050
35	EQQ035	60	EPA060
40	EQQ040	80	EPA080
45	EQQ045	20/80	EPA0208
50	EQQ050		
55	EQQ055		
60	EQQ060		
70	EQQ070		
80	EQQ080		
100	EQQ100		
120	EQQ120		
140	EQQ140		
15/40	EQQ154		
45/80	EQQ458		
90/140	EQQ901		



Find more paper points at [DDGroup.com](http://DDGroup.com)

# Endodontic Organisers & Measuring



## UnoDent Endo Organiser

A plastic storage container for easy identification of point sizes.

With 240 assorted GP Points (Sizes 15 to 80). **EXB029**  
Empty **EXB028**



## Endo Holder - Aluminium Open

Circular holders for root canal instruments. No Sponge. Each.

**EXB554**



## Endo Steri Kit

3 x Autoclavable Supports, 50 x Sponges (0.5cm thick) and 25 x Sponges (1cm thick)

**EXB550**



## Endo Organiser Set

A rectangular endodontic holder for root canal instruments. Holds 16 Endo instruments Complete with endometer measure and 25 sponges.

**EXB020**



## Endo Measure - Rectangular

Rectangular aluminium measure for endodontic points. Autoclavable.

**EXG700**



## Endo Holder - Plastic

Circular holders for root canal instruments. Red, Blue or Green. No Sponge. Each.

**EXB556, EXB557, EXB558**



## Refill Sponges

Refill sponges for the Endo Steri Kit (EXB550) & Endo Clean Holders (EXB554, EXB556, EXB567, EXB558)

0.5cm Thick - **EXB551**  
1cm Thick - **EXB552**



## Mini Endo Box + Lid

Hold 48 instruments.

**EXB060, EXB061**



## Refill Sponges for Endo Organiser Set

Refill sponges for the Endo Organiser Set (EXB020 )

Pack 25.

**EXB022**



## Endo Measuring Ring Kit

Holds root canal instruments and lubricates during procedures. **EXU010**

Refill Inserts. Bag 48. **EXU013**

Refill Sponges. Bag 10. **EXU011**

# Endodontic Tips



## Endo E3

For EMS  
For Satelec

**QSU016**  
**QSU069**



## Endo E4

For EMS  
For NSK

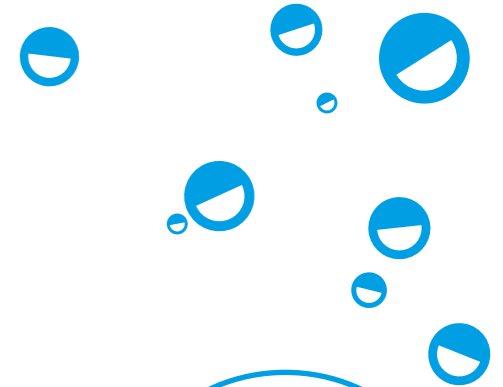
**QSU017**  
**QSU070**



## Endo E2

For EMS

**QSU015**



Why you love UnoDent

"The Endo Instruments are very effective and durable."



# Posts & Cores

[Click the product codes to view more information](#)

## Core Build-up & Screw Posts



**Alpha-Core**  
Powder & Liquid Kit  
FCA001



**UnoCore Tips - Type 3**  
Yellow. Pack 50.  
FCX050



**Screwposts - Short**  
1, 2, 3, 4, 5, 6. Pack 12.  
ROO101 - ROO106



**Screwposts - Long**  
1, 2, 4, 5, 6. Pack 12.  
ROO301 - ROO306



**UnoCore DC**  
Core Build Up Material. 10g.  
FCA020



**UnoCore Mixing Tips**  
Blue. Pack 100.  
FCX051



**Screwposts - Medium**  
4, 5, 6. Pack 12.  
ROO204 - ROO206



**Screwposts - Extra Long**  
4. Pack 12.  
ROO404



# Impression

[Click the product codes to view more information](#)

## Alginate



### Fast Set Alginate

A fast setting, very high precision, dust-free elastic alginate. Vanilla or Mint refill. 500g. IAA300, IAA310



### Exact

Strong, tear-resistant, rapid setting alginate. Mint. Blue. 500g. IAA210



### Alginate Measuring Set 1

For use with Fast Set Alginate Vanilla (IAA300). IAX325



### Alginate Measuring Set 2

For use with Fast Set Alginate Mint (IAA301) and Orthodontic Alginate (IAA315). IAX320



### Spatulas 8X Curved

For Alginate. Unsuitable for use in an autoclave or washer disinfectant. Each. DSP118



### Spatulas - Straight

For Alginate Straight. Ash Type. Each. DSP412



### Flexibowls

Latex free flexible mixing bowls. Not autoclavable. 10cm - D1 YMA005  
11.5cm - D2 YMA010  
14.5cm - D3 YMA015  
16cm - D4 YMA020



### Mixing Spatula

Single use. Each. DSP935



### Stic Adhesive

For alginate impression materials. Spray (CFC Free). 200ml or Paint-on. 30ml. IJA120, IJA100



### Stic-off Tray Cleaner

For alginate impression materials. 200ml. IJS200

# Impression Materials

## Imprep

Our Imprep range gives you excellent detail reproduction and low linear shrinkage, so you can be sure that your impressions are right first time, leaving you with a smile.



**Imprep AC Bite Registration Wash Kit**  
Polyvinyl Siloxane.  
Addition cured hydrophilic polysiloxane.

2 x 50ml cartridges, 6 mixing tips green. Colour: Red.  
ICU108



**Imprep AC Putty**  
Hydrophilic addition cured vinyl polysiloxane impression material with advanced hydrophilic properties.

**Soft Rapid (Fast Set)**  
Dark Blue. 2 x 450g tubs and 2 x mixing spoons.  
ICU105

**Soft (Normal Set)**  
Bright Yellow. 2 x 450g tubs and 2 x mixing spoons.  
ICU107



**Imprep AC Wash**  
Hydrophilic addition cured vinyl polysiloxane impression material.

**Fast Set - Light Body Rapid**  
Orange. 2 x 50ml.  
ICU102

**Normal Set - Regular Body**  
Purple. 2 x 50ml.  
ICU101

**Normal Set - Light Body**  
Bright Green. 2 x 50ml.  
ICU103



**Imprep 2 AC Putty**  
Vinyl polysiloxane impression material.

**Soft Rapid Set**  
2 x 300ml.  
ICU170

**Soft Normal Set**  
2 x 300ml.  
ICU171



**Imprep 2 AC Wash**  
Low viscosity hydrophilic Vinyl polysiloxane.

**Normal Set - Regular Body**  
2 x 50ml. ICU172

**Fast Set - Light Body Rapid**  
2 x 50ml. ICU173

**Normal Set - Light Body**  
2 x 50ml. ICU174

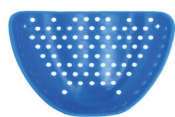
**Bite Registration Wash - Fast Set.** 100ml. ICU175



# Impression Trays

## UnoTrays

Constructed of durable plastic for optimum strength. All our trays are designed to ensure excellent retention of impression material.



### Upper UnoTrays

Plastic. Box 25 and 1 stainless steel handle.

#### Edentulous

3 Large	IIU003
5 Average	IIU005

#### Dentate

11 Large	IIU011
13 Average	IIU013
15 Orthodontic	IIU015
17 Orthodontic	IIU017

### Unotray Handles

Autoclavable. Box 10.  
IIH100



### Lower UnoTrays

Plastic. Box 25 and 1 stainless steel handle.

#### Edentulous

4 Large	IIU004
6 Average	IIU006

#### Dentate

12 Large	IIU012
14 Average	IIU014
16 Orthodontic	IIU016
18 Orthodontic	IIU018



### Upper/Lower

Plastic. Box 25 and 1 stainless steel handle.

#### Sectional

20 Anterior	IIU020
-------------	--------

#### Half

21 Half	IIU021
22 Half	IIU022



### UnoTrays with fixed handle

Plastic. Box 25.

#### Upper

Small	IIU055
Medium	IIU053
Large	IIU051

#### Lower

Small	IIU056
Medium	IIU054
Large	IIU052



### UnoTrays with fixed handle - Upper/Lower

Plastic. Box 25.

#### Sectional

Anterior	IIU059
----------	--------

#### Half

UR/LL	IIU057
UL/LR	IIU058

# Impression Trays

## Stainless Steel

Designed with rimmed margins for excellent retention without adhesive.



### Upper Plain

With Handle. Stainless steel. Autoclavable.

1	IIU201
2	IIU202
3	IIU203
4	IIU204
5	IIU205

Assorted upper / lower pack. 1 of each size.  
IIU200



### Lower Plain

With Handle. Stainless steel. Autoclavable.

1	IIU211
2	IIU212
3	IIU213
4	IIU214
5	IIU215

Assorted upper / lower pack. 1 of each size.  
IIU200



### Upper Perforated

With Handle. Stainless steel. Autoclavable.

1	IIU221
2	IIU222
3	IIU223
4	IIU224
5	IIU225

Assorted upper / lower pack. 1 of each size.  
IIU220



### Lower Perforated

With Handle. Stainless steel. Autoclavable.

1	IIU231
2	IIU232
3	IIU233
4	IIU234
5	IIU235

Assorted upper / lower pack. 1 of each size.  
IIU220



### Upper/Lower Sectional Perforated

With Handle. Stainless steel. Autoclavable.

UL/LR	IIU226
LL/UR	IIU236



# Crown, Bridge & Veneers

Click the product codes to view more information

## Temporary Crown & Veneers



### UnoCore DC Core Build Up

A dual-curing highly radiopaque and fluoride-containing flowable composite with excellent mechanical properties for core build-up.

2 x 5ml twin-barrel AutoMix syringes, 10 x mixing tips, 10 x intra-oral tips.

FCA020



### Temporary Crown Kit

Made from high quality polycarbonate which is resilient to mouth fluids and can be trimmed without risk of damage.

80 assorted crowns (3 of each size) & organiser.

TCS480



### UnoTemp SC

A cold-curing, two paste system with multi-phase polymerisation for temporary crowns & bridges, inlays & onlays.

Shades A1, A2, A3. 50ml.  
TEU010, TEU012, TEU014



### Laminate Veneer Kit

Contains 10 diamond burs.  
Tiger Stripes (0.3 & 0.5mm),  
290/010 (T10), 290/010U/F (T10U), 556,  
546 Long, 557U/F,  
561U/F, 290/012 (T12),  
290/012U/F (T12U).

BD008

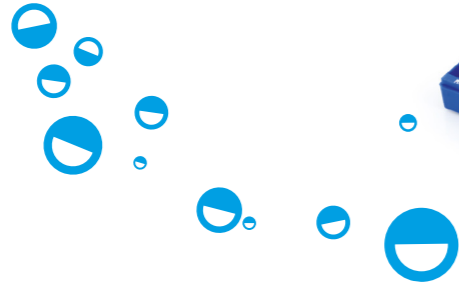
### Why you love UnoDent

"I'm a great fan of Unodent UnoTemp SC temporary crown and bridge material. It sets and polishes well and the shade matches are accurate. The end result can look as good as a permanent crown!"

Dr Gillian Leslie



# Crown Forms



## Clear Crown Forms

	Centrals						Central-Cervical Part Enlarged						Ex-Large Centrals	
Reference	1	11	21	31	41	51	101	111	121	131	141	151	161	171
Left	TCE001	TCE011	TCE021	TCE031	TCE041	TCE051	TCE101	TCE111	TCE121	TCE131	TCE141	TCE151	TCE161	TCE171
Right	TCE301	TCE311	TCE321	TCE331	TCE341	TCE351	TCE401	TCE411	TCE421	TCE431	TCE441	TCE451	TCE461	TCE471

	Laterals					Bi-Cuspids					Canines		
Reference	2	12	22	32	42	4	5	14	15	24	3	13	23
Left	TCE002	TCE012	TCE022	TCE032	TCE042	TCE004	TCE005	TCE014	TCE015	TCE024	TCE003	TCE013	TCE023
Right	TCE302	TCE312	TCE322	TCE332	TCE342	TCE304	TCE305	TCE314	TCE315	TCE324	TCE303	TCE313	TCE323

	Ex-Large Canines		Lower Canines		Molar				Lower Incisors			
Reference	33	43	203	213	6	7	16	17	201	202	211	212
Left	TCE033	TCE043	TCE203	TCE213	TCE006	TCE007	TCE016	TCE017	TCE201	TCE202	TC211	TCE212
Right	TCE333	TCE343	TCE503	TCE513	TCE306	TCE307	TCE316	TCE317	TCE501	TCE502	TCE511	TCE512

# Crown Forms



## Polycarbonate Crowns

Upper Central Incisor							Upper Central Incisor							
Left							Right							
Reference	15	16	17	18	19	102	103	100	101	10	11	12	13	14
Code	TCS015	TCS016	TCS017	TCS018	TCS019	TCS102	TCS103	TCS100	TCS101	TCS010	TCS011	TCS012	TCS013	TCS014

Upper Lateral Incisor							Upper Lateral Incisor						
Left							Right						
Reference	25	26	27	28	29	200	2	20	21	22	23	24	
Code	TCS025	TCS026	TCS027	TCS028	TCS029	TCS200	TCS002	TCS020	TCS021	TCS022	TCS023	TCS024	

Upper Premolars					Lower Premolars						
Reference	40	41	42	43	44	Reference	50	51	52	53	54
Code	TCS040	TCS041	TCS042	TCS0043	TCS044	Code	TCS050	TCS051	TCS052	TCS053	TCS054

Lower Incisors										
Reference	60	61	62	63	64	65	66	67	68	69
Code	TCS060	TCS061	TCS062	TCS063	TCS064	TCS065	TCS066	TCS067	TCS068	TCS069

Upper Canines							Upper Canines							
Left							Right							
Reference	35	36	37	38	39	302	303	300	301	30	31	32	33	34
Code	TCS035	TCS036	TCS037	TCS038	TCS039	TCS302	TCS303	TCS300	TCS301	TCS030	TCS031	TCS032	TCS033	TCS034

# Crown & Bridge Instruments



## Crown & Bridge Remover

Stainless Steel. Moveable weight. 3 different tips. Autoclavable. DCR300

Replacement tips. Pack 3: DCR301. DCR306



## Crown Scissors - Bee-Bee

Curved. Autoclavable. Each. DSD310



## Crown Preparation Kit

8 diamond burs for bevelling margins. 290/010 (T10), 290/012 (T12), 556, 556C, 554C, 557U/F, 558F, 546. BD001



## Crown Lift Kit

Automatic Crown and Bridge Remover. 3 tips. Autoclavable. 1 handle, 1 pin, 1 plate and 3 hooks. DCR305



## Crown Scissors - Bee-Bee

Straight. Autoclavable. Each. DSD315



## Tissue Austin 2

Autoclavable. Each. DRE020



## Minnesota Flap

Autoclavable. Each. DRE125



## Oringer Cheek

Autoclavable. Each. DRO217



## Gum Flap (Rake)

Autoclavable. Each. DRE120



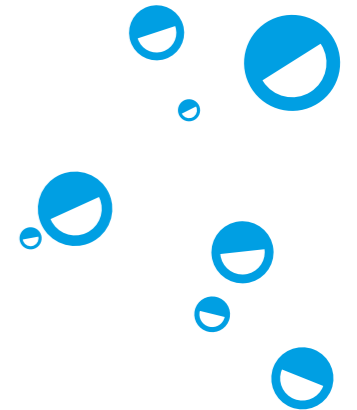
## Kilner

Autoclavable. Each. DRE015



## Bowdler Henry

Autoclavable. Each. DRE010



Why you love UnoDent

"The Crown and bridge remover can be used with one hand."



# Extraction

[Click the product codes to view more information](#)

## Luxators



**1**  
Straight 2mm  
DEE001



**3**  
Straight 5mm  
DEE003



**5**  
Curved 5mm.  
DEE005



**7**  
Bayonet 3mm  
DEE007



**2**  
Straight 3mm  
DEE002



**4**  
Curved 3mm  
DEE004



**6**  
Curved downward 3mm  
DEE006



**Luxation Kit**  
Contains: 1, 2, 3, 4, 5, 6, 7  
DEE000



# Elevators & Curettes



**1 Coupland - Small**  
Autoclavable. Each.  
DEE411, DEE111



**3 Coupland - Large**  
Autoclavable. Each.  
DEE413, DEE113



**31 Cryer's - Right**  
Autoclavable. Each.  
DEE131



**9 Periosteal**  
Autoclavable. Each.  
DEE179, DEE440



**Howarth**  
Autoclavable. Each.  
DEE350



**30 Cryer's - Left**  
Autoclavable. Each.  
DEE130



**Lucas 86 Bone Curette**  
Round handle.  
Autoclavable. Each.  
DSC290



**2 Coupland - Medium**  
Autoclavable. Each.  
DEE412, DEE112



# Warwick James



**Warwick James - Left**  
Autoclavable. Each.  
DEE190, DEE420



**Warwick James - Straight**  
Autoclavable. Each.  
DEE193, DEE422



**Warwick James - Right**  
Autoclavable. Each.  
DEE192, DEE421

# Accessories



**Kidney Dish 8"**  
Stainless Steel.  
Autoclavable. Each.  
GTB008



**Kidney Dish 9"**  
Polystyrene Single-use.  
Each.  
GTB050



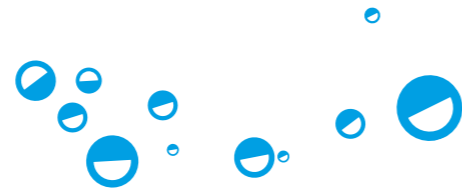
**Kidney Dish 10"**  
Stainless Steel.  
Autoclavable. Each.  
GTB010



**Scalpel Handle 3**  
Autoclavable. Each.  
SHU013

# Forceps

## Upper Forceps



**No. 1  
Upper Centrals & Canines**  
Autoclavable. Each.  
DFO104, DFO404



**No. 17  
Upper Molars - Right**  
Autoclavable. Each.  
DFO112, DFO412



**No. 51  
Upper Roots / 3rd Molars**  
Autoclavable. Each.  
DFO125, DFO426



**No. 76  
Upper Roots**  
Autoclavable. Each.  
DFO137, DFO437



**No. 93  
2nd Upper Molars - Left**  
Autoclavable. Each.  
DFO145



**No. 7  
Upper Roots & Bicuspid**  
Autoclavable. Each.  
DFO110, DFO410



**No. 18  
Upper Molars - Left**  
Autoclavable. Each.  
DFO113, DFO413



**No. 76N  
Upper Roots**  
Autoclavable. Each.  
DFO135, DFO438



**No. 67  
Upper Molars & Roots**  
Autoclavable. Each.  
DFO106



**No. 94  
Upper Molars - Right**  
Autoclavable. Each.  
DFO146, DFO446

## Upper Forceps



**No. 95  
Upper Molars - Left**  
Autoclavable. Each.  
DFO147, DFO447



**No. 97  
Small Upper Molars -  
Left**  
Autoclavable. Each.  
DFO149



**No. 22  
Lower Molars**  
Autoclavable. Each.  
DFO116, DFO416



**No. 74  
Lower Roots**  
Autoclavable. Each.  
DFO128, DFO428



**No. 75  
Lower Bicuspid**  
Autoclavable. Each.  
DFO134, DFO434



**No. 96  
Small Upper Molars**  
Autoclavable. Each.  
DFO148



**No. 113  
Upper Roots (Martin)**  
Autoclavable. Each.  
DFO152



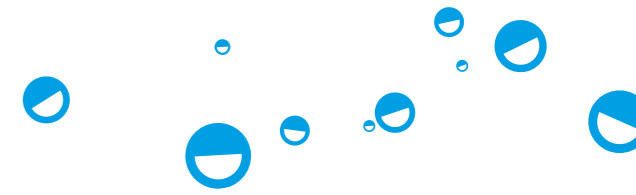
**No. 73  
Lower Molars**  
Autoclavable. Each.  
DFO127, DFO427



**No. 74N  
Small Lower Roots &  
Crowded Incisors**  
Autoclavable. Each.  
DFO131, DFO431



**No. 79  
Lower Wisdom**  
Autoclavable. Each.  
DFO138



# Forceps

## Upper and Lower Forceps



**No. 86 Lower 3rd Molars (Cowhorn)**  
Autoclavable. Each.  
DFO139, DFO440



**Roots**  
Autoclavable. Each.  
DFO510



**Molars**  
Autoclavable. Each.  
DFO530



**No. 37 Child Upper Incisors & Canines**  
Autoclavable. Each.  
DFO119, DFO424



**No. 123 Child Lower Teeth**  
Autoclavable. Each.  
DFO155, DFO455



**No. 87 Lower Molars (Cowhorn)**  
Autoclavable. Each.  
DFO140



**Centrals, Anterior & Bicuspid**  
Autoclavable. Each.  
DFO520



**No. 161 Child Lower Molars**  
Autoclavable. Each.  
DFO180



**No. 39 Child Upper Molars**  
Autoclavable. Each.  
DFO122, DFO425



**No. 138 Child Upper Teeth & Roots**  
Autoclavable. Each.  
DFO160, DFO460

## Childrens Forceps

## Artery Forceps



**Fickling - Toothed**  
Each.  
DFO210



**Mosquitos Curved 5"**  
Autoclavable. Each.  
DFO221



**Spencer Wells Straight 5"**  
Stainless Steel. Autoclavable.  
DFO228



**Mosquitos Haemostat**  
Grooved with Hole Tip  
Each.  
DPI362



**Mosquitos Straight 5"**  
Autoclavable. Each.  
DFO222



**Spencer Wells Curved 5"**  
Stainless Steel. Autoclavable.  
DFO225



**Treves Fine 5"**  
Autoclavable. Each.  
DFO213



**Treves/Semkin Extra-Fine 5"**  
Autoclavable. Each.  
DFO216

## Tissue Forceps



# Surgical

[Click the product codes to view more information](#)

## Drape kits



### Standard Drape Kit - Sterile

2 x Surgeon gown grade A, 4 x Hand towel – wrapped separately, 1 x U-shape drape 180cm x 270cm + adhesive + tube holders, 1 x Mayo cover, 1 x Head bar drape 80cm x 100cm + adhesive, 1 x Outer wrap 180cm x 140cm, 3 x Adhesive film (blue) 20cm x 20cm, 1 x Aspiration system with tip, 1 x Blue adaptor, 2 x Drill sleeves 120cm, 4 x X-ray gauze swab (7.5cm x 7.5cm), 1 x Saliva ejector, 1 x Suction tube connector, 1 x 3 metres of suction tube.

**COP400**



### Complete Drape Kit

2 x Surgeon gown grade A, 4 x Hand towel – wrapped separately, 2 x Face mask ear loop, 1 x Face mask with ties, 2 x Head covers with elastic, 1 x Head covers with ties, 1 x Drape 90cm x 120cm, 1 x Drape 75cm x 90cm, 1 x U-drape 100cm x 150cm + adhesive + tube holders, 1 x Outer wrap 180cm x 140cm, 3 x Adhesive film (blue) 20cm x 20cm, 3 x Adhesive film 5cm x 80cm, 1 x Aspiration system with tip, 1 x Blue adaptor, 3 x Drill sleeves 120cm, 1 x Elastic cap radio cover, 1 x Galley pot (small), 1 x Kidney dish, 4 x X-ray gauze swab (7.5cm x 7.5cm), 1 x Suction tube connector, 1 x 3 metres of suction tube, 1 x Yellow bio hazard bag for trash, 1 x Yankuer (fine), 1 x Plastic tweezers.

**COP405**



### Surgical Gown Kit

1 x Surgeon Gown 60gsm AAMI Level 2, 2 x Hand Towel (40cm x 40cm).

**COP410**



# Surgical Burs

Tungsten Carbide



**RA 8 - Round 28mm**  
Tungsten Carbide. Autoclave prior to use. Single use. Each. SAU010



**HP 8 - Round 51.5mm**  
Tungsten Carbide. Autoclave prior to use. Single use. Each. SAU030



**HP 8 - Round 70mm**  
Tungsten Carbide. Autoclave prior to use. Single use. Each. SAU130



**RA 702 - Fissure 28mm**  
Tungsten Carbide. Autoclave prior to use. Single use. Each. SAU020



**HP 702 - Fissure 51.5mm**  
Tungsten Carbide. Autoclave prior to use. Single use. Each. SAU040



**HP 702 - Fissure 70mm**  
Tungsten Carbide. Autoclave prior to use. Single use. Each. SAU140



# Surgical Accessories



**Kidney Dish 8"**  
Stainless Steel. Autoclavable. Each. GTB008



**Kidney Dish 9"**  
Polystyrene Single-Use. Each. GTB050



**Surgical Mallet**  
Autoclavable. Each. DCI010



**Kidney Dish 10"**  
Stainless Steel. Autoclavable. Each. GTB010



**Scalpel Handle 3**  
Autoclavable. Each. SHU013



**Rhodes Chisel 36/37**  
Autoclavable. DEE445





# Orthodontics

[Click the product codes to view more information](#)

## Photography



### **Intraoral Photo Mirror - Chromium Coated**

Palatal Adult, Palatal Child, Buccal, Lingual or Palatal XL. Each.

XXO001 - XXO005



### **Intraoral Photo Mirror - Stainless Steel**

Adult & Child Palatal, Buccal, Lingual Upper & Lower. Adult Palatal & Buccal.

Autoclavable. Each.

XXO031 - XXO035



### **Maxee Cheek Retractor**

Child, Teen, Adult. Autoclavable. Each.

DRO309 - DRO311



### **Kombee Cheek Retractor**

Small or large. Autoclavable. Each.

DRS000, DRS001



### **Cheek Retractors - Long Handle**

Adult or Child. Autoclavable up to 121° C. Pack 2.

DRE130, DRE140



### **Lip Retractor Long Handled**

Child. Autoclavable. Each.

DRS011



# Photography



**Extraoral Cheek Retractor - Extended tabs**

Child or Adult. Autoclavable. Each.  
DRO110, DRO111



**Lip and Cheek Retractor**

Child, Teen, Adult. Autoclavable. Pack 2.  
DRO100 - DRO102



**Soft Lip & Cheek Retractor**

Cold sterilisable. Each.  
DRO105



**Photo Cheek Retractor - Double Ended**

For adult or child. Sterilisable up to 132°C. Each.  
DRO211



**Cheek Retractor - Stainless steel**

Adult and child. Sterilisable. Each.  
DRO215



# Disposable Impression Trays



**Paedo - Red**

Pack 50.  
Upper IIO051  
Lower IIO061



**X Small - Orange**

Pack 50.  
Upper IIO052  
Lower IIO062



**Small - Blue**

Pack 50.  
Upper IIO053  
Lower IIO063



**Assorted Packs**

Contains 6 sizes, with 10 trays of each size. Pack 60.  
Upper IIO070  
Lower IIO080



**Medium - Green**

Pack 50.  
Upper IIO054  
Lower IIO064



**Large - Yellow**

Pack 50.  
Upper IIO055  
Lower IIO065



**X Large - Purple**

Pack 50.  
Upper IIO056  
Lower IIO066



**Orthodontic Alginate**

Strawberry. Extra fast setting.  
Tear resistant. 453g.  
IAA315

# Professional Patient Kits & Bracket Systems

## Professional Brackets

Our professional brackets provide unmatched strength, slot accuracy and polished surface smoothness - ensuring free sliding archwires with zero wire notching. Available in MBT & Roth .022 slot technique systems.

- MIM Manufacturing Process
- Strong slot and hooks
- Accurate archwire slot
- Smooth finish - Reduced Friction
- Colour coded markings - easy quadrant identification
- 80-gauge mesh base - excellent retention
- Ample under tie-wing area - easy ligature placement
- Available with gingivally offset lower bicuspids and incisors on a larger offset bonding pad to prevent debonding due to occlusal interference.

### Single Patient Kits

	MBT	Roth
U&L 5-5 hooks on 3, 4, 5	UOB056	UOB025
U&L 5-5 hooks on 3's	UOB057	UOB026
U&L 6-6 Off-set pads & hooks on 3, 4, 5	UOB058	-
U&L 6-6 hooks on 3's, LP Tubes	UOB100	-
U&L 6-6 hooks on 3's Offset Base, LP Tubes	UOB101	-



## Why you love UnoDent

"I have been using the Unodent Brackets and LP buccal tubes for the past 3 years with excellent finishes. They are high quality and comparable with other more expensive brackets and tubes and I have had no problems with bond failures and deliver exactly to their torque prescription."

Dr R.R. Mahesh  
M-Brace Orthodontics Scotland

### Upper MBT

	Left	Right
Central	UOB027	UOB035
Lateral	UOB028	UOB036
Cuspid	UOB029	UOB037
Cuspid - hook	UOB030	UOB038
1st Bicuspid	UOB031	UOB039
1st Bicuspid - Mesial hook	UOB032	UOB040
2nd Bicuspid	UOB033	UOB041
2nd Bicuspid - Mesial hook	UOB034	UOB042

### Upper Roth

	Left	Right
	UOB000	UOB007
	UOB001	UOB008
	-	-
	UOB002	UOB009
	UOB003	UOB010
	UOB004	UOB011
	UOB005	UOB012
	UOB006	UOB013

### Lower MBT

	Left	Right
	UOB043	
	UOB044	UOB048
	UOB045	UOB049
	UOB052	UOB053
	UOB046	UOB050
	UOB054	UOB055
	UOB047	UOB051

### Lower Roth

	Left	Right
	UOB014	
	-	-
	UOB015	UOB018
	UOB021	UOB022
	UOB016	UOB019
	UOB023	UOB024
	UOB017	UOB020

### Lower MBT Offset Pads

	Left	Right
	UOB102	
Anterior	UOB103	UOB104
1st Bicuspid	UOB075	UOB078
2nd Bicuspid	UOB077	UOB080
2nd Bicuspid - Mesial hook	UOB076	UOB079



Bands are available on request

# Buccal Tubes



## Professional Buccal Tubes

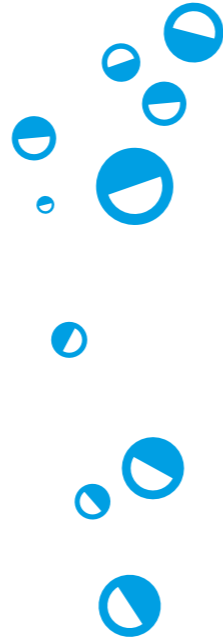
- MIM Manufacturing Process
- 80 Gauge mesh base ensuring excellent bond strength
- Colour coded markings for each quadrant

## Professional Low Profile Buccal Tubes

- Ultra Low Profile Design - LP Buccal Tubes Offer maximum comfort to the patient
- MIM manufacturing process
- Funneled entrance assists in easy wire insertion
- 80-gauge mesh base with anatomical contour ensures precise fit and excellent bond strength
- Permanent numbered quadrant identification marking

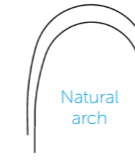
	MBT .022 Slot	Roth .022 Slot
UL6	UOB063	UOB059
UR6	UOB064	UOB060
LL6	UOB065	UOB061
LR6	UOB066	UOB062

	MBT LP .022 Slot	Roth LP .022 Slot
UL6	UOB071	UOB067
UR6	UOB072	UOB068
LL6	UOB073	UOB069
LR6	UOB074	UOB070
UL7	UOB091	UOB095
UR7	UOB092	UOB096
LL7	UOB093	UOB097
LR7	UOB094	UOB098



# Archwires

NiTi  
Pack 10



Round	Upper Natural	Upper Euro	Lower Natural	Lower Euro
0.012	UOW111	UOW121	-	UOW126
0.014	UOW112	UOW122	UOW117	UOW127
0.016	UOW113	UOW123	UOW118	UOW128
0.018	UOW114	UOW124	UOW119	UOW129
0.020	UOW115	UOW125	UOW120	UOW130

Rectangular	Upper Natural	Upper Euro	Lower Natural	Lower Euro
16x16	UOW131	UOW147	UOW139	UOW155
16x22	UOW132	UOW148	UOW140	UOW156
17x22	UOW133	UOW149	UOW141	UOW157
17x25	UOW134	UOW150	UOW142	UOW158
18x22	UOW135	UOW151	UOW143	UOW159
18x25	UOW136	UOW152	UOW144	UOW160
19x25	UOW137	UOW153	UOW145	UOW161
21x25	UOW138	UOW154	UOW146	UOW162

NiTi - Individually Wrapped  
Pack 10



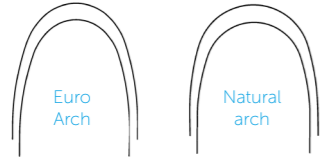
Round	Upper Natural	Upper Euro	Lower Natural	Lower Euro
0.012	UOW170	UOW180	UOW175	UOW185
0.014	UOW171	UOW181	UOW176	UOW186
0.016	UOW172	UOW182	UOW177	UOW187
0.018	UOW173	UOW183	UOW178	UOW188
0.020	UOW174	UOW184	UOW179	UOW189

Rectangular	Upper Natural	Upper Euro	Lower Natural	Lower Euro
16x16	UOW266	UOW282	UOW274	UOW290
16x22	UOW267	UOW283	UOW275	UOW291
17x22	UOW268	UOW284	UOW276	UOW292
17x25	UOW269	UOW285	UOW277	UOW293
18x22	UOW270	UOW286	UOW278	UOW294
18x25	UOW271	UOW287	UOW279	UOW295
19x25	UOW272	UOW288	UOW280	UOW296
21x25	UOW273	UOW289	UOW281	UOW297

# Archwires

## Heat Activated NiTi

Pack 10



Round	Upper Natural	Upper Euro	Lower Natural	Lower Euro
0.012	UOW210	UOW220	UOW215	UOW225
0.014	UOW211	UOW221	UOW216	UOW226
0.016	UOW212	UOW222	UOW217	UOW227
0.018	UOW213	UOW223	UOW218	UOW228
0.020	UOW214	UOW224	UOW219	UOW229

Rectangular	Upper Natural	Upper Euro	Lower Natural	Lower Euro
16x16	UOW230	UOW250	UOW238	UOW258
16x22	UOW231	UOW251	UOW239	UOW259
17x22	UOW232	UOW252	UOW240	UOW260
17x25	UOW233	UOW253	UOW241	UOW261
18x22	UOW234	UOW254	UOW242	UOW262
18x25	UOW235	UOW255	UOW243	UOW263
19x25	UOW236	UOW256	UOW244	UOW264
21x25	UOW237	UOW257	UOW245	UOW265

## NiTi Reverse Curve

Pack 10



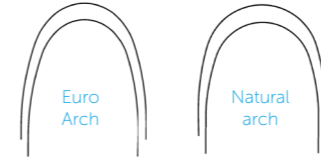
Round	Upper	Lower
0.012	UOW326	UOW331
0.014	UOW327	UOW332
0.016	UOW328	UOW333
0.018	UOW329	UOW334
0.020	UOW330	UOW335

Rectangular	Upper	Lower
16x16	UOW310	UOW318
16x22	UOW311	UOW319
17x22	UOW312	UOW320
17x25	UOW313	UOW321
18x22	UOW314	UOW322
18x25	UOW315	UOW323
19x25	UOW316	UOW324
21x25	UOW317	UOW325



## Stainless Steel

Pack 10



Round	Upper Natural	Upper Euro	Lower Natural	Lower Euro
0.012	UOW001	UOW021	UOW006	UOW026
0.014	UOW002	UOW022	UOW007	UOW027
0.016	UOW003	UOW023	UOW008	UOW028
0.018	UOW004	UOW024	UOW009	UOW029
0.020	UOW005	UOW025	UOW010	UOW030

Rectangular	Upper Natural	Upper Euro	Lower Natural	Lower Euro
16x16	UOW041	UOW071	UOW047	UOW077
16x22	UOW042	UOW072	UOW048	UOW078
17x25	UOW043	UOW073	UOW049	UOW079
18x25	UOW044	UOW074	UOW050	UOW080
19x25	UOW045	UOW075	UOW051	UOW081
21x25	UOW046	UOW076	UOW052	UOW082

## Stainless Steel - Individually Wrapped

Pack 10



Round	Upper Natural	Upper Euro	Lower Natural	Lower Euro
0.012	UOW011	UOW031	UOW016	UOW036
0.014	UOW012	UOW032	UOW017	UOW037
0.016	UOW013	UOW033	UOW018	UOW038
0.018	UOW014	UOW034	UOW019	UOW039
0.020	UOW015	UOW035	UOW020	UOW040

Rectangular	Upper Natural	Upper Euro	Lower Natural	Lower Euro
16x16	UOW055	UOW085	UOW061	UOW091
16x22	UOW056	UOW086	UOW062	UOW092
17x25	UOW057	UOW087	UOW063	UOW093
18x25	UOW058	UOW088	UOW064	UOW094
19x25	UOW059	UOW089	UOW065	UOW095
21x25	UOW060	UOW090	UOW066	UOW096

# Archwires

## Titanium Molybdenum Alloy

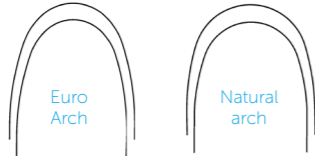
Pack 10



### Round

0.016  
0.018  
0.020

Upper Euro	Lower Euro
UOW525	UOW528
UOW526	UOW529
UOW527	UOW530



### Rectangular

16x22  
17x25  
19x25

Upper Natural	Upper Euro	Lower Natural	Lower Euro
UOW336	UOW342	UOW339	UOW345
UOW337	UOW343	UOW340	UOW346
UOW338	UOW344	UOW341	UOW347



# Archwires - Euro II

UnoDent Professional ortho archwires in the Euro II archform. Damon\* compatible and for all self ligation techniques is now available in Heat Activated Copper Niti with and without stops, Stainless Steel and TMA ensuring your practice has the correct wire at every stage of treatment. Individually-wrapped wires (Uno Packs) are delivered autoclavable envelopes.

## Pre-stopped Copper Niti - Individually Wrapped

Pack 10



### Round

0.013  
0.014  
0.016  
0.018

Euro II
UOW505
UOW506
UOW507
UOW508

### Rectangular

14x25  
16x25  
18x25

Euro II
UOW509
UOW510
UOW511

## Copper Niti - Individually Wrapped

Pack 10



### Round

0.013  
0.014  
0.016  
0.018

Euro II
UOW512
UOW513
UOW514
UOW515

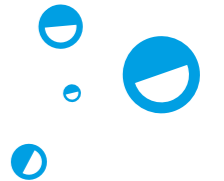
### Rectangular

14x25  
16x25  
18x25

Euro II
UOW516
UOW517
UOW518



Euro II Arch



\*Damon is a registered trademark of Ormco and does not imply endorsement by the manufacturer.

# Archwires - Euro II

UnoDent Professional ortho archwires in the Euro II archform. Damon\* compatible and for all self ligation techniques is now available in Heat Activated Copper Niti with and without stops, Stainless Steel and TMA ensuring your practice has the correct wire at every stage of treatment. Individually-wrapped wires (Uno Packs) come in autoclavable envelopes.

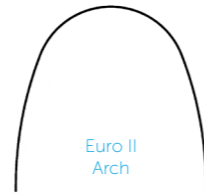
## Stainless Steel - Individually Wrapped

Pack 10



## Titanium Molybdenum Alloy - Individually Wrapped

Pack 10



Euro II Arch

## Round

0.018

0.020

## Euro II

UOW500

UOW501

## Round

0.016

0.018

0.020

## Euro II

UOW519

UOW520

UOW521

## Rectangular

16x22

17x25

19x25

## Euro II

UOW502

UOW503

UOW504

## Rectangular

16x22

18x25

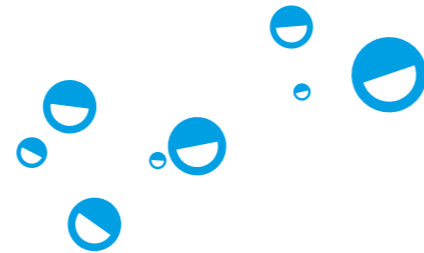
19x25

## Euro II

UOW522

UOW523

UOW524



\*Damon is a registered trademark of Ormco and does not imply endorsement by the manufacturer.

# Auxiliaries, Springs & Attachments



## Long Stainless Steel Ligatures

.010

UOW412

.012

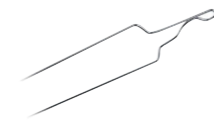
UOW413



## Short Stainless Steel Twisted Ligatures

.010

UOW414



## Long Kobayashi Ligatures

.012

UOW408

.014

UOW409



## Short Kobayashi Twisted Ligatures

.012

UOW410

.014

UOW411



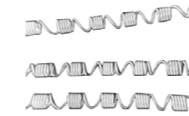
## NiTi Open Coil Spring Spool

.010 x .030

UOW415

.012 x .030

UOW416



## NiTi Open and Closed Distalizing Spring

Pack 3.

.010x.045

UOW417



## NiTi Closed Coil Spring

mm length of spring excluding eyelets. Pack 10.

010' x 3mm UOW400

010' x 6mm UOW401

010' x 9mm UOW402

010' x 12mm UOW403

012' x 3mm UOW404

012' x 6mm UOW405

012' x 9mm UOW406

012' x 12mm UOW407



## Lingual Buttons

Pack 10.

Rectangular Posterior UOB106

Round Anterior UOB107



## Eruption Chain Gold Eyelet

Eruption Chain and Pad for bonding to impacted cuspids. Each.

Round Base UOB105



# Orthodontic Instruments



**PFI-6 Flat Plastic DE**  
Octagonal Handle -  
Autoclavable. Each.  
DPF106



**Bonding Tweezers**  
Serrated with alignment  
tip. Each.  
DPI391, DPI390, DPI311,  
DPI332



**Separating Plier**  
Each.  
DPI330



**Mathieu Narrow  
Tip Pliers**  
Heat sterilisable. Each.  
DNE165



**Mauns Cutter**  
Autoclavable. Stainless  
steel. Each.  
DCV300



**4 Carver  
Osteo-Mitchell DE**  
Autoclavable. Each.  
DCC170, DCC197, DCC198



**Double Ended Ligature  
Director- Octagonal**  
Autoclavable Handle. Each.  
DPI310



**Keats Buccal Tube  
Tweezer**  
Regular or Reverse Action.  
DPI357, DPI410.



**Mershon Band Pusher**  
Stainless steel. Each.  
DPI313



**Adams and Spring  
Former Pliers**  
64 or 65. Autoclavable.  
Stainless steel. Each.  
DPI164, DPI165

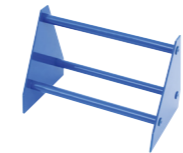
# Accessories



**Archwire Organiser**  
Archwire Holder With  
Cover. Each.  
222500



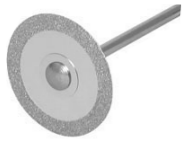
**Orthoblaster**  
A fully autoclavable sandblaster.  
Simple installation kit and  
sample of 50 micron abrasive  
grit are included. Each  
QYU050



**A Frame Plier rack**  
Blue. Each.  
DPI358



# IPR



## Superflex Diamond Discs

Single and Double Sided Diamond Discs mounted on a fixed mandrel. Latch Grip. Each.

### Single Sided

19mm BHU155, BHU170  
22mm BHU160, BHU175

### Double Sided

16mm BHU230  
19mm BHU231  
22mm BHU232



## Stripping Discs

Serrated diamond discs with fine diamond grit. Latch Grip. Each.

### Double Sided RA

19mm BHU190  
22mm BHU220



## Disc Guards

Protects patient's lip, cheeks and gums from laceration. Pack 3. BHU500



## ProxyMate Intro Packs

10 strips (variety of grits), 2 handles. Refills Available. Single and Double sided grits KFS200 Double sided grits KFS000



# Debonding Burs



## 010-204 RA / RA 1170

Tapered Fissure 8 fluted. Latch Grip. Blister Pack Solo Peel. Single Dispensing Pull Back Label. Pack 5. 296500



## 014-204 / RA 1171½ 014-314 / FG 1171½

Tapered Fissure 8 fluted. Latch Grip. Blister Pack Solo Peel. Single Dispensing Pull Back Label. Pack 5.

Latch Grip RA 296501  
Friction Grip FG 296503



## 018-061 / RA 7006 018-061 / FG 7006

Round Head. Blister Pack Solo Peel. Single Dispensing Pull Back Label Pack 5.

Latch Grip RA 296505  
Friction Grip FG 296504



## 1172 RA 1172 FG

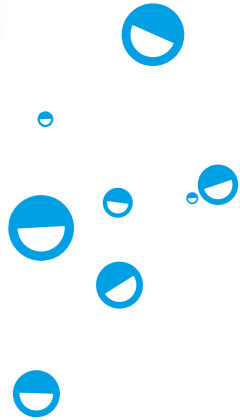
Tapered Fissure 8 fluted. Blister Pack Solo Peel. Single Dispensing Pull Back Label. Pack 10.

Latch Grip RA 296506  
Friction Grip FG 296507



## Orthodontic Bur Starter Kit

4 different trimmers/burs, 3 mounted lab polishers medium and fine grit, a polishing wheel and a screw type mandrel. KUO000



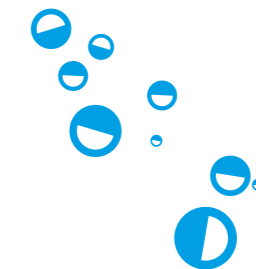


# Laboratory Supplies

[Click the product codes to view more information](#)

## Acrylic Trimmers

Our Tungsten Carbide Acrylic Trimmers make the trimming of hard materials a breeze. Made from high-class tungsten carbide they have a strong construction and precision toothing.



	72	77	78	79	251	351
<b>Cross Cut Standard</b>						
040	-	-	BAT035	-	-	BAT040
045	-	-	-	BAT025	-	-
060	BAT030	BAT000/045	BAT010	BAT020	BAT050	BAT005
<b>Plain Cut Standard</b>						
040	-	-	-	BAT127	BAT135	-
045	-	-	-	BAT126	-	-
060	BAT110	BAT130	BAT120	BAT125	BAT140	BAT115

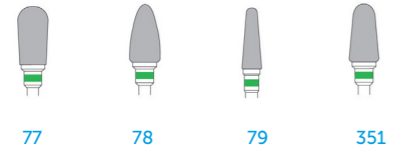
# Acrylic trimmers

## Cross Cut Fine



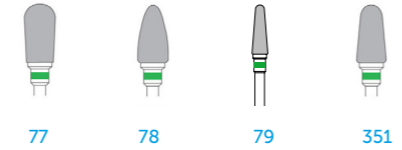
040	-	-	BAT086	-	-
045	-	-	BAT080	-	-
060	BAT055	BAT065	BAT075	BAT070	BAT060

## Cross Cut Coarse



045	-	-	BAT105	-
060	BAT090	BAT100	-	BAT095

## Plain Cut Coarse



045	-	-	BAT160	-
060	BAT145	BAT155	-	BAT150



# Denture Accessories & Lab Materials



**Willis Bite Gauge**  
Autoclavable. Each.  
IXW012



**Denture Adjustment Kit**  
6 assorted points in HP shank. 1 TC trimmer, 4 silicone points for initial polishing, 1 silicone point for high lustre final polishing.  
KUD000



**Wax Knives - Wooden handle**  
Small or Large. Cold sterilisation only. Each.  
JWX010, JW015



**Denture Reline Powder**  
Self curing chairside denture reline material.  
100g Powder  
IFR307



**Denture Reline Kit**  
Self curing chairside denture reline material. Soft or Hard.  
  
100g Powder, 100ml Liquid, 30ml Acrylic Bonding Primer, Powder & Liquid Measures, 20 x Mixing Cups, and Brush.  
IFR302, IFR304



**Iwansson Gauge**  
Stainless steel. Autoclavable. Each.  
EXG610



**Fox's Bite Plane**  
Non-Autoclavable. Cold Sterilisation only. Each.  
IXF010



**Wax Knives - Metal**  
Small or Large. Autoclavable. Each.  
JWX020, JW025



**Denture Reline Liquid**  
Self curing chairside denture reline material.  
Soft or Hard. 100ml Liquid.  
IFR308, IFR309

# Index

Click the page numbers to go each section

## A

Acrylic Trimmers 165, 166  
Adhesive 121  
Aesthetic Restorative 94  
Aiming Devices 39  
Aiming Ring 39  
Alginate 121, 149  
Alpha-Core 119  
Alpha-Pro 49  
Amalgam Carriers 97, 98, 99  
Amalgam Gun 99  
Amalgam Well 99  
Apron Dispenser 14  
Aqua-Fil 94  
Aqua-Silver 94  
Archwires 153, 154, 156, 157, 158  
Acrylic trimmers 165, 166  
Artery Forceps 141  
Articulating paper 96  
Aspirator Cleaner 11  
Aspirators 12  
Aspisept 11  
AutoRinse 11

## B

Barbed Broaches 111  
Barrier Envelopes 40  
Barrier Film 18  
Bib Dispenser 14  
Bibs 33  
Bite Covers 40  
Bite Gauge 167

Bite Plane 167  
Bite Registration 122  
Bonds 86  
Brackets 150  
Bristle Brushes 51  
Brushes 51, 54  
Buccal Tubes 152  
Bur Brushes 77  
Bur Disinfecting Box 77  
Bur Holders 76  
Bur Kits 75  
Burs 56, 78, 144, 163

## C

Carvers 85  
Chair Cover 18  
Cheek Retractor 147  
Chisel 145  
Cleanser 10, 94  
Clear Crown Forms 128  
Code Rings 87  
Compomers 90  
Composite Brush 93  
Composite Instruments 84  
Composites 90, 92  
Compule Gun 93  
Consumables 8  
Core Build-up 119  
Cotton Dispenser 16  
Cotton Pellet Dispenser 16  
Cotton Products 30  
Cotton Wool Pellets 30  
Cotton Wool Rolls 30  
Coversight 19  
CrackerJack 19  
Crown & Bridge 132  
Crown Forms 128, 130  
Cup Dispenser 17  
Cups 31  
Curettes 48, 136

Curing Light Sleeve 18

## D

Debonding Burs 163  
Dental Needles 5  
Denture Reline 167  
DE-SEN 55  
Developer 41  
Diamond Burs 57, 58, 60, 62  
Digital Sensor Holders 39  
Disc Guards 162  
Disinfectant 9, 10  
Disinfectant Spray 10  
Disinfectant Wipes 9  
Disinfection Bath 10  
Disinfection Box 21  
Dispensers 14, 16  
DispoTray 31  
Dosing Device 17  
Drape kits 143  
Drying Cloths 9

## E

Elevators 136  
Endodontic Instruments 110, 112, 114  
Endodontic Organisers 116  
Endodontics 106  
Endodontic Tips 117  
Endo Measuring 116  
Equinox 19  
Exact 121  
Examination 24  
Excavators 79, 80  
Extraction 134

## F

Face Mask Dispenser 16  
Facial Tissue Dispenser 16

Files 112, 113  
Fillers 114  
Film 41  
Film Pockets 40  
Fixer 41  
Floor Cleaner 10  
Flowables 89  
Forceps 37, 96, 107, 138, 140

## G

Gates Glidden 111  
Gauge 167  
Gauze 30  
Gauze Dispenser 16  
Glasses 19  
Glass Ionomers 94  
Glove Box Dispenser 15  
Gloves 32  
Gold Diamond Burs 64, 66

## H

Hand Disinfectant 11  
Hand Pump 17  
Hand Scalars 46, 47  
Hanger 41  
Headrest Cover 18  
Hygiene 42  
Hygiene Sleeve 40

## I

Imprep 122  
Impression Materials 120, 122, 149  
Impression Trays 124, 125  
Indicator Strip 23  
Infection Control 8  
Instrument Cassette 20  
Instrument Rack 20  
Instrument Trays 20

Interdental Brushes 52, 54  
Intraoral Photo Mirror 147  
Intra-oral Tips 55  
IPR 162

## K

Kidney Dish 137, 145

## L

Lab Materials 167  
Laboratory Supplies 164  
Luminos 90  
Luxators 135

## M

Mandrels 55, 105  
Matrix 100  
Matrix Bands 101  
Matrix Retainers 101  
Measuring 121  
Mirror Handle 25  
Mirrors 25  
Mirror Spray 25  
Mixing Pads 88  
Mixing Tips 119  
Mouth Mirror 25  
Mouthwash 31

## N

Nano-Ceramic LC 90  
Needle Holders 34, 35  
Needles 4, 5  
Nylon Brushes 51

## O

Orthoblaster 161  
Orthodontic Alginate 149

Orthodontic Instruments 160  
Orthodontics 146

## P

Paper Points 115  
Perio Probes 28  
Photo Cheek Retractor 148  
Photography 147, 148  
Photo Mirror 147  
Plastic Filling Instruments 81, 82

Plier rack 161  
Pluggers 114, 115  
Points 115  
Polishing 103, 104  
Polishing Cups 50  
Polishing Paste 104  
Polycarbonate Crowns 130  
Prevention 42  
Probes 26, 28  
Prophy Cups 50  
Prophy Paste 49  
Protective Barriers 18  
Proxymate 162  
Purified Water 23  
Putty 122

## Q

QuickShot 39

## R

Ready Foil 96  
Reamers 110, 111  
Restoratives 78  
Rubber Cups 50  
Rubber Dam Clamps 108  
Rubber Dam Forceps 107  
Rubber Dam Frame 107

Rubber Dam Punch 107  
Rubber Dams 107  
Rubber Dam Template 107

## S

Safety Glasses 19  
Saliva Ejector Dispenser 17  
Scaler Tips 44  
Scalpel Handle 137, 145  
Scissors 36, 132  
Screwposts 119  
Sealents 55  
Shade Guide 93  
Sharps Box 7  
Spatulas 93, 95, 121  
Spreaders 114  
Springs 159  
Steel Burs 68, 70  
Sterilisation 20, 22  
Sterilisation Pouches 22  
Steriltray 21  
Stic Adhesive 121  
Stripping Disc 162  
Surface Disinfectant 9, 10  
Surgical 142  
Surgical Burs 144  
Surgical Gown 143  
Surgical Mallet 145  
Suspension Foam 11  
Swabs 30  
Syringe Accessories 7  
Syringes 4, 6  
Syringe Sleeve 18

## T

Temporary Cement 95  
Temporary Crown 127  
Temporary Luting Cement 95  
Throat Pack 30

Tissue Forceps 141  
Toothbrushes 54  
Torque Wrenches 45  
Tottle Clips 87  
Tray Liners 31  
Tray Sleeve 18  
Trimmer 103, 104  
Tungsten Carbide Burs 71, 72, 74  
Tweezers 29, 160  
Twister Diamond Burs 67

## U

Ultrasonic Cleaner 11  
Ultrasonic inserts 43  
UnoCore 119, 127  
Unoloy 97  
Unolux 55, 91  
UnoTect 19  
UnoTemp 127  
UnoTrays 124

## V

Veneer Kit 127  
Veneers 126  
Visors 19

## W

Warwick James 137  
Wash 122  
Wax Knives 167  
WildCat Burs 74  
Wipes 9  
WrapAround 16, 18, 40

## X

X-Ray 38  
X-Ray Head Cover 18

X-Ray Marker 41  
X-Ray Viewer 41

## We Listen

"UnoDent has evolved over the years and we have listened to our customers and taken on feedback from clinical testing panels. Today we are very proud to be able to sell products that are both high in quality but also priced competitively. The key is to find the right products that work well in your hands and can make up your trusted armamentarium. For me personally, this means using a combination of Unodent and other branded products – spending time on product selection can make a huge difference to your clinical work as well as having a positive impact on your business."

Dr Farzeela Merali-Rupani BDS BSc MSc  
Head of Clinical at DD, General Dental Practitioner  
and Undergraduate Clinical Teacher

# UNODENT

Discover the whole range at [DDgroup.com](http://DDgroup.com)