



# Block Shop Collection

Chair-side and Laboratory Materials

[www.ddgroup.com](http://www.ddgroup.com)



## Block Shop Collection at DD

Everything you need for chair side milling all in one place, helping you shop for CAD CAM Blocks the quicker and easier way.

At DD Group we have realised that purchasing the correct blocks for your milling machine, deciphering the different codes and understanding which materials are right for you can be a minefield.

With this in mind we have created an interactive guide which explains the intricacies of each material and allows you to click the links below each product to take you straight to the order page.

[www.ddgroup.com](http://www.ddgroup.com)  
0800 585 586

This collection is interactive. Just **click the product code** below each item to shop and add to your basket!



### Quick reference guide:

Click the page number to go to each section

<b>Milling Machines &amp; Tooling</b>		VitaBLOCS	<b>Page 20</b>	Colado CAD	<b>Page 38</b>
PrograMill	<b>Page 4</b>	Grandios	<b>Page 21</b>	Viteo	<b>Page 40</b>
<b>Furnaces &amp; Vacuum pumps</b>		<b>Ivoclar PM</b>		<b>Stains &amp; Glazes</b>	
Programat	<b>Page 8</b>	Kits & Accessories	<b>Page 22</b>	Kits & Accessories	<b>Page 42</b>
<b>Cerec / Primescan</b>		e.Max CAD	<b>Page 24</b>	Empress Universal	<b>Page 44</b>
Kits & Accessories	<b>Page 10</b>	Empress CAD	<b>Page 26</b>	E.max CAD	<b>Page 46</b>
e.Max CAD	<b>Page 12</b>	<b>Lab Standard Discs</b>		E.max Zircad	<b>Page 50</b>
Empress	<b>Page 14</b>	Kits & Accessories	<b>Page 28</b>		
Telio	<b>Page 16</b>	e.Max Zircad	<b>Page 30</b>		
Tetric	<b>Page 16</b>	Telio CAD	<b>Page 32</b>		
Lava	<b>Page 18</b>	ProArt CAD	<b>Page 34</b>		
Brilliant Crios	<b>Page 19</b>	SR Vivodent CAD	<b>Page 36</b>		
Vita Enamic	<b>Page 20</b>	Ivobase CAD	<b>Page 37</b>		

[Discover our Block Shop range >>>](#)

### PrograMill PM3

Hybrid operation: Automatic change between wet and dry operation. 12-position tool changer automates tool usage for independent processing. Distortion free machine bed. Quick release system for millable materials. Intuitive touchscreen user interface with integrated CNC PC for convenient operation. High precision and consistent results. Intuitive and efficient operation. Intelligent machine management provides hands-off automation.

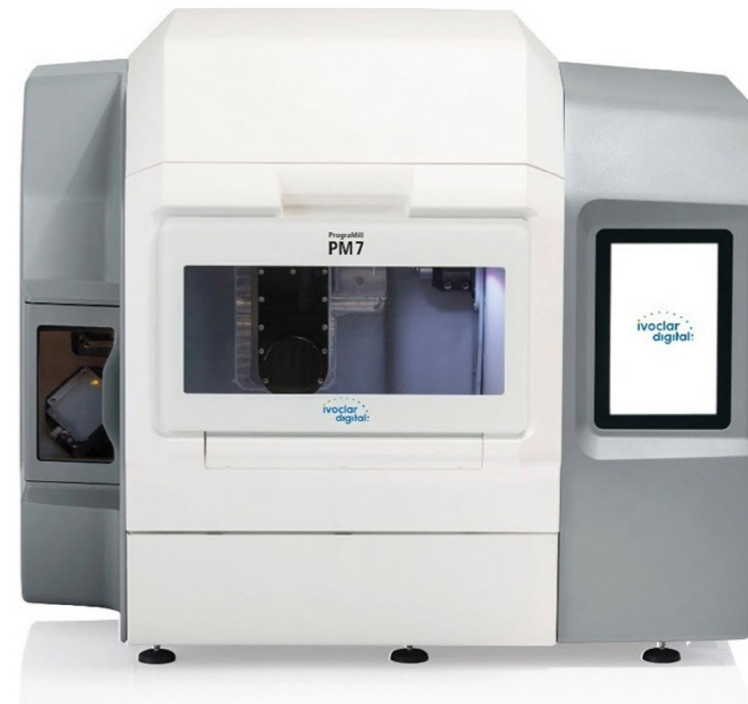
### PrograMill PM3

Hybrid operation: Automatic change between wet and dry operation. 12-position tool changer for independent processing. Fully automatic materials management via RFID technology. Distortion free machine bed. Quick release system for millable materials. Intuitive touchscreen user interface with integrated CNC PC for convenient operation. Automatic 8 way material changer allows for extended production. High precision and consistent results. Intuitive and efficient operation. Intelligent machine management provides hands-off automation.



### PrograMill PM7

Robust system hardware including servomotors and high power spindle. Hybrid operation: Automatic change between wet and dry operation. Integrated ionizer and automatic cleaning function. 20-position tool changer for independent processing. Automatic 8-material changer utilizing RFID technology. Intuitive user interface for convenient operation. Distortion free machine bed. Quick release system for millable materials. 970 Watts of power provides excellent milling of a wide spectrum of materials. Integrated CNC PC and intelligent machine management.



Now available at DD. For more information please contact us on **0800 585 585** or email **digitalsales@ddgroup.com**

### PrograMill One System

PrograMill One is the world's smallest 5-axis milling machine. It combines industrial manufacturing quality with high precision and modern design. In the innovative 5-axis turn-milling technique, the workpiece rotates around the tool.

QWI001



### PrograMill Tool Red g1.2 For One

A selection of tools gives users a variety of processing possibilities. PrograMill tools for One are specifically designed for different CAD/CAM materials and colour coded by means of a ring on the shaft.

QWI014



### PrograMill Tool Red g0.5 For One

A selection of tools gives users a variety of processing possibilities. PrograMill tools for One are specifically designed for different CAD/CAM materials and colour coded by means of a ring on the shaft.

QWI015



### PrograMill Filter for One

Replacement Filter for PrograMill One

QWI076



### PrograMill Fluid for One

PrograMill Fluid For PrograMill One

QWI077



This collection is interactive. Just **click the product code** below each item to shop and add to your basket!

### Programat CS2

The second generation of the Programat CS series is the ideal ceramic and crystallization furnace for dentists. The device has been specially developed for the crystallization of IPS e.max CAD restorations. The Programat CS2 is easily operated by means of the new colour touch screen and the proven membrane-sealed keypad. It is furthermore equipped with 20 individual programs as well as predefined Ivoclar Vivadent programs, such as the Speed program, which crystallizes IPS e.max CAD restorations in less than 15 minutes.



JDI153

### Programat CS4

Programat CS4 is the ideal sintering, crystallization and glazing furnace for dental practices. Programat CS4 is a compact multifunction furnace for dental practices. It is designed for sintering zirconia restorations, e.g. IPS e.max ZirCAD, using a temperature of up to 1,600 °C. The furnace can also be employed as a glazing and crystallization furnace for IPS e.max CAD and IPS Empress CAD restorations. The speed sintering program allows zirconia restorations to be manufactured directly in the dental practice in a single session.



JDI154

## Telio CAD for CEREC Starter Kit

Telio CAD are cross-linked PMMA blocks for the efficient fabrication of long-term temporaries. As a result of an optimized manufacturing process, the restorations feature a smooth surface that can be quickly and efficiently polished.

JDI120



## Tetric CAD for CEREC/ inLab Starter Kit

Tetric® CAD is an esthetic composite block for the efficient fabrication of indirect single-tooth restorations by means of the CAD/CAM technology.

JDI510



## Lava Ultimate Chairside Intro Kit

Lava Ultimate Restorative is designed for precision, speed and single-appointment efficiency. The resin nano ceramic material resists chipping and cracking when milled, even for demanding partial restoration shapes.

JDM102



## BRILLIANT Crios Intro Kit CEREC 14

BRILLIANT Crios is a reinforced composite bloc. Combining all the advantages of an innovative submicron hybrid composite material with those of a CAD/CAM fabrication process for reliable, aesthetic and fast restorations.

JDC002



## Grandio blocs Set

Nano-hybrid composite CAD/CAM Blocks. Resembles natural teeth perfectly – modulus of elasticity and surface hardness identical to natural tooth substance.

JDV300



This collection is interactive. Just **click the product code** below each item to shop and add to your basket!

## e.Max CAD

IPS e.max CAD is the world's best-selling glass-ceramic<sup>1</sup>. It is suitable for the efficient fabrication of full-contour restorations and it is known for its versatile application options, comprehensive range of indications and for its high strength of 530 MPa<sup>2</sup>.

Both its aesthetic properties and durability have been confirmed in everyday clinical practice. As a result, the material can be used to fashion full-contour crowns of only 1-mm thickness, which are subsequently seated with the adhesive technique.



## Shade

Size	BL1	BL2	BL3	BL4	A1	A2	A3	A3.5	A4	B1	B2	B3	B4	C1	C2	C3	C4	D2	D3	D4
	HT (High Translucency)																			
I12	JDI207	JDI208	JDI209	JDI210	JDI175	JDI176	JDI177	JDI178	JDI179	JDI180	JDI181	JDI182	JDI183	JDI184	JDI185	–	–	JDI188	JDI189	JDI190
C14	–	JDI212	JDI213	JDI214	JDI191	JDI192	JDI193	JDI194	JDI195	JDI196	JDI197	JDI198	JDI199	JDI200	JDI201	JDI202	JDI203	JDI204	JDI205	–
	MT (Medium Translucency)																			
C14	–	JDI504	JDI505	–	JDI500	JDI501	JDI502	JDI178	JDI179	JDI503	–	–	–	–	–	–	–	–	–	–
	LT (Low Translucency)																			
I12	JDI087	JDI088	–	–	JDI060	JDI061	JDI062	JDI063	JDI069	JDI064	JDI065	JDI066	JDI070	JDI071	JDI067	JDI072	JDI073	JDI074	JDI068	JDI075
C14	JDI089	JDI090	JDI400	JDI401	JDI076	JDI077	JDI078	JDI079	JDI085	JDI080	JDI081	JDI082	JDI086	JDI402	JDI083	JDI403	JDI404	JDI405	JDI084	JDI406
A16 (S)	–	JDI313	–	–	JDI314	JDI315	JDI316	JDI317	–	JDI318	JDI319	–	–	JDI320	JDI321	–	–	JDI478	–	–
A16 (L)	–	–	–	–	JDI322	JDI480	JDI481	JDI482	–	JDI323	JDI484	–	–	JDI485	JDI486	–	–	JDI487	–	–
B32	–	–	–	–	JDI490	JDI491	JDI492	JDI493	–	JDI494	JDI495	–	–	JDI496	JDI497	–	–	JDI498	–	–
	MO (Medium Opacity)																			
	0	1	2	3	4	–	–	–	–	–	–	–	–	–	–	–	–	–	–	–
A14 (S)	JDI460	JDI461	JDI462	JDI463	JDI464	–	–	–	–	–	–	–	–	–	–	–	–	–	–	–
A14 (L)	JDI465	JDI466	JDI467	JDI468	JDI469	–	–	–	–	–	–	–	–	–	–	–	–	–	–	–
C14	JDI450	JDI451	JDI452	JDI453	JDI454	–	–	–	–	–	–	–	–	–	–	–	–	–	–	–

Shade

Empress

IPS Empress CAD are leucite-reinforced high-performance blocks for the CAD/CAM technology. With its homogeneity and light scattering behaviour, IPS Empress CAD provides a balanced chameleon effect.

Suitable for the fabrication of all-ceramic inlays, onlays, veneers, and crowns by means of CAD/CAM.

Size	BL1	BL2	BL3	BL4	A1	A2	A3	A3.5	A4	B1	B2	B3	B4	C1	C2	C3	C4	D2	D3	D4
	HT (High Translucency)																			
I8	-	-	-	-	JDI030	JDI031	JDI032	-	-	JDI034	JDI035	-	-	-	JDI037	-	-	-	-	-
I10	-	-	-	-	JDI019	JDI021	JDI022	JDI023	-	-	-	-	-	-	JDI117	-	-	-	-	-
I12	-	-	-	-	JDI027	JDI024	JDI025	JDI026	-	JDI145	JDI146	JDI147	-	-	JDI148	-	-	-	-	-
	LT (Low Translucency)																			
I10	-	JDI161	JDI162	JDI163	JDI039	JDI040	JDI041	JDI042	-	JDI043	JDI044	JDI045	-	-	JDI046	-	-	-	-	-
I12	JDI164	-	JDI166	JDI167	JDI048	JDI049	JDI050	JDI051	-	JDI056	JDI057	-	-	-	-	-	-	-	-	-
C14	-	JDI169	JDI170	JDI171	JDI055	JDI052	JDI053	JDI054	-	JDI155	JDI156	-	-	-	JDI158	-	-	-	JDI159	-
	Multi																			
I12	JDI108	-	JDI109	-	JDI094	JDI095	JDI096	JDI093	-	JDI097	-	-	-	-	-	-	-	-	-	-
C14	JDI110	-	JDI111	-	JDI098	JDI100	JDI101	JDI102	-	JDI099	-	-	-	-	-	-	-	-	-	-
C14L	-	-	JDI113	-	JDI103	JDI104	JDI105	JDI106	-	JDI107	-	-	-	-	-	-	-	-	-	-





## Telio

Telio CAD are cross-linked PMMA blocks for the efficient fabrication of long-term temporaries.



## Tetric

Tetric® CAD is an esthetic composite block for the efficient fabrication of indirect single-tooth restorations by means of the CAD/CAM technology.



## Shade

Size	BL1	BL2	BL3	BL4	A1	A2	A3	A3.5	A4	B1	B2	B3	B4	C1	C2	C3	C4	D2	D3	D4
	LT (Low Translucency)																			
B40L/9	-	-	JDI121	-	JDI122	JDI123	JDI124	JDI125	-	JDI126	-	-	-	-	-	-	-	-	-	-
B40L/3	-	-	JDI127	-	JDI128	JDI129	JDI130	JDI131	-	JDI132	-	-	-	-	-	-	-	-	-	-
B55/1	-	-	JDI133	-	JDI134	JDI135	JDI136	JDI137	-	JDI138	-	-	-	-	-	-	-	-	-	-
B55/3	-	-	JDI139	-	JDI140	JDI141	JDI142	-	-	JDI144	-	-	-	-	-	-	-	-	-	-
A16(S)	-	-	JDI301	-	JDI302	JDI303	JDI304	JDI305	-	JDI306	-	-	-	-	-	-	-	-	-	-
A16(L)	-	-	JDI307	-	JDI308	JDI309	JDI310	JDI311	-	JDI312	-	-	-	-	-	-	-	-	-	-

## Shade

Size	BL1	BL2	BL3	BL4	A1	A2	A3	A3.5	A4	BL	B2	B3	B4	C1	C2	C3	C4	D2	D3	D4
	HT (High Translucency)																			
I12	-	-	-	-	JDI511	JDI512	JDI513	JDI514	-	-	-	-	-	-	-	-	-	-	-	-
C14	-	-	-	-	JDI520	JDI521	JDI522	JDI523	-	-	-	-	-	-	-	-	-	-	-	-
	MT (Medium Translucency)																			
I12	-	-	-	-	JDI515	JDI516	JDI517	JDI518	-	JDI519	-	-	-	-	-	-	-	-	-	-
C14	-	-	-	-	JDI524	JDI525	JDI526	JDI527	-	JDI528	-	-	-	-	-	-	-	-	-	-

## Lava

3M™ Lava™ Ultimate Restorative is the world’s first resin nano ceramic restorative with the benefits of both glass ceramic and resin materials. Lava Ultimate Restorative gives chairside CAD/CAM dentists better edge quality and smooth margins for a brilliant restoration. It’s an advance that improves productivity and creates a better restorative experience for patients. 3M science makes the difference 3M scientists and engineers combined nanotechnology with a proprietary curing treatment to create a unique material with the benefits of both glass ceramics and resins: High flexural strength (2 MPa) Excellent wear resistance, even to opposing enamel Brilliant and long lasting polish.



### Shade

Size	BL	A1	A2	A3	A3.5	B1	C2	D2
HT (High Translucency)								
112	-	-	JDM134	JDM138	-	-	-	-
14L	-	JDM106	JDM110	JDM114	-	JDM120	-	-
LT (Low Translucency)								
112	JDM128	JDM132	JDM136	JDM140	JDM142	JDM146	JDM148	JDM150
C14	JDM104	JDM108	JDM112	JDM116	JDM118	JDM122	JDM124	JDM126

## Brilliant Crios

BRILLIANT Crios is a reinforced composite. The material combines all the advantages of an innovative submicron hybrid composite material with those of a CAD/CAM fabrication process for reliable, aesthetic and fast restorations without a separate firing process. Consistently controlled fabrication with constant thermal curing, gives the reinforced composite excellent mechanical properties. Two sizes and two translucencies with 13 shades offer a broad range for a daily use in the dental practice.



### Shade

Size	BL	A1	A2	A3	A3.5	B1	B2	B3	C2
HT (High Translucency)									
12	-	JDC027	JDC028	JDC029	-	-	-	-	-
14	-	JDC014	JDC015	JDC016	-	JDC017	-	-	-
LT (Low Translucency)									
12	JDC018	JDC019	JDC020	JDC021	JDC022	JDC023	JDC024	JDC025	JDC026
14	JDC005	JDC006	JDC007	JDC008	JDC009	JDC010	JDC011	JDC012	JDC013

## Vita Enamic Mono

## Vita Enamic

## VitaBLOCS

## Grandios

Dental hybrid ceramic with a dual network structure. The dominant ceramic network is strengthened by a polymer network, with both networks fully integrated with one another. In addition to a high degree of elasticity, this hybrid ceramic guarantees particularly high load capacity after adhesive bonding.

Highest filler content (86 % w/w). Resembles natural teeth perfectly. Excellent physical values for flexural strength and abrasion. No firing required. Can be processed using any conventional milling unit. Can be polished and repaired optimally. Ideal for grinding even in cases with thin edges.



Size	Shade	
	1M1	1M2
14	HT (High Translucency)	
	JDV220	JDV225

Size	Shade		
	1M	2M	3M
14	2H		
	-	JDV120	JDV115
14	2T		
	-	JDV110	JDV105
14	1HT		
	JDV200	-	-
14	2HT		
	JDV205	-	-

Size	Shade		
	1M	2M	3M
12	1C		
	-	JDV025	-
14	2C		
	-	-	JDV070
8	2C		
	-	JDV030	-
12	2C		
	-	JDV040	JDV075
14	2C		
	JDV020	JDV045	JDV080
14	3C		
	-	JDV060	JDV095

Size	Shade							
	BL	A1	A2	A3	A3.5	B1	C2	Mixed
12	HT (High Translucency)							
	-	JDV301	JDV303	JDV305	JDV307	-	-	-
14L	HT (High Translucency)							
	-	JDV313	JDV315	JDV317	JDV319	-	-	-
12	LT (Low Translucency)							
	JDV310	JDV302	JDV304	JDV306	JDV308	JDV309	JDV311	-
14L	LT (Low Translucency)							
	JDV322	JDV314	JDV316	JDV318	JDV320	JDV321	JDV323	-
12	Mixed							
	-	-	-	-	-	-	-	JDV312
14L	Mixed							
	-	-	-	-	-	-	-	JDV324



### IPS e.max CAD PrograMill Labside Starter Kit

IPS e.max CAD is the versatile and reliable lithium disilicate glass-ceramic for CAD/CAM applications in the dental laboratory and the dental practice.



JDI613

### IPS Empress CAD for PrograMill - Labside Starter Kit

IPS Empress CAD are leucite-reinforced glass-ceramic blocks. They have brilliant light-optical properties. Due to its flexural strength of 185 MPa\*, IPS Empress CAD gives all-ceramic, single-tooth restorations a high degree of stability.



JDI860

## e.Max CAD

IPS e.max CAD is the world's best-selling glass-ceramic<sup>1</sup>. It is suitable for the efficient fabrication of full-contour restorations and it is known for its versatile application options, comprehensive range of indications and for its high strength of 530 MPa<sup>2</sup>.

Both its aesthetic properties and durability have been confirmed in everyday clinical practice. As a result, the material can be used to fashion full-contour crowns of only 1-mm thickness, which are subsequently seated with the adhesive technique.



## Shade

Size	BL1	BL2	BL3	BL4	A1	A2	A3	A3.5	A4	B1	B2	B3	B4	C1	C2	C3	C4	D2	D3	D4
<b>HT (High Translucency)</b>																				
I12	JDI668	JDI669	JDI670	JDI671	JDI672	JDI673	JDI674	JDI675	JDI676	JDI677	JDI678	JDI679	JDI680	JDI681	JDI682	JDI683	JDI684	JDI685	JDI686	JDI687
C14	JDI688	JDI689	JDI690	JDI691	JDI692	JDI693	JDI694	JDI695	JDI696	JDI697	JDI698	JDI699	JDI700	JDI701	JDI702	JDI703	JDI704	JDI705	JDI706	JDI707
<b>MT (Medium Translucency)</b>																				
C14	–	JDI661	JDI662	JDI663	JDI664	JDI665	JDI666	–	–	JDI667	–	–	–	–	–	–	–	–	–	–
<b>LT (Low Translucency)</b>																				
C14	JDI621	JDI622	JDI623	JDI624	JDI625	JDI626	JDI627	JDI628	JDI629	JDI630	JDI631	JDI632	JDI633	JDI634	JDI635	JDI636	JDI637	JDI638	JDI639	JDI640
C16	–	JDI641	–	–	JDI642	JDI643	JDI644	JDI645	–	JDI646	JDI647	–	–	JDI648	JDI649	–	–	JDI650	–	–
B32	–	JDI651	–	–	JDI652	JDI653	JDI654	JDI655	–	JDI656	JDI657	–	–	JDI658	JDI659	–	–	JDI660	–	–
<b>MO (Medium Opacity)</b>																				
	<b>0</b>	<b>1</b>	<b>2</b>	<b>3</b>	<b>4</b>	–	–	–	–	–	–	–	–	–	–	–	–	–	–	–
C14	JDI616	JDI617	JDI618	JDI619	JDI620	–	–	–	–	–	–	–	–	–	–	–	–	–	–	–
<b>IMPULSE</b>																				
C14	–	JDI614	JDI615	–	–	–	–	–	–	–	–	–	–	–	–	–	–	–	–	–

## Empress CAD

IPS Empress CAD are leucite-reinforced high-performance blocks for the CAD/CAM technology. With its homogeneity and light scattering behaviour, IPS Empress CAD provides a balanced chameleon effect.

Suitable for the fabrication of all-ceramic inlays, onlays, veneers, and crowns by means of CAD/CAM.



## Shade

Size	BL1	BL2	BL3	BL4	A1	A2	A3	A3.5	A4	B1	B2	B3	B4	C1	C2	C3	C4	D2	D3	D4
	LT (Low Translucency)																			
I12	–	–	–	–	JDI861	JDI862	JDI863	JDI864	–	JDI865	JDI866	JDI867	–	–	JDI868	–	–	–	JDI869	–
C14	JDI870	JDI871	JDI872	JDI873	JDI874	JDI875	JDI876	JDI877	–	JDI878	JDI879	JDI880	–	–	JDI881	–	–	–	JDI882	–
	Multi																			
C14(L)	JDI883	–	JDI884	–	JDI885	JDI886	JDI887	JDI888	–	JDI889	–	–	–	–	–	–	–	–	–	–

This collection is interactive.  
Just **click the product code**  
below each item to shop and  
add to your basket!



## IPS e.max ZirCAD Disc Intro Kit

IPS e.max ZirCAD are innovative zirconium oxide discs. Choose IPS e.max ZirCAD when high mechanical strength, low wall thicknesses and very high esthetics are required.

JDI708



## IPS e.max ZirCAD Disc Intro Kit with Prime

This revolutionary material is characterized by exceptional quality and esthetics. It is produced using the Gradient Technology (GT), a new, unique manufacturing technique.

JDI359



## Telio CAD Disc Intro Kit

Telio CAD are cross-linked PMMA discs. This material allows you to produce temporary crowns & bridges. The industrial polymerization process makes the material very homogeneous.

JDI560



## IvoBase CAD Bond Kit

The self-curing two-component system ensures a strong bond between the dental arch and the milled denture base.

JDI592



## CAD/CAM Labside Disc Starter Kit

A selection of CAD/CAM materials available in disc form for various applications in dental technology. Suitable for those who would like to get to know the Ivoclar Digital materials.

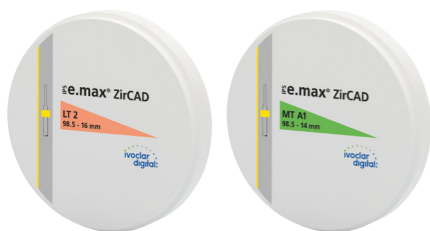
JDI612



This collection is interactive. Just **click the product code** below each item to shop and add to your basket!

## e.Max Zircad

IPS e.max ZirCAD is the material of choice for cases in which high mechanical stability, thin restoration walls and natural-looking esthetics are of the essence. It is exactly with regard to these aspects that the IPS e.max zirconium oxide portfolio sets new standards. Restorations with considerably reduced wall thicknesses can be created as the material provides both high strength, ranging from 850 to 1,200 MPa<sup>1</sup>, and high fracture toughness. A trade-off in translucency is not required.



Size	BL	BL1	A1	A2	A3	B1	B2	C2	D2	0	1	2	3	4	sun	sun chroma
<b>MT (Medium Translucency)</b>																
14mm	JDI783	–	JDI784	JDI785	JDI786	JDI787	JDI788	JDI789	JDI790	–	–	–	–	–	–	–
18mm	JDI791	–	JDI792	JDI793	JDI794	JDI795	JDI796	JDI797	JDI798	–	–	–	–	–	–	–
<b>LT (Low Translucency)</b>																
10mm	–	–	–	–	–	–	–	–	–	JDI734	JDI735	JDI736	JDI737	JDI738	JDI739	JDI740
12mm	–	–	–	–	–	–	–	–	–	JDI741	JDI742	JDI743	JDI744	JDI745	JDI746	JDI747
14mm	–	–	–	–	–	–	–	–	–	JDI748	JDI749	JDI750	JDI751	JDI752	JDI753	JDI754
16mm	–	–	–	–	–	–	–	–	–	JDI755	JDI756	JDI757	JDI758	JDI759	JDI760	JDI761
18mm	–	–	–	–	–	–	–	–	–	JDI762	JDI763	JDI764	JDI765	JDI766	JDI767	JDI768
20mm	–	–	–	–	–	–	–	–	–	JDI769	JDI770	JDI771	JDI772	JDI773	JDI774	JDI775
25mm	–	–	–	–	–	–	–	–	–	JDI776	JDI777	JDI778	JDI779	JDI780	JDI781	JDI782
<b>Multi</b>																
16mm	–	JDI799	JDI800	JDI801	JDI802	–	–	–	–	–	–	–	–	–	–	–
20mm	–	JDI803	JDI804	JDI805	JDI806	–	–	–	–	–	–	–	–	–	–	–
<b>MO (Medium Opacity)</b>																
10mm	–	–	–	–	–	–	–	–	–	JDI709	JDI710	JDI711	JDI712	JDI713	–	–
14mm	–	–	–	–	–	–	–	–	–	JDI714	JDI715	JDI716	JDI717	JDI718	–	–
18mm	–	–	–	–	–	–	–	–	–	JDI719	JDI720	JDI721	JDI722	JDI723	–	–
20mm	–	–	–	–	–	–	–	–	–	JDI724	JDI725	JDI726	JDI727	JDI728	–	–
25mm	–	–	–	–	–	–	–	–	–	JDI729	JDI730	JDI731	JDI732	JDI733	–	–



## e.Max Zircad Prime

The revolutionary material ensures exceptional quality and esthetics. This is made possible by the Gradient Technology – a new, innovative manufacturing technique used in the production of the material. It is the key to outstanding quality.



### Size

16mm  
20mm

	BL1	BL2	BL3	BL4	A1	A2	A3	A3.5	A4	B1	B2	B3	B4	C1	C2	C3	C4	D2	D3	D4
16mm	JDI360	JDI361	JDI362	JDI363	JDI364	JDI365	JDI366	JDI367	JDI368	JDI369	JDI370	JDI371	JDI372	JDI373	JDI374	JDI375	JDI376	JDI377	JDI378	JDI379
20mm	JDI380	JDI381	JDI382	JDI383	JDI384	JDI385	JDI386	JDI387	JDI388	JDI389	JDI390	JDI391	JDI392	JDI393	JDI394	JDI395	JDI396	JDI397	JDI398	JDI399

## Telio CAD

Suitable for a wide range of indications including temporary crowns, temporary bridges with up to 2 connected pontics, and implant-supported temporary hybrid abutment crowns.



### Size

16mm  
20mm  
25mm

	BL1	BL2	BL3	BL4	A1	A2	A3	A3.5	A4	B1	B2	B3	B4	C1	C2	C3	C4	D2	D3	D4
	LT (Low Translucency)																			
16mm	–	–	JDI561	–	JDI562	JDI563	JDI564	JDI565	–	JDI566	–	JDI567	–	–	JDI568	–	–	JDI569	–	–
20mm	–	–	JDI570	–	JDI571	JDI572	JDI573	JDI574	–	JDI575	–	JDI576	–	–	JDI577	–	–	JDI578	–	–
25mm	–	–	JDI579	–	JDI580	JDI581	JDI582	JDI583	–	JDI584	–	JDI585	–	–	JDI586	–	–	JDI587	–	–

## Shade

## Shade

## ProArt CAD wax

ProArt CAD Model discs are made from a dimensionally stable, easy to mill polyurethane material. Ideal for making CAD/CAM arch models which are virtually unbreakable and keep their shape. These blanks are easy to mill and because the chips are of uniform size, gentle on the extractor. This disc is available in a 20 mm thickness and millable on the PrograMill PM3, PM5, and PM7.



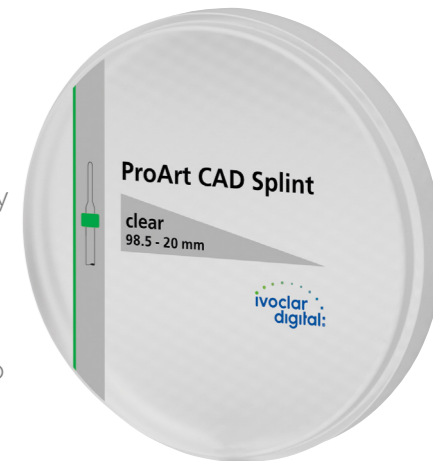
### Shade

Size	Yellow	Blue	Pink	Beige	Try-in White	Transfer White	Clear
10mm	-	-	-	-	-	JDI609	-
12mm	-	JDI604	-	-	-	-	-
16mm	JDI602	-	-	-	-	-	JDI610
20mm	JDI603	JDI605	-	-	-	-	-
25mm	-	-	-	JDI607	-	-	-
30mm	-	-	JDI606	-	JDI608	-	-

## ProArt CAD Splint clear

The process-supporting ProArt CAD discs serve to transform conventional working steps in the laboratory into entirely digital processes. The dimensionally stable polymer and wax discs are easy to mill. As CAD/CAM auxiliary materials, they cover a wide range of indications.

Discs made from a clear PMMA material. They are used to produce occlusal splints, e.g. for the treatment of bruxism. Drilling templates for implants can also be produced from the discs.



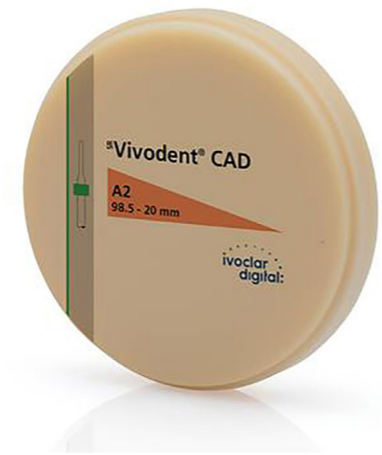
### Shade

Size	Splint
20mm	JDI611

## SR Vivodent CAD

SR Vivodent CAD are tooth-coloured discs made from DCL material which are suitable for the individual design and production of whole tooth segments. The long-lasting dental restorations are individually customized to integrate with the patient's natural antagonist teeth.

The material is distinguished by its natural fluorescence and translucency. The material's excellent esthetics can be attributed to three main factors: the low opacity of the material in combination with the anatomical shape of the teeth and their natural surface design.



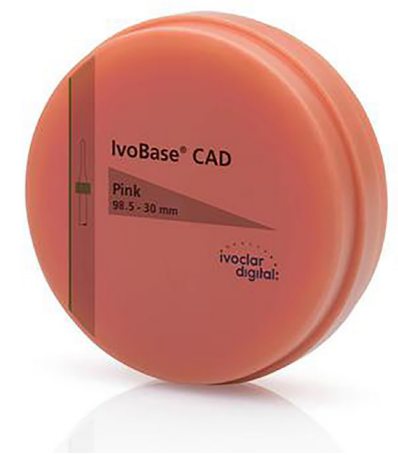
### Shade

Size	BL3	A1	A2	A3	A3.5	B1	B3	C2	D2
20mm	JDI593	JDI594	JDI595	JDI596	JDI597	JDI598	JDI599	JDI600	JDI601

## Ivobase CAD

IvoBase CAD are PMMA discs for the production of denture bases. The shades of IvoBase CAD match the denture base material IvoBase and cover the most popular shade requirements.

The PMMA material is distinguished by its high impact quality. This enhances the fracture strength and increases the longevity of the restoration. In addition, the industrial manufacturing process ensures homogeneous material quality. As a result porosities and air inclusions in the material can be avoided, which results in a high-quality denture base.



### Shade

Size	Pink	Pink-V	Pref	34-V
30mm	JDI588	JDI589	JDI590	JDI591

## Colado CAD CoCr4

Colado CAD Cocr4 are discs made from a cobalt-chromium alloy. With these discs, it is possible to create a variety of restorations including implant-supported superstructures, full-contour crowns and bridges and frameworks for veneering.

### Size

8mm	JDI890
10mm	JDI891
12mm	JDI892
13.5mm	JDI893
15mm	JDI894
18mm	JDI895
20mm	JDI896
24.5mm	JDI897



## Colado CAD Ti5

Colado CAD Ti5 are discs made from a titanium alloy. Use these discs to mill crowns, large-span bridges and implant-supported superstructures.

### Size

8mm	JDI898
10mm	JDI899
12mm	JDI900
13.5mm	JDI901
15mm	JDI902
18mm	JDI903
20mm	JDI904



## Colado CAD Ti2

Pure titanium discs, suitable for the production of crowns and bridges for the anterior and posterior region. Depending on the situation and the indication, the light-curing laboratory composite SR Nexco® can be used to veneer the restorations.

### Size

8mm	JDI905
10mm	JDI906
12mm	JDI907
13.5mm	JDI908
15mm	JDI909



## Viteo Base Ti

Viteo Base is the titanium bonding base from the materials specialist. Viteo Base is suitable for the fabrication of implant-supported single-tooth restorations.



### Size

NB-NA 3.5	JDI910
NB-NA 4.3	JDI911
NB-NA 5.0	JDI912
BI-OC 3.4	JDI913
BI-OC 4.1	JDI914
BI-OC 5.0	JDI915
AT-OS 3.5	JDI916
AT-OS 4.5	JDI917

## Viteo Screw

Viteo Base is a titanium bonding base for implant-supported single-tooth restorations. The bonding surface with recessed rotation protection features a “soft edge” design and is suitable for use in conjunction with various CAD/CAM and pressable materials.



### Size

NB-NA 3	JDI918
NB-NA 4.3	JDI919
BI-OC 3.4/4.1/5.0	JDI920
AT-OS 3.5	JDI921
AT-OS 4.5	JDI922

## Viteo Base Trimmer

### Size

SD	JDI923
MD	JDI924



## Viteo Base Press Sleeve

### Size

SD	JDI925
MD	JDI926



## Viteo Holder Refill

JDI927



## IPS Contrast Spray Chairside Refill Cannulas

IPS Contrast Spray Chairside

JDI003



## IPS Ceramic Etching Gel Red

Used for the creation of retentive bonding surfaces for the composite cementation technique. It enhances the bonding effect between the composite cement and the ceramic bonding surface.

JDI004



## IPS Empress Veneer Kit

Contains the most popular Wash pastes and layering materials for the veneering of IPS Empress restorations (Esthetic & CAD).

JDI242



## IPS Neutralising Powder

Used for the creation of retentive bonding surfaces for the composite cementation technique.

JDI005



## IPS e.max ZirCAD LT Colouring Liquid Starter Kit

IPS e.max ZirCAD Colouring Liquids are ready-to-use, aqueous metallic salt solutions for colouring unsintered restorations made of IPS e.max ZirCAD MT BL and LT.

JDI807



## IPS e.max ZirCAD MT Colouring Liquid Starter Kit


IPS e.max ZirCAD Colouring Liquids are ready-to-use, aqueous metallic salt solutions for colouring unsintered restorations made of IPS e.max ZirCAD MT BL and LT.

JDI808



## Empress Universal Shades


Used for the exact reproduction of the Chromascop and A-D shades.

Shade	3g
	
A2/3/3.5	JDI261
A4	JDI262
B1	JDI263
B2/B3/B4	JDI264
C1/C2	JDI265
C3/C4	JDI266
D2/D3	JDI267
D4	JDI268
1	JDI283
2	JDI284



## Empress Universal Stains

Intensive stains are used to imitate natural characteristics. With the three complementary shades basic blue, basic red and basic yellow, the shades may be individually adjusted.

Shade	1g
	
Black	JDI270
Khaki	JDI272
Grey	JDI274
Vanilla	JDI275
Olive	JDI277
Yellow	JDI278
Base Yellow	JDI280
Base Red	JDI281
Maroon	JDI282
Base Blue	JDI279
Crackli	JDI276
Mahagoney	JDI271
Orange	JDI273
White	JDI269



## E.max CAD Shades

Dentin stains in paste form that are optimally coordinated with IPS e.max CAD. Can be applied both on “blue” or crystallized restorations.

### Shade

3g

1	JDI221
2	JDI222
3	JDI223
4	JDI224
11	JDI225
12	JDI226



## E.max CAD Stains

Intensive stains in paste form. They may be applied both on “blue” or crystallized restorations.

### Shade

1g

Creme	JDI228
Khaki	JDI232
Mahagoney	JDI233
Olive	JDI231
White	JDI227
Sunset	JDI229
Copper	JDI230





## E.max CAD Glaze Liquid 15ml

Special liquid to dilute IPS e.max CAD Crystall./Shades and Stains and the Glaze Paste.

JDI237



## E.max CAD Glaze Paste 3g

Special glaze paste to be used with fully anatomical IPS e.max CAD restorations. It may be applied either prior to crystallization on the "blue" crown or in the subsequent firing cycle.

JDI234



## E.max CAD Glaze Spray 270ml

Special glaze spray to be applied on restorations once IPS e.max CAD Crystall Shades and Stains have been applied. The restorations are fired in a combined crystallisation and glaze firing cycle.

JDI235



## E.max CAD Add-On - Incisal 5g

For adjustments, such as proximal or occlusal contact points. These adjustments can be made directly with the crystallization firing or in a subsequent corrective firing cycle.

JDI236



## E.max CAD Crystallization Tray

Silicon nitride firing tray for the crystallization of IPS e.max CAD restorations. The Crystallization pins supplied are required for the crystallization of IPS e.max CAD LT restorations.

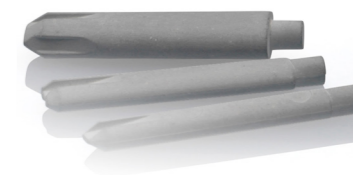
JDI239



## E.max CAD Crystallization Pins

Refill of Small, Medium and Large pins for use with Crystallization Tray.

JDI240



## E.max ZirCAD Colouring Liquid

Staining solution for IPS e.max ZirCAD MT by way of brush infiltration before the sintering process. These colouring liquids are available in 16 A-D tooth shades for easy and individual customisation.

## E.max ZirCAD Colouring Liquid Indicator

Take the guess work out of zirconia stain infiltration with these liquids. ZirCAD colour Liquid concentrates can be mixed with ZirCAD MT and LT colouring liquids to render the infiltration of ZirCAD restorations visible.

Shade	15ml
Yellow	JDI852
Red	JDI853
Blue	JDI854

## E.max ZirCAD Colouring Liquid Diluter

The IPS e.max ZirCAD Colouring Liquid Diluter is a liquid for diluting the IPS e.max ZirCAD Colouring Liquids. This allows colouring liquids with a lower shading power to be produced, which results in lighter tones.

60ml
JDI855



Size	A1	A2	A3	A3.5	A4	B1	B2	B3	B4	C1	C2	C3	C4	D2	D3	D4	Blue	Violet	Grey	Orange	Brown	Purple
	<b>MT (Medium Translucency)</b>																					
60ml	JDI831	JDI832	JDI833	JDI834	JDI835	JDI836	JDI837	JDI838	JDI839	JDI840	JDI841	JDI842	JDI843	JDI844	JDI845	JDI846	-	-	-	-	-	-
15ml	-	-	-	-	-	-	-	-	-	-	-	-	-	-	-	-	JDI847	JDI848	JDI849	JDI850	JDI851	-
	<b>LT (Low Translucency)</b>																					
60ml	JDI809	JDI810	JDI811	JDI812	JDI813	JDI814	JDI815	JDI816	JDI817	JDI818	JDI819	JDI820	JDI821	JDI822	JDI823	JDI824	-	-	-	-	-	-
15ml	-	-	-	-	-	-	-	-	-	-	-	-	-	-	-	-	JDI825	JDI826	JDI827	JDI828	JDI829	JDI830