



# Restoratives

[Click the product codes to view more information](#)

## Excavators



### 121/122 DE

Octagonal handle. Each.  
DEN154



### 125/126 DE

Round or Octagonal handle. Each.  
DEN110, DEN150, DEN156



### 129/130 DE

Round or Octagonal handle. Each.  
DEN113, DEN152, DEN158



### 123/124 DE

Octagonal handle. Each.  
DEN108, DEN155



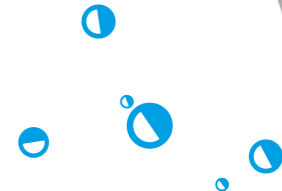
### 127/128 DE

Round or Octagonal handle. Each.  
DEN111, DEN151, DEN157



### 131/132 DE

Round or Octagonal handle. Each.  
DEN114, DEN153, DEN159



# Excavators



## 133/134 DE

Octagonal handle. Each.  
DEN160



## 153/154 DE

Octagonal handle. Each.  
DEN116, DEN161



## 157/158 DE

Octagonal handle. Each.  
DEN122



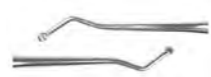
## 145/146 DE

Octagonal handle. Each.  
DEN115



## 155/156 DE

Octagonal handle. Each.  
DEN119



## 159/160 DE

Octagonal handle. Each.  
DEN123



## 125/126 - Single use

Pack 10.  
DIE125

# Plastic Filling Instruments



## 1 Flat Plastic DE

Octagonal handle. Each.  
DPF101, DPF361



## 6 Flat Plastic DE

Round or Octagonal handle. Each.  
DPF106, DPF360



## 49 Flat Plastic DE

Octagonal handle. Each.  
DPF125, DPF352, DPF363



## 178 Flat Plastic DE

Octagonal handle. Each.  
DPF368



## 153 Plugger DE

Octagonal handle. Each.  
DPF130, DPF364



## 2 Flat Plastic DE

Octagonal handle. Each.  
DPF370



## 18 Flat Plastic DE

Octagonal handle. Each.  
DPF362



## 156 Flat Plastic DE

Round or Octagonal handle. Each.  
DPF136, DPF356, DPF367



## 179 Flat Plastic DE

Round or Octagonal handle. Each.  
DPF160, DPF358, DPF369



## 154 Plugger DE

Octagonal handle. Each.  
DPF132, DPF365

# Plastic Filling Instruments



## 1L Burnisher DE

Round or Octagonal handle. Each.

DBU110, DBU151, DBU161



## 18 Burnisher DE

Round or Octagonal handle. Each.

DPF118, DPF350



## 2 Burnisher Thymozin SE

Octagonal handle. Each.

DPF192



## PF10 Burnisher DE

Octagonal handle. Each.

DPF110



## 1/2 Blacks Amalgam Plugger

Octagonal handle. Each.

DPL112, DPL121



## 1 Burnisher DE

Round or Octagonal handle. Each.

DBU105, DBU150, DBU160



## 155 Burnisher DE

Round or Octagonal handle. Each.

DPF134, DPF354, DPF366



## 3 Burnisher Thymozin SE

Octagonal handle. Each.

DPF193



## 0/1 Blacks Amalgam Plugger

Octagonal handle. Each.

DPL111, DPL120



## PFI-6 - Single use

Pack 10.

DIP106



## 155 Burnisher Single use

Pack 10.

DIP155



## 154 Plugger - Single use

Pack 10.

DIP154



## PFI-156 Plugger - Single use

Pack 10.

DIP156



# Composite Instruments



**1/2 Blacks Amalgam Plugger**  
Silicone handle. Each.  
DPL114



**1L Burnisher DE**  
Silicone handle. Each.  
DBU111



**6 Plastic DE**  
Silicone handle. Each.  
DPF107



**155 Plastic DE**  
Silicone handle. Each.  
DPF135



**179 Plastic DE**  
Silicone handle. Each.  
DPF161



**1 Burnisher DE**  
Silicone handle. Each.  
DBU106



**1 Plastic DE**  
Silicone handle. Each.  
DPF102



**49 Plastic DE**  
Silicone handle. Each.  
DPF126



**178 Plastic DE**  
Silicone handle. Each.  
DPF159



**Plastic Assortment**  
Pack 5.  
DCO600

# Carvers



**Le Cron's DE**  
Round handle. Each.  
DCC150



**2 Wards DE**  
Octagonal or Round Handle. Each.  
DCC185, DCC192, DCC194



**3-1/2 Hollenbach DE**  
Octagonal or Round Handle. Each.  
DCC130, DCC196, DCC208



**2 Wards DE**  
Single use. Pack 10.  
DIC102



**1 Wards DE**  
Round or Octagonal handle. Each.  
DCC180, DCC191, DCC193



**3 Hollenbach DE**  
Octagonal or Round Handle. Each.  
DCC125, DCC195, DCC207



**4 Osteo-Mitchell DE**  
Octagonal or Round Handle. Each.  
DCC170, DCC198, DCC197



# Bonds & Accessories



**Unolux Mono Bond Kit**  
Light-curing single component adhesive for enamel. Requires no mixing. 3 x 3ml and accessories.  
FBD086



Best Seller

**UnoBond 5**  
5th Generation Bonding Adhesive Light-Curing Bonding Adhesive. 3ml or 5ml.  
FBD800, FBD801



**40% Etchant Gel**  
Aqueous Phosphoric Acid. 5ml Syringe.  
FBG800



**Etch Gel Syringe Kit**  
Blue etching gel. 37% Phosphoric acid gel. Thixotropic. 12g syringe and 20 Syringe Tips.  
FBG700



**Bond Application Set**  
1 Holder & 100 Clear Brushes.  
FBX005



**Unolux Dual Bond Resin**  
Dual-cure universal bond for enamel and dentine. Consists of a resin and liquid which are mixed together. Light-cures in 30 seconds/self cures in 5 minutes. 3 x 3ml.  
FBD082



**UnoBond 6**  
6th Generation Bonding Adhesive. A two-step light curable bonding system consisting of a primer and bonding agent. 2 x 5ml.  
FBD810



**UnoBond 7**  
7th Generation Bonding Adhesive Light-Cure Self-Etching Dental Adhesive. A one step self-etching bonding agent. 6ml.  
FBD820



**Bond Brushes**  
Clear or Red. Pack 100.  
FBX003, FBX004



**Disposable Micro Applicator Brushes**  
Fine - Mauve or Yellow.  
Regular - Blue, Green, Orange or Purple. Pack 400.  
FBX201 - FBX206



**Dappens Pot - Glass**  
Clear. Autoclavable to 121°C. Each.  
YMD009



**Dappens Pots - Flexible**  
Eves Type. Small. Autoclavable to 200°C. Set of 3.  
YMD035



**Code Rings**  
Medical grade silicone. Autoclavable. Latex free.  
**4mm**  
Assorted Colours. Box 400.  
GIX110



**Tottle Clips**  
For Hand Disinfectant Rub. Pack 6.  
GXC255



**Bendable Applicator Brushes**  
Flexible heads. Contains 72 red brushes and 72 blue brushes - 144 total. Single use.  
FBX011



**Disposable Dappen Dishes**  
White or Assorted Colours Pack 200.  
YMD050, YMD055



**Mouth Prop**  
Silicone rubber. Latex-free. Each with safety chain. Small Yellow, Medium Blue, Orange Large or Assorted.  
SRU010 - SRU040

**6mm**  
Light Blue, Green, White, Black, Yellow, Red or Orange. Box 50.  
GIX160 - GIX190



# Mixing Pads



## Poly Mixing Pads

Thickness 1.1 mm 100 sheets per pad. Single use. 5cm x 5cm.

CTM101

8cm x 8cm.

CTM102

14cm x 8cm.

CTM103

(Bayer type). For impression materials, etc.

Large 20,4 x 15,3cm

CTB015



## Non-Slip Mixing Pad

12.5cm x 18cm  
25 sheets per pad

CTC051

7cm x 9.5cm

60 sheets per pad

CTM051

7.5cm x 7.5cm

60 sheets per pad

CTP011

15cm x 24cm

35 sheets per pad

CTM052



## Poly Mixing Pad Impregum Type

27 sheets per pad. Single use. 19 x 12.5cm.

CTC050



## Mixing Pads for Dycal, Life

3.5cm x 4.5cm  
40 sheets per pad

CTD021



# Flowables



## Nano-Ceramic Flow

A flowable, light-curing filling material suitable for anterior and posterior teeth based on Nano-Ceramic fillers. A1, A2, A3 or A3.5 Syringes. 1.8g.

FLU421 - FLU424



## Luminos HF

Flowable Light Cure Restorable Composite. Syringes. A1, A2, A3, A3.5, A4, B1, B2, B3, C2, BW, A2O, A3O. 2g.

FLU860 - FLU866



## Unolux BCS Flow

Flowable, light-curing radiopaque glass-ceramic micro-hybrid composite for anterior and posterior teeth. A2, A3 or A3.5 Syringe. 3g.

FLU710, FLU711, FLU712



## Luminos ZF

Zero Flow Composite Flowable Injectable Hybrid Restorative Material. Syringes. A1, A2, A3, A3.5, A4, B2, A1O, A2O, INC. 2g.

FLU870 - FLU878



## Unolux BCS Flow Intra-oral Tips

Also suitable for UnoDent Nano-Ceramic LC Flow.

Pack 100.

FLU723



# Composites & Compomers



## Luminos UN

Universal Light-Cure Restorative Composite. Advanced fluoride-containing nano hybrid composite.

Capsules. A1, A2, A3, A3.5, A4, B1, B2, B3, C2, BW, A2O, A3O, INC. 20 x 0.25g.

FLU830 - FLU840

Syringes. A1, A2, A3, A3.5, A4, B1, B2, B3, C2, BW, A2O, A3O. 4g.

FLU810 - FLU820, FLU841



## Nano-Ceramic LC Syringes

Light-curing filling material based on Nano-Ceramic fillers.

A2 Syringes. 4g.

FLU402

A3 Syringes. 4g.

FLU403

A3.5 Syringes. 4g.

FLU404



## Nano-Ceramic LC Capsules

Light-curing filling material based on Nano-Ceramic fillers.

A2 Capsules. 20 x 0.25g.

FLU412

A3 Capsules. 20 x 0.25g.

FLU413



Best Seller



## Compomer LC Capsules

Universal light-curing compomer restorative material for filling cavities in both anterior and posterior areas.

A2, A3, A3.5. 20 x 0.25g.

FGC002, FGC004, FGC006



## Unolux BCS Syringes

Light-curing glass-ceramic micro-hybrid composite for all cavity classes.

Syringe Kit. 7 x 4g syringes 1 of each shade: A2, A3, A3.5, B2, B3, C2 and UO.

FLU650

Syringes.

A1, A2, A3, A3.5, B2, B3, C2, UO. 4g.

FLU660, FLU661, FLU662, FLU663, FLU665, FLU666, FLU667, FLU669



## Unolux BCS Capsules

Light-curing glass-ceramic micro-hybrid composite for all cavity classes.

Capsule Kit. 40 x 0.25g capsules (10 of each A2, A3 & A3.5, 5 of each B2 & B3).

FLU680

Capsules

A1, A2, A3, A3.5, B2 & B3. 25 x 0.25g.

FLU690, FLU691, FLU692, FLU693, FLU695, FLU696

## Why you love UnoDent

"We have used UnoDent products across our practices for a number of years. Their composite in particular are good quality and we use them exclusively."

Mr Piyush Patel,  
BDS MFDSRCP(S)(Glas)

# Bulk Fill Composites



## Luminos BN

Bulk Fill Nano Hybrid Composite Advanced fluoride-containing nano hybrid composite.

Syringes. Universal, A. 4g.

FLU850, FLU851



## Luminos BF

Bulk Fill Flowable Composite Advanced fluoride-containing flowable composite.

Syringes. Universal, Dentine. 2g.

FLU880, FLU881



# Composite Accessories



## Composite Compu Gun Blue

Autoclavable to 134°C.

FAX661



## Composite Compu Gun Purple

Autoclavable to 134°C

FAX662



## Composite Brush Kit

6 Handles & 400 Brushes.

FBX000



## Composite Spatula

Bag 100.

DSP512



## Composite Compu Gun Light Grey

Autoclavable to 134°C.

FAX660



## Unlux BCS Shade Guide

For colour matching teeth with restoration material.

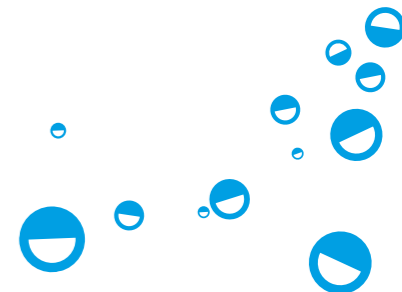
FXS002



## Composite Spatula - Disposable

Pack 10.

DSP520, DSP522





# Glass Ionomers & Temporary Cements



## Aesthetic Restorative

A fast setting, high strength glass ionomer restorative with excellent aesthetics.

### Powder/Liquid Kit

15g Powder and 6ml Liquid.

FGU002

### Powder

A2 - 15g FGU004  
 A3 - 15g FGU006  
 A3.5 - 15g FGU008

### Liquid

6ml FGU012



## Aqua-Fil Introductory Kit

A fast-setting glass ionomer restorative activated by mixing with water.

### Anterior Introductory Kit

1x 10g No.2 - Light Yellow.  
 1 x 10g No.3 - Universal.  
 1 x 10g No.4 - Light Grey.  
 1 x 10g No.5 - Yellow Brown  
 1 x 10g No.7 - Yellow Grey  
 1 x 10ml Tooth Cleanser.  
 Water Dispensing Bottle.  
 Powder Scoop. Shade Guide.  
 FGF601



## Aqua-Fil - 10g Bottle

A fast-setting glass ionomer restorative activated by mixing with water. Adheres directly to enamel, dentine, cementum and set amalgam. 10g Bottle

No.4 - Light Grey FGF648  
 No.5 - Yellow Brown FGF660  
 No.7 - Yellow Grey FGF662  
 No.8 - Brown FGF666



## Aqua-Fil Tooth Cleanser

Removes the salivary pellicle or smear layer on uncut or contaminated tooth surfaces prior to placing a glass ionomer restorative. 10ml.

FGF670



## Aqua-Silver

Silver reinforced glass ionomer. Easy to mix, activated by mixing with water. 10g.

FGF610



## Temporary Luting Cement

A single paste temporary luting cement. For fixing temporary dental crowns or bridges. 3 x 2.8g syringe, 9 x tips.

TNU015



## 3 DE Cement Spatula

Autoclavable. Each.

DSP113, DSP115



## Cavity Temporary Cement

Ready to use, rapid setting temporary filling material.

Tubes 4 x 8g.TEB004

Pot 30g. TEB006



## 8 DE Cement Spatula

Autoclavable. Each.

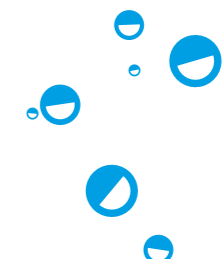
DSP114, DSP116



## 8 DE Cement Spatula - Single Use.

Each.

DIS000, DIS005



# Articulating Paper



## Articulation Paper Thin

Blue/Blue. 0.00125 in / 71 Microns. 12 x 12 sheets.

ITU001

## Articulation Paper Thick

0.005 in / 127 Microns. 12 x 12 sheets.

ITU002



## Articulation Paper Combi

Red/Blue. 0.0028 in / 71 Microns. 12 x 12 sheets.

ITU003

## Articulation Paper Horseshoe

Red/Blue. 0.0035 in / 89 Microns. 6 x 12 sheets.

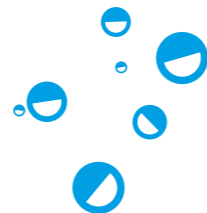
ITU004



## Forceps

Autoclavable Miller. Each.

DFO219



# Amalgam



## Unoloy 44.4

High Copper Non-Gamma Two, Zinc-Free. A mixture of irregular (atomised) and lathe cut particles. Contains: 44.5% Silver, 25.5% Copper, 30% Tin. 500 Caps.

- 1 Spill - Regular    FAF170
- 2 Spill - Regular    FAF171
- 3 Spill - Regular    FAF172

## Unoloy 44.5

High Copper Non-Gamma Two, Zinc-Free. A mixture of irregular (atomised) and lathe cut particles. Contains: 44.5% Silver, 25.5% Copper, 30% Tin. 50 Caps.

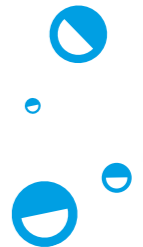
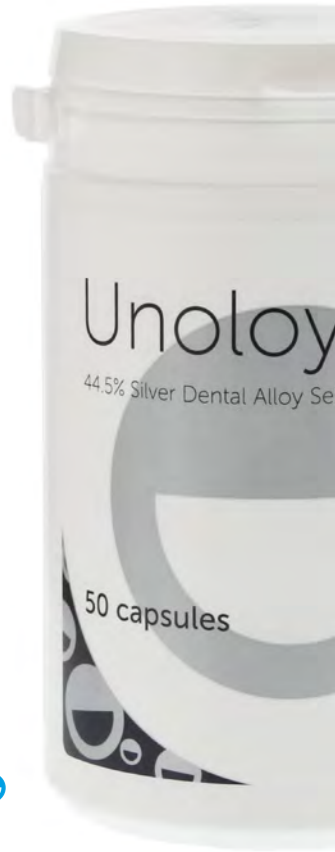
- 1 Spill - Regular    FAF150
- 2 Spill - Regular    FAF151
- 3 Spill - Regular    FAF152

## Unoloy LM80

Reduced mercury dental alloy capsules. Liquid atomised with liquid irregular (atomised) shaped particles. Contains: 40% Silver, 29% Copper, 31% Tin. 50 Caps.

- 1 Spill - Regular    FAF190
- 2 Spill - Regular    FAF191
- 3 Spill - Regular    FAF192

- 1 Spill - Fast        FAF195
- 2 Spill - Fast        FAF196
- 3 Spill - Fast        FAF197



# Amalgam Carriers



**Curved Plastic RA**  
Autoclavable to 134°C. Each.  
FAX350



**Amalgam Gun Spring**  
Autoclavable to 134°C. Each.  
FAX380



**Curved Plastic RA Tips**  
Autoclavable to 134°C.  
Each.  
FAX360



**Straight - Single use**  
Pack 10.  
FAX460



**Amalgam Carrier Straight**  
Autoclavable. Each.  
FAX600



**Straight Plastic**  
Autoclavable to 134°C. Each.  
FAX355



**Stainless Steel Carrier**  
Reg/Large or Reg/Jumbo.  
Autoclavable. Each.  
FAX390, FAX395



**Metal Gun 10a Type**  
Each.  
FAX401



**RA Single-use**  
Pack 10.  
FAX465



**Amalgam Carrier Nozzles - Straight**  
Autoclavable. Each.  
FAX601



**Amalgam Carrier 45°**  
Autoclavable. Each.  
FAX610



**Amalgam Carrier 90°**  
Autoclavable. Each.  
FAX620



**Amalgam Well**  
Light Grey, Blue or Purple  
FAX650 - FAX652



**Amalgam Carrier Nozzles - 45°**  
Autoclavable. Each.  
FAX611



**Amalgam Carrier Nozzles - 90°**  
Autoclavable. Each.  
FAX621



**Retrograde Amalgam Gun RA**  
Each.  
FAX001

